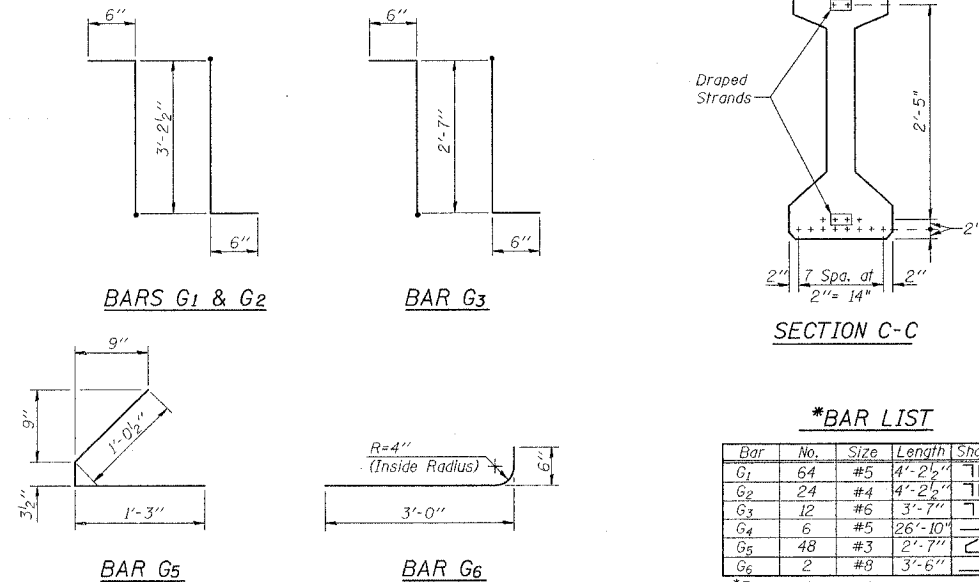
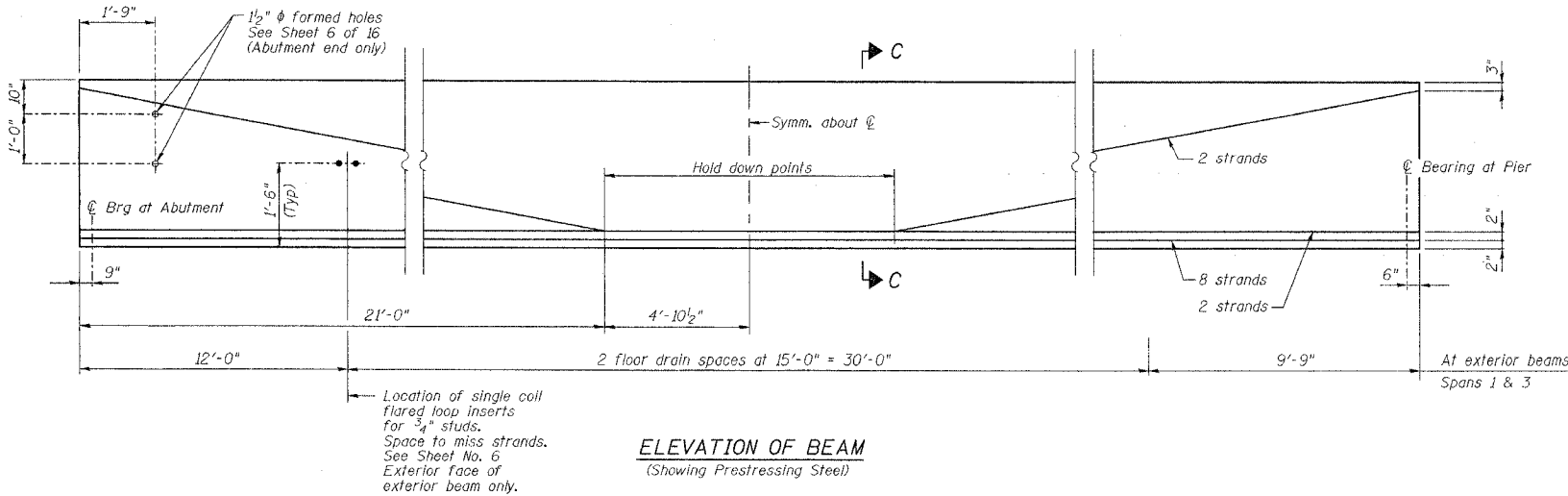
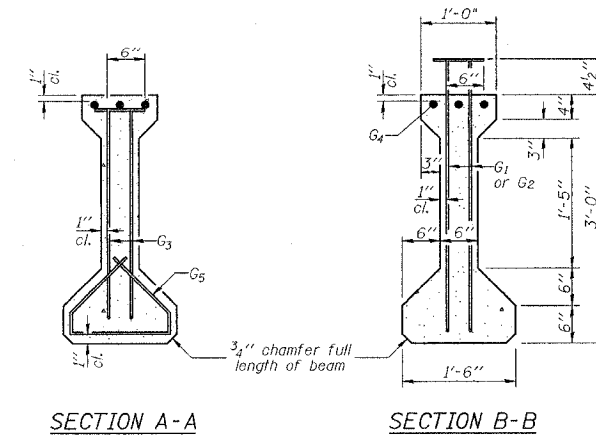
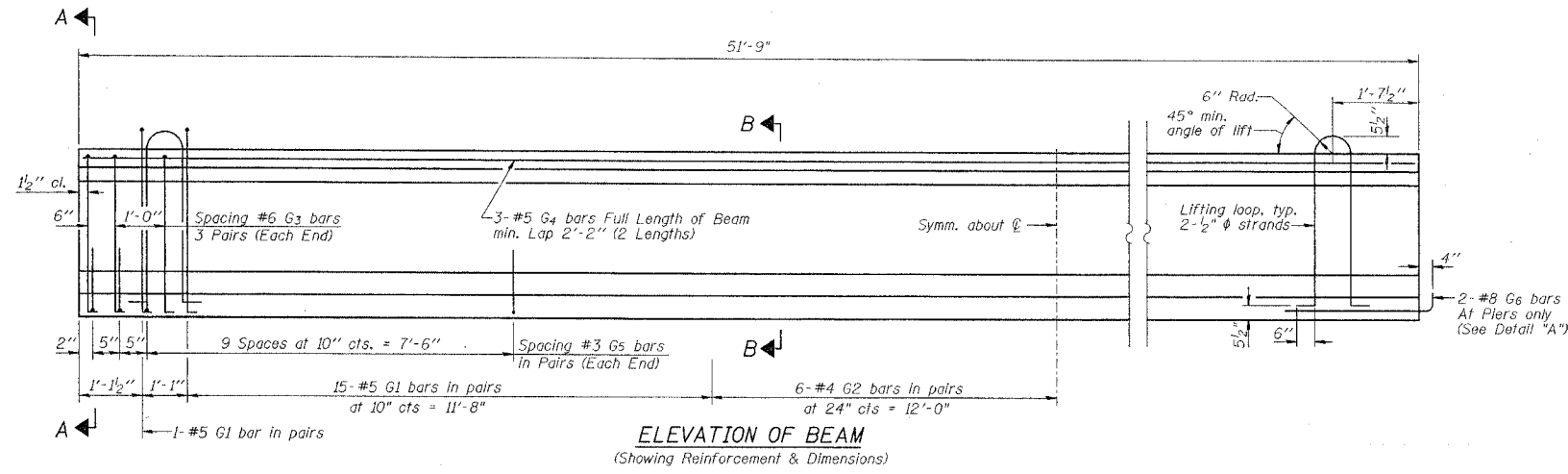


STATE OF ILLINOIS
DEPARTMENT OF TRANSPORTATION

Sheet No. 7
of 16 Sheets

ROUTE NO.	SECTION	COUNTY	TOTAL SHEETS	SHEET NO.
SBI 88	103C-BR	BUREAU	51	18
FED. ROAD DIST. NO.	ILLINOIS	PROJECT		
CONTRACT #64423				



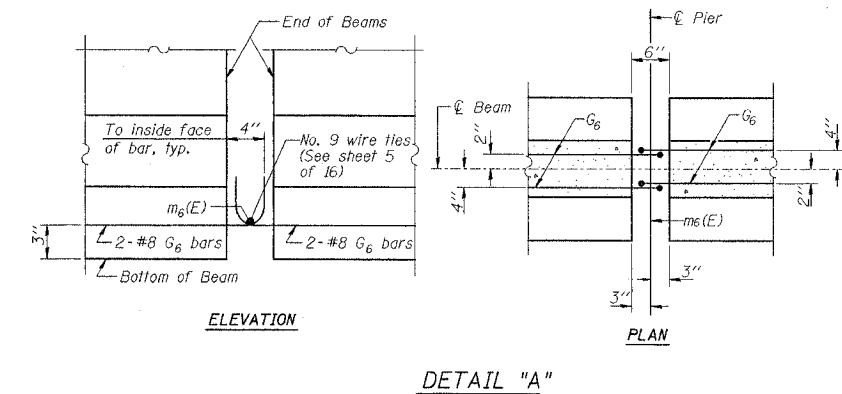
*BAR LIST

Bar	No.	Size	Length	Shape
G1	64	#5	4'-2 1/2"	7L
G2	24	#4	4'-2 1/2"	7L
G3	12	#6	3'-7"	7L
G4	6	#5	26'-10"	
G5	48	#3	2'-7"	
G6	2	#8	3'-6"	

*For one beam only.

BILL OF MATERIAL

Item	Unit	Total
Furnishing and Erecting Precast Prestressed Concrete I-Beams, 36"	Ft.	517.5



1/2" FABRIC BEARING PAD
(10 req'd at piers - Span 1 & Span 3)

NOTES
Inserts for 3/4" threaded dowel rods are to be two strut, coil type for interior I-Beams and single coil, flared loop type for exterior I-Beams. Prestressing steel shall be uncoated high strength, low relaxation 7-wire strand, Grade 270. The nominal diameter shall be 1/2" and the nominal cross-sectional area shall be 0.153 sq. in. Non-prestressing steel shall conform to AASHTO designation M-31 or M-322 Grade 60. Lifting loops shall be 2-1/2" #270 ksl strands, as shown. Required release strength, f'cl, shall be 5000 psi. Reinforcement bars designated (E) shall be epoxy coated. See Sheet No. 2 for moment tables.

NEW BEDFORD ROAD OVER GREEN RIVER
BEAM DETAILS - SPANS 1 & 3

NO.	DATE	INITIALS	REVISIONS
1			
2			
3			
4			
5			
6			
7			
8			
9			
10			
11			
12			

STATE OF ILLINOIS DEPARTMENT OF TRANSPORTATION DIVISION OF HIGHWAYS	DRAWN BY DATE R King 4/04 CHECKED BY DATE CMV 4/04 DATE BY DATE CWC 4/04 BOOK NUMBER
SBI 88 SPUR	SECTION 103C-BR
STA 29+25.34	SN 006-0163
HOMER L. CHASTAIN & ASSOCIATES, LLP CONSULTING ENGINEERS 184-001391	BUREAU COUNTY PROJECT NO. 4858-1 SHEET NO.