

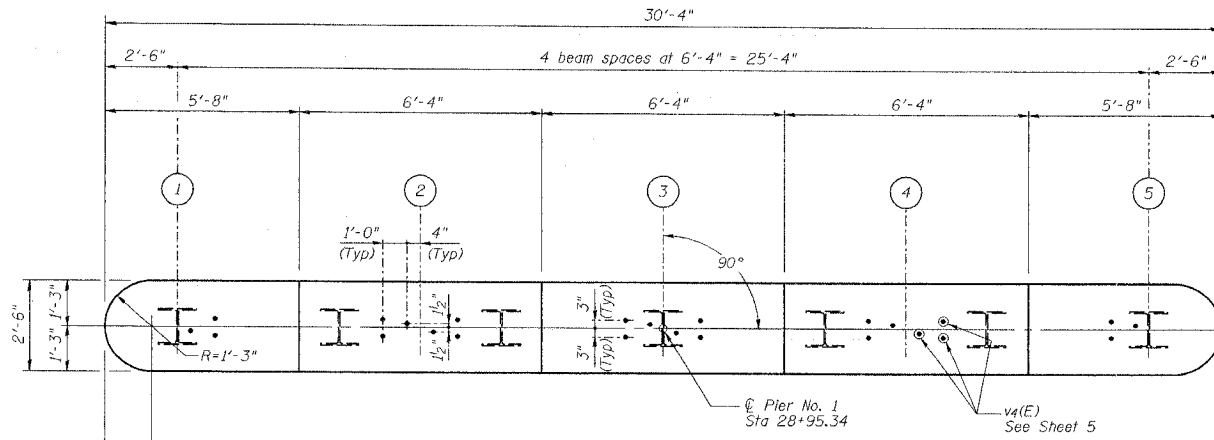
STATE OF ILLINOIS  
DEPARTMENT OF TRANSPORTATION

Sheet No. 12  
of 16 Sheets

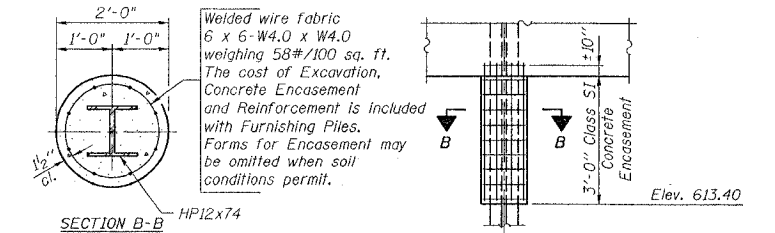
ROUTE NO.	SECTION	COUNTY	TOTAL SHEETS	SHEET NO.
SBI 88	103C-BR	BUREAU	51	23
FEDERAL DISTRICT	ILLINOIS	PROJECT		
CONTRACT #64423				

**PILE DATA**

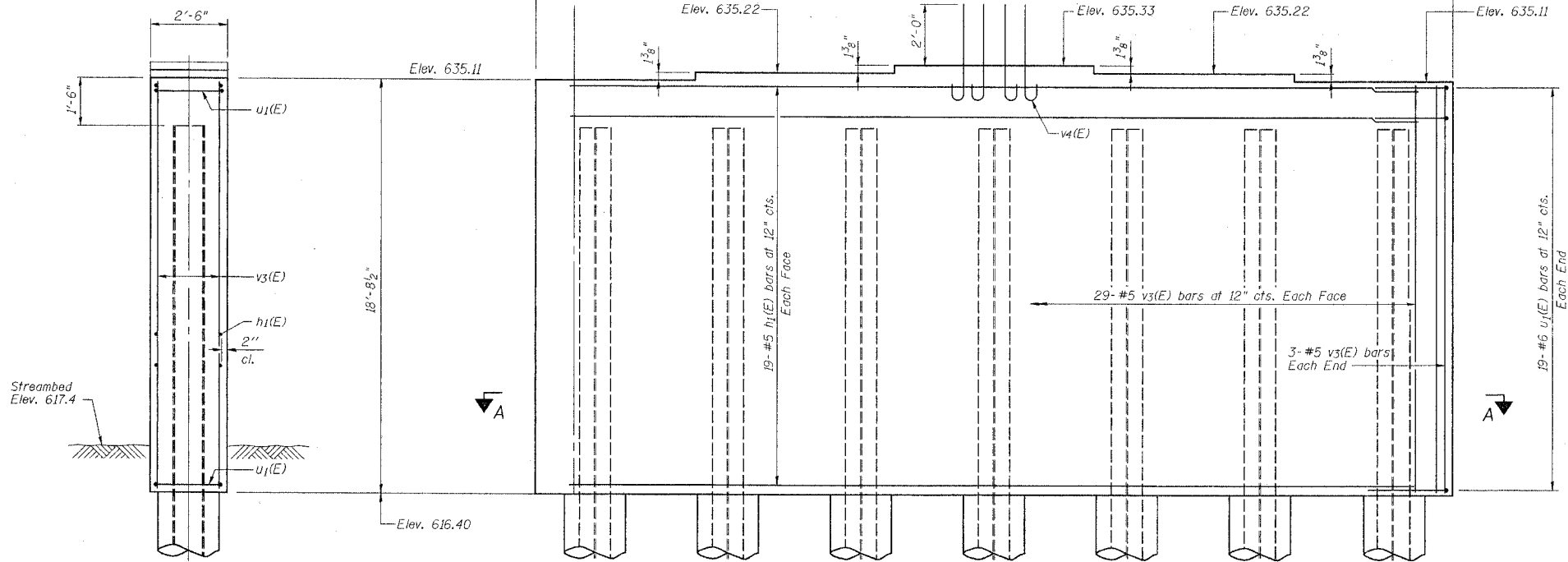
Type: Steel HP12x74  
Capacity: 60 T design driven to 90 T bearing  
Est. Length: 117'  
No. Req'd: 6 plus one test pile



TOP PLAN

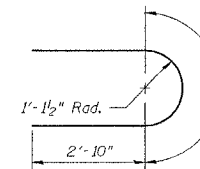


PILE ENCASEMENT DETAIL

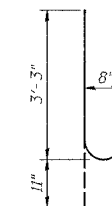


ELEVATION  
(Looking Up Station)

END VIEW



BAR u1(E)



BAR v4(E)

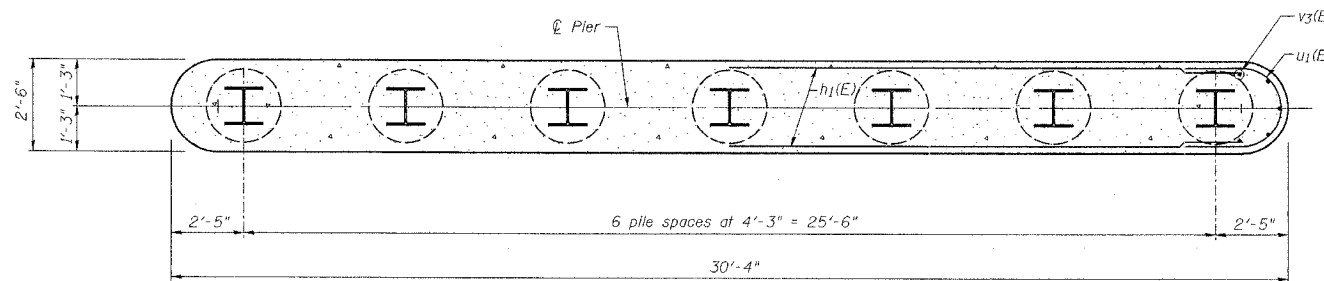
**BILL OF MATERIAL**

Bar	No.	Size	Length	Shape
h1(E)	38	#5	27'-10"	
u1(E)	38	#6	9'-2"	U
v3(E)	64	#5	18'-6"	—
v4(E)	24	#8	4'-2"	U
Structure Excavation		Cu. Yd.	9	
Concrete Structures		Cu. Yd.	51.9	
Reinforcement Bars, Epoxy Coated		Pound	3130	
Furnishing Steel Piles HP12x74		Foot	702	
Driving Steel Piles		Foot	702	
Test Pile Steel HP12x74		Each	1	
Underwater Structure Excavation Protection - Location 1		Each	1	

Reinforcement Bars designated (E) shall be epoxy coated.

**NOTES**

Four steps monolithically with cap.  
Space reinforcement in cap to miss anchor bolts.



SECTION A-A

NEW BEDFORD ROAD OVER GREEN RIVER

PIER NO. 1 DETAILS

REVISIONS	STATE OF ILLINOIS DEPARTMENT OF TRANSPORTATION DIVISION OF HIGHWAYS	DRAWN BY DATE R King 4/04
1		CHECKED BY DATE CMV 4/04
2		DESIGNED BY DATE BWP 4/04
3		BOOK NUMBER
4	SBI 88 SPUR	PROJECT NO. 4858-1
5	SECTION 103C-BR	SHEET NO.
6	SN 006-0163	
7	STA 29+25.34	
8	BUREAU COUNTY	
9	HOMER L. CHASTAIN & ASSOCIATES, LLP	
10	CONSULTING ENGINEERS	
11	184-001397	
12		