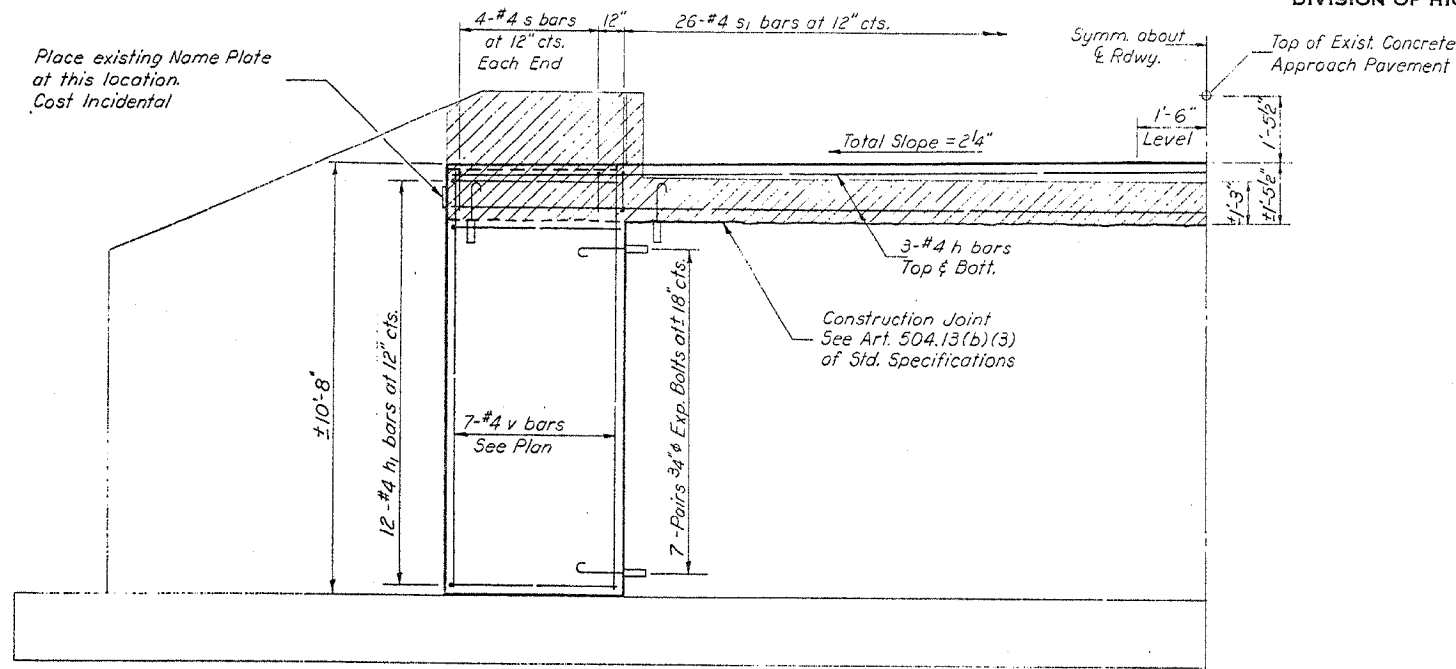


STATE OF ILLINOIS
DEPARTMENT OF PUBLIC WORKS & BUILDINGS
DIVISION OF HIGHWAYS

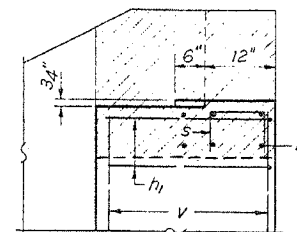
CONTRACT NO. E4B04				
F.A.P. RTE.	SECTION	COUNTY	TOTAL SHEETS	SHEET NO.
301	22BR-1	STEPHENSON	32	20
STA.		TO STA.		
FED. ROAD DIST. NO.		ILLINOIS FED. AID PROJECT		

SHEET NO. 5
5 SHEETS

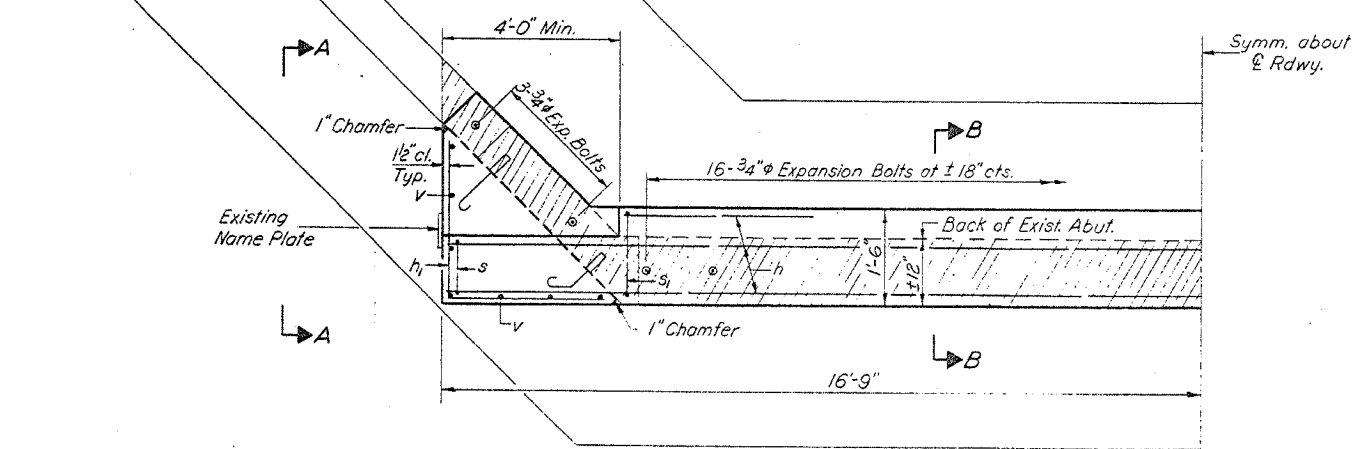
FOR INFORMATION PURPOSES ONLY



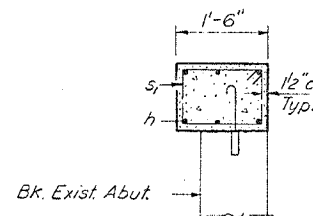
ELEVATION



VIEW A-A



PLAN



SECTION B-B

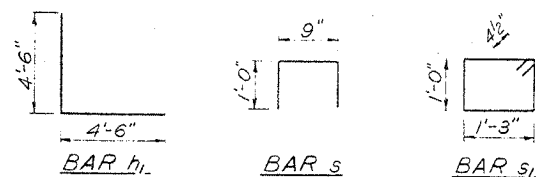
NOTES:
Hatched area indicates Concrete Removal. Reinforcement extending into removed area shall be cleaned and incorporated into the new construction.
Expansion bolts shall be anchored in sound concrete.
All edges shall have standard 3/4 inch chamfers except as noted.

TWO ABUTMENTS
BILL OF MATERIAL

Bar	No.	Size	Length	Shape
h	12	#4	33'-3"	—
h ₁	48	#4	9'-0"	L
s	16	#4	2'-9"	□
s ₁	52	#4	5'-3"	□
v	28	#4	10'-6"	—
Class X Concrete			Cu. Yds.	24.0
Reinforcement Bars			Lbs.	970
Expansion Bolts 3/4"			Each	100
Concrete Removal			Cu. Yds.	5

DESIGNED	James Pence
CHECKED	Jack Armstrong
DRAWN	J.L. Armstrong
CHECKED	JP

EXAMINED	Richard H. Goller	Aug 8 1969
PASSED	Richard H. Goller	
APPROVED	Richard H. Goller	CHIEF HIGHWAY ENGINEER



ABUTMENTS
S.B.I. RT. 5 SEC. 22 BR
STEPHENSON COUNTY
STA. 391 + 45