

F.A.I. RTE.	SECTION	COUNTY	TOTAL SHEETS	SHEET NO.
80	(50-4HBR)I	LaSALLE	4	1

STATE OF ILLINOIS  
DEPARTMENT OF TRANSPORTATION  
DIVISION OF HIGHWAYS

**PROPOSED  
HIGHWAY PLANS**

FAI ROUTE 80 (INTERSTATE 80)  
SECTION (50-4HBR)I

LaSALLE COUNTY

C-93-018-05

**IMPROVING CRASH WALL AT THE MEDIAN PIER  
FOR SN. 050-0216 AT I 80 AND IL 23**



**INDEX OF SHEETS**

1. COVER SHEET
2. GENERAL NOTES, SUMMARY OF QUANTITIES
3. CRASH WALL BARRIER DETAILS AND SCHEDULE
4. AS BUILT PLANS S.N. 050-0216

**HIGHWAY STANDARDS**

- |           |   |
|-----------|---|
| 001001    | AREAS OF REINFORCEMENT BARS   |
| 701101-01 | OFF-ROAD OPERATIONS MULTILANE, 4.5 m (15') TO 600 mm (24") FROM PAVEMENT EDGE |
| 702001-05 | TRAFFIC CONTROL DEVICES   |

FULL SIZE PLANS HAVE BEEN PREPARED USING STANDARD ENGINEERING SCALES. REDUCED SIZED PLANS WILL NOT CONFORM TO STANDARD SCALES. IN MAKING MEASUREMENTS ON REDUCED PLANS, THE ABOVE SCALES MAY BE USED.

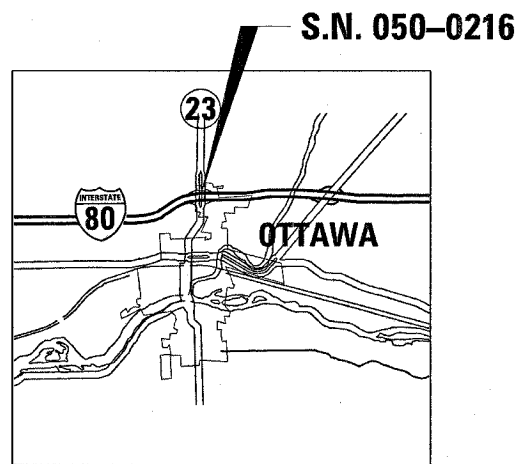
J.U.L.I.E.  
JOINT UTILITY LOCATION INFORMATION FOR EXCAVATION  
1-800-892-0123

MICROFILMED \_\_\_\_\_  
REEL NUMBER \_\_\_\_\_  
AWARDED \_\_\_\_\_  
RESIDENT ENGINEER \_\_\_\_\_  
AS BUILT CHANGES WERE MADE  
ON THE FOLLOWING SHEETS \_\_\_\_\_

DISTRICT 3 NO. (815) 434-6131

PROJECT ENGINEER: DAVE BROVIAK  
UNIT CHIEF: MARK JONES  
TOWNSHIP: DAYTON

CONTRACT NO. 66541



LOCATION MAP  
NOT TO SCALE



FUNCTIONAL CLASSIFICATION - INTERSTATE  
ADT = 28,300  
P.V. = 61.3% S.U. = 6.1% M.U. = 32.6%

STATE OF ILLINOIS  
DEPARTMENT OF TRANSPORTATION  
DIVISION OF HIGHWAYS

SUBMITTED 3/24 2005

*Gregory L. Mounts*  
DEPUTY DIRECTOR OF HIGHWAYS, REGION ENGINEER

May 13, 2005  
*Mike Neri*  
ENGINEER OF DESIGN AND ENVIRONMENT

May 13, 2005  
*Victor Madern*  
DIRECTOR, DIVISION OF HIGHWAYS

**PRINTED BY THE AUTHORITY  
OF THE STATE OF ILLINOIS**

F.A. RTE.	SECTION	COUNTY	TOTAL SHEETS	SHEET NO.
80	150-4HBRI	LOSALE	4	2
STA.		TO STA.		
FED. ROAD DIST. NO. 4		ILLINOIS FED. AID PROJECT		

**SUMMARY OF QUANTITIES** URBAN

CODE NUMBER	ITEM	UNIT	TOTAL QUANTITY (SFTY-2A)
50300225	CONCRETE STRUCTURES	CU YD	6.8
50300501	RUBBED FINISH (MODIFIED)	SQ FT	152
50800205	REINFORCEMENT BARS, EPOXY COATED	LBS	670
67100100	MOBILIZATION	L SUM	1

**GENERAL NOTES**

ANY REFERENCE TO A STANDARD IN THESE PLANS SHALL BE INTERPRETED TO MEAN THE EDITION AS INDICATED BY THE SUBNUMBER LISTED ON THE INDEX OF SHEETS OR THE COPY OF THE STANDARD INCLUDED IN THESE PLANS.

THE TOPS OF ALL CRASH WALLS SHOULD SLOPE TO DRAIN.

STATE OF ILLINOIS  
DEPARTMENT OF TRANSPORTATION  
DISTRICT THREE

PREPARED BY: Thomas Sanchez, P.E.  
DISTRICT STUDIES & PLANS ENGINEER

DATE: December 14, 2004

EXAMINED BY: Albert J. ...  
DISTRICT CONSTRUCTION ENGINEER

Kenneth R. ...  
DISTRICT MATERIALS ENGINEER

James A. ...  
DISTRICT OPERATIONS ENGINEER

REVISIONS	
NAME	DATE

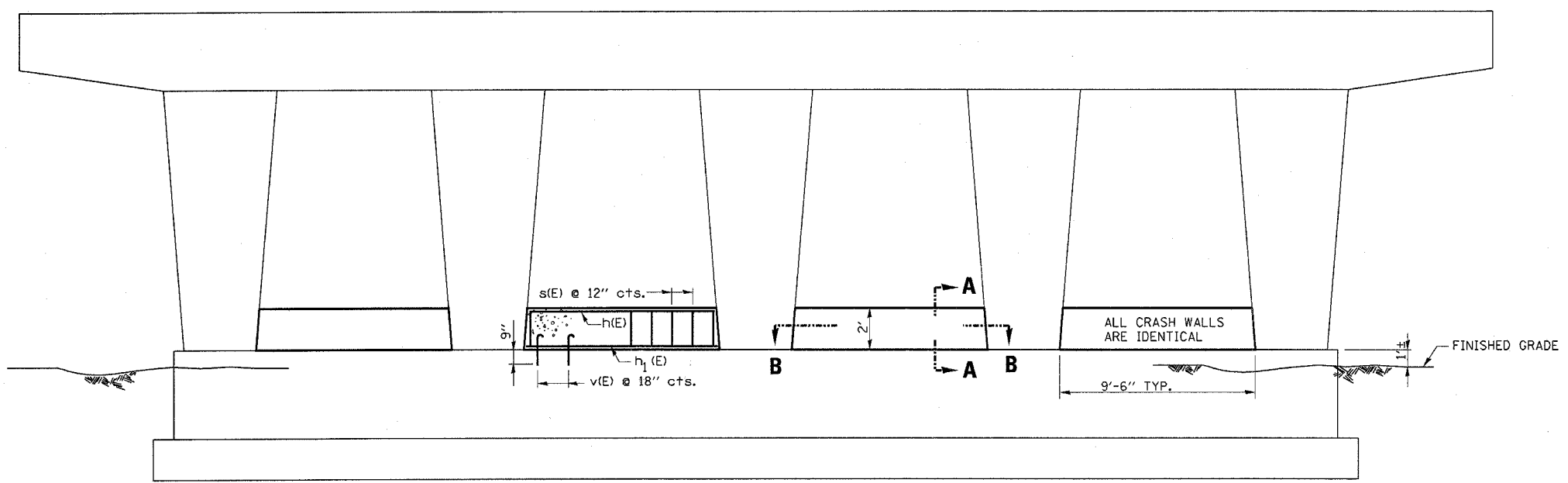
ILLINOIS DEPARTMENT OF TRANSPORTATION

**GENERAL NOTES  
SUMMARY OF QUANTITIES**

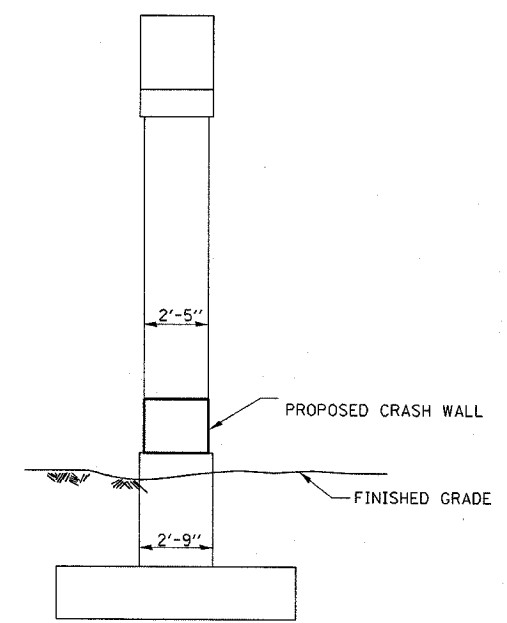
DRAWN BY MWW

CHECKED BY

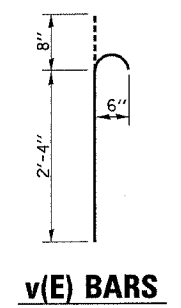
F.A.I. RTE.	SECTION	COUNTY	TOTAL SHEETS	SHEET NO.
80	(50-4HBR)	LOGSALLE	4	3
STA. TO STA.		FED. ROAD DIST. NO. 4 ILLINOIS FED. AID PROJECT		



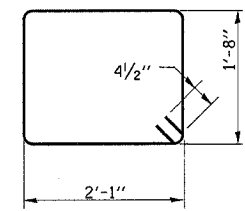
**ELEVATION VIEW**



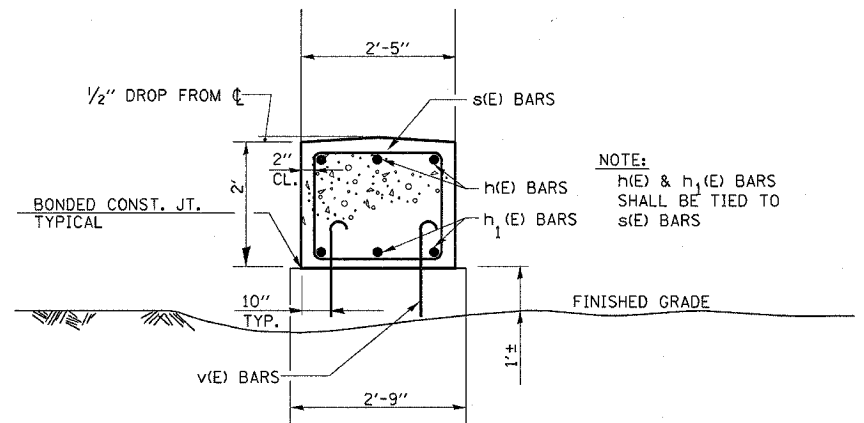
**END VIEW**



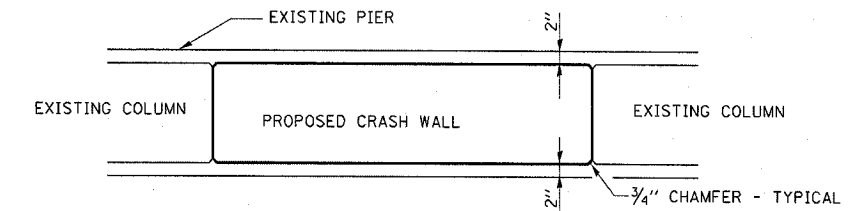
**v(E) BARS**



**s(E) BARS**



**SECTION A-A**



**SECTION B-B**

\* EPOXY GROUTING TO BE DONE IN ACCORDANCE WITH ARTICLE 584 OR THE STANDARD SPECIFICATIONS. COST INCLUDED WITH REINFORCEMENT BARS, EPOXY COATED.

**NOTES**

- ALL EXPOSED EDGES SHALL HAVE A 3/4 " CHAMFER.
- \* V (E) BARS SHALL BE EPOXY GROUTED AND EXTEND A MIN. OF 9" INTO THE EXISTING CONCRETE IN 1" Ø HOLES.
- CONTRACTOR SHOULD EXERCISE CARE NOT TO DAMAGE THE EXISTING REINFORCEMENT WHILE DRILLING HOLES.

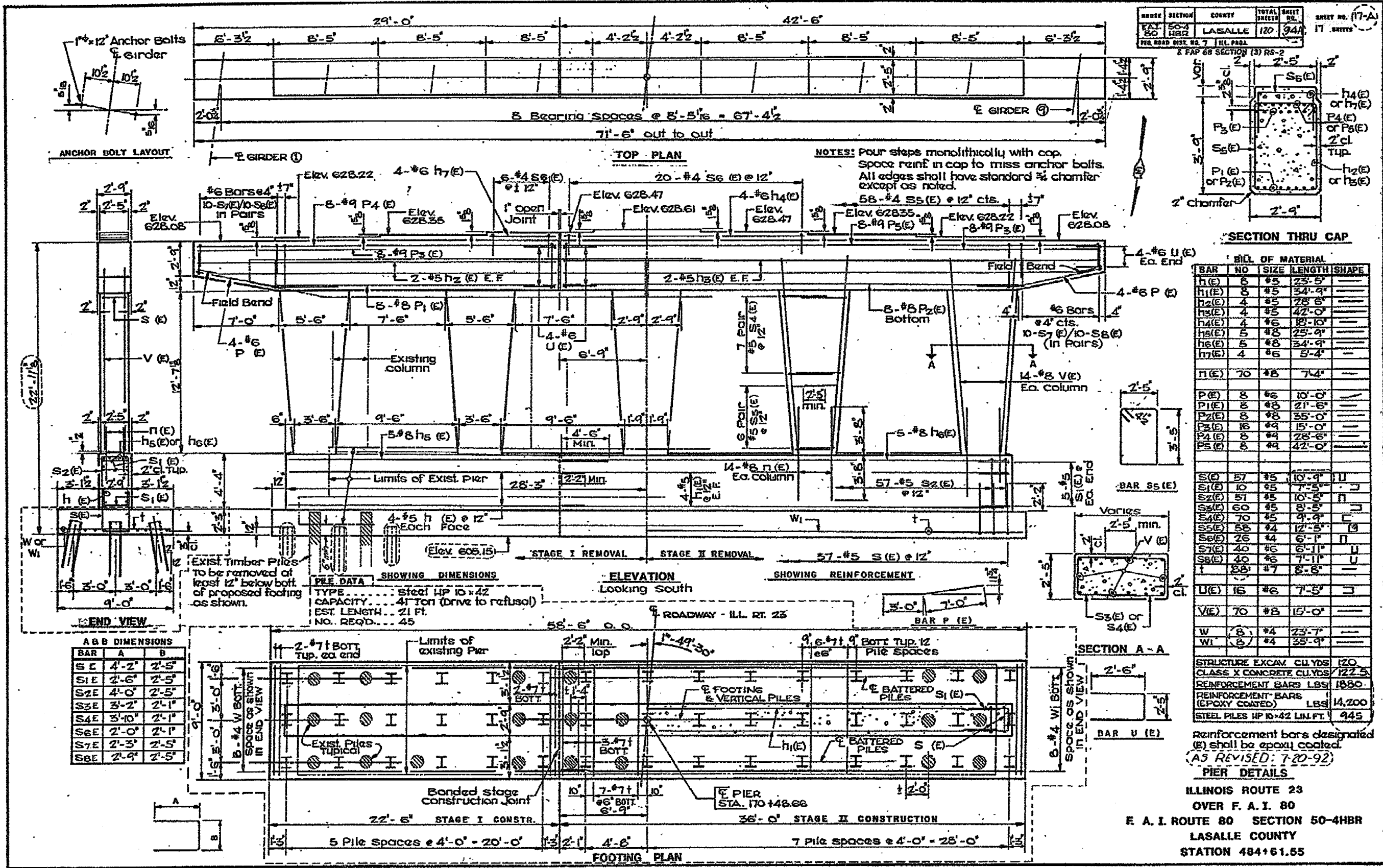
**SCHEDULE OF QUANTITIES**

LOCATION	BAR	NUMBER	SIZE	LENGTH (ft-in)	REINFORCED BARS EPOXY COATED (pounds)	CONCRETE STRUCTURE (cubic yds)
SN 050-0216	v (E)	48	#6	3'-0"	219	
	h (E)	12	#5	8'-10"	112	
	h <sub>1</sub> (E)	12	#5	9'-2"	116	
	s (E)	40	#4	8'-3"	223	
TOTAL					670	6.8

REVISIONS	
NAME	DATE

ILLINOIS DEPARTMENT OF TRANSPORTATION  
**CRASH WALL BARRIER  
 DETAILS AND SCHEDULE  
 SN. 050-0216**

DRAWN BY MWW CHECKED BY



**BILL OF MATERIAL**

BAR NO	SIZE	LENGTH	SHAPE
h(E)	#5	23'-5"	U
h1(E)	#5	34'-9"	U
h2(E)	#5	28'-8"	U
h3(E)	#5	42'-0"	U
h4(E)	#6	18'-10"	U
h5(E)	#8	25'-9"	U
h6(E)	#8	34'-9"	U
h7(E)	#6	8'-4"	U
h(E)	#8	7'-4"	U
P(E)	#6	10'-0"	U
P1(E)	#8	21'-6"	U
P2(E)	#8	35'-0"	U
P3(E)	#9	15'-0"	U
P4(E)	#9	28'-6"	U
P5(E)	#9	42'-0"	U
S(E)	#5	10'-9"	U
S1(E)	#5	7'-5"	U
S2(E)	#5	10'-5"	U
S3(E)	#5	8'-5"	U
S4(E)	#5	9'-9"	U
S5(E)	#4	12'-5"	U
S6(E)	#4	6'-1"	U
S7(E)	#6	6'-11"	U
S8(E)	#6	7'-11"	U
S9(E)	#7	8'-8"	U
U(E)	#6	7'-5"	U
V(E)	#8	15'-0"	U
W	#4	23'-7"	U
WI	#4	35'-9"	U

**STRUCTURE EXCAV. CU YDS** 120  
**CLASS X CONCRETE CU YDS** 122.5  
**REINFORCEMENT BARS LBS** 1880  
**REINFORCEMENT BARS (EPOXY COATED) LBS** 14,200  
**STEEL PILES HP 10 x 42 LIN. FT.** 945

Reinforcement bars designated (E) shall be epoxy coated.  
 (AS REVISED: 7-20-92)  
**PIER DETAILS**  
 ILLINOIS ROUTE 23  
 OVER F. A. I. 80  
 E. A. I. ROUTE 80 SECTION 50-4HBR  
 LASALLE COUNTY  
 STATION 484+61.55

**AS BUILT PLANS FOR INFORMATION ONLY**