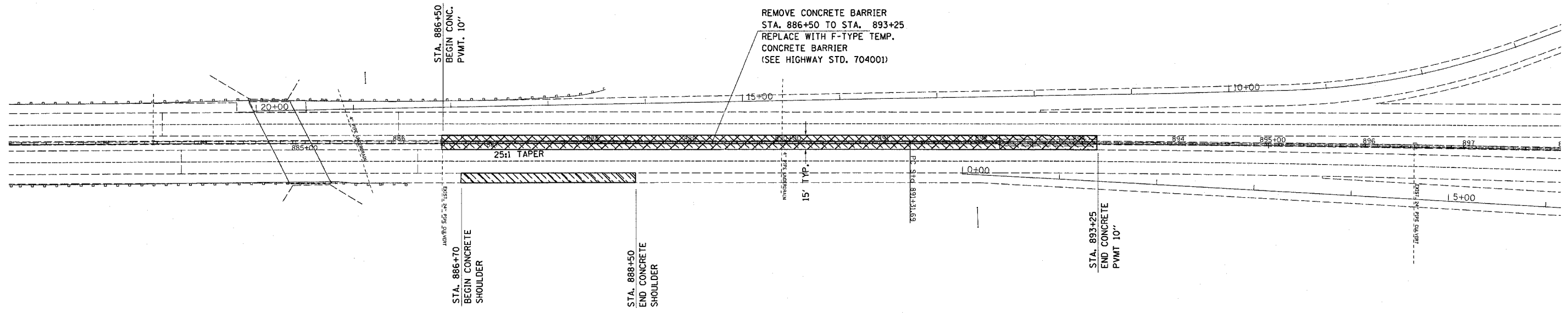
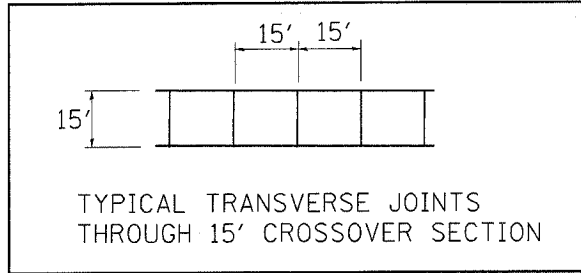
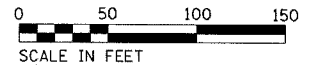
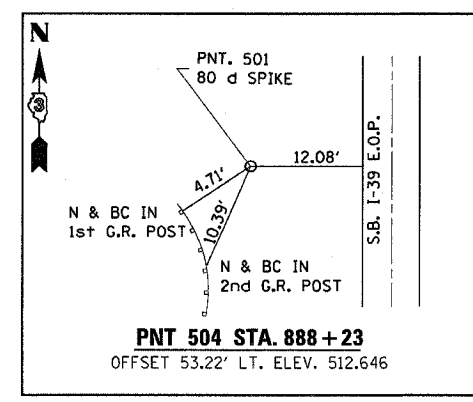


F.A. RTE.	SECTION	COUNTY	TOTAL SHEETS	SHEET NO.
39	(50-4)I	LASALLE	33	13
STA.	TO STA.			
FED. ROAD DIST. NO.	ILLINOIS	FED. AID PROJECT		



- PCC SHOULDER REMOVAL
- BITUMINOUS SHOULDER REMOVAL
- PROPOSED 10" CONCRETE SHOULDER
- CONTINUOUSLY REINFORCED PCC PVMT 10" PCC PVMT 10" (JOINTED)

REVISED
7-27-2005



REVISIONS	
NAME	DATE

ILLINOIS DEPARTMENT OF TRANSPORTATION

CROSSOVER PLAN NORTH

SCALE: VERT. DATE
HORIZ. CHECKED BY

DRAWN BY
CHECKED BY

PLOT DATE: 4/25/2005
 FILE NAME: **FILE**
 PLOT SCALE: **SCALE**
 REFERENCE: **REF**