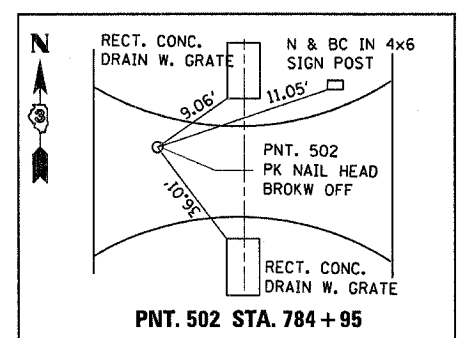
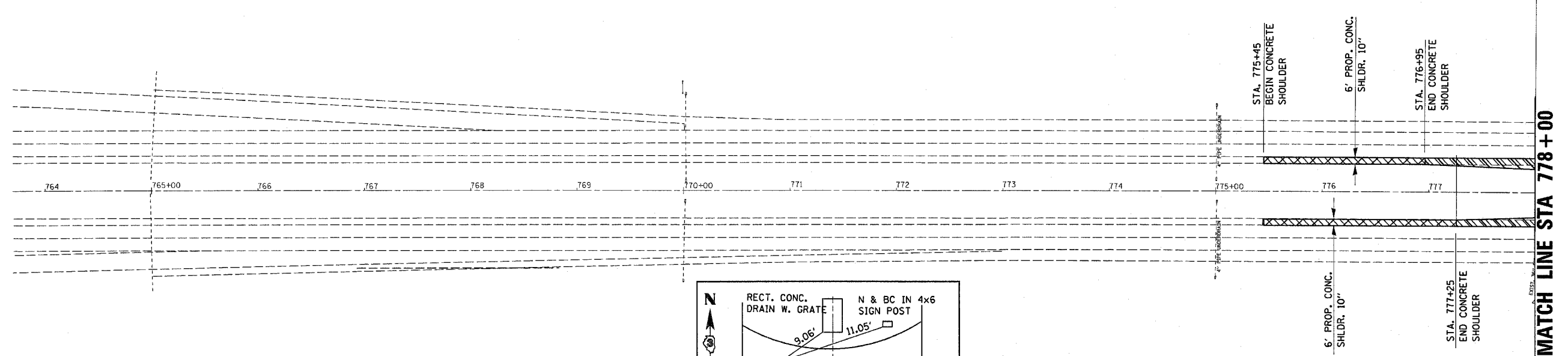
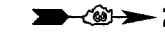
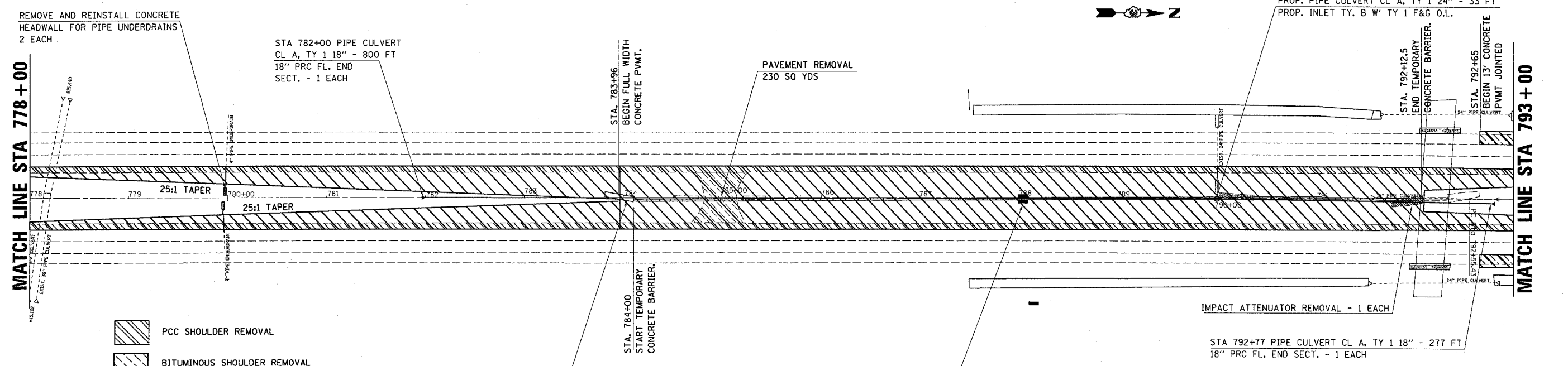
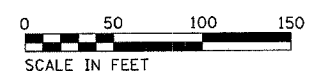


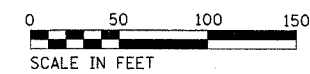
F.A. RTE.	SECTION	COUNTY	TOTAL SHEETS	SHEET NO.
39	(50-40)	LASALLE	33	11
STA.		TO STA.		
FED. ROAD DIST. NO.		ILLINOIS FED. AID PROJECT		



- PCC SHOULDER REMOVAL
- CONTINUOUSLY REINFORCED PCC PVMT 10"
- PCC SHOULDERS 10"



- PCC SHOULDER REMOVAL
- BITUMINOUS SHOULDER REMOVAL
- PROPOSED 10" CONCRETE SHOULDER
- CONTINUOUSLY REINFORCED PCC PVMT 10"



REVISIONS	
NAME	DATE

ILLINOIS DEPARTMENT OF TRANSPORTATION

## CROSSOVER PLAN SOUTH

SCALE: VERT. \_\_\_\_\_  
HORIZ. \_\_\_\_\_

DATE \_\_\_\_\_

DRAWN BY \_\_\_\_\_  
CHECKED BY \_\_\_\_\_

PLOT DATE = 4/22/2005  
 FILE NAME = #FILEL#  
 PLOT SCALE = #SCALE#  
 REFERENCE = #REF#