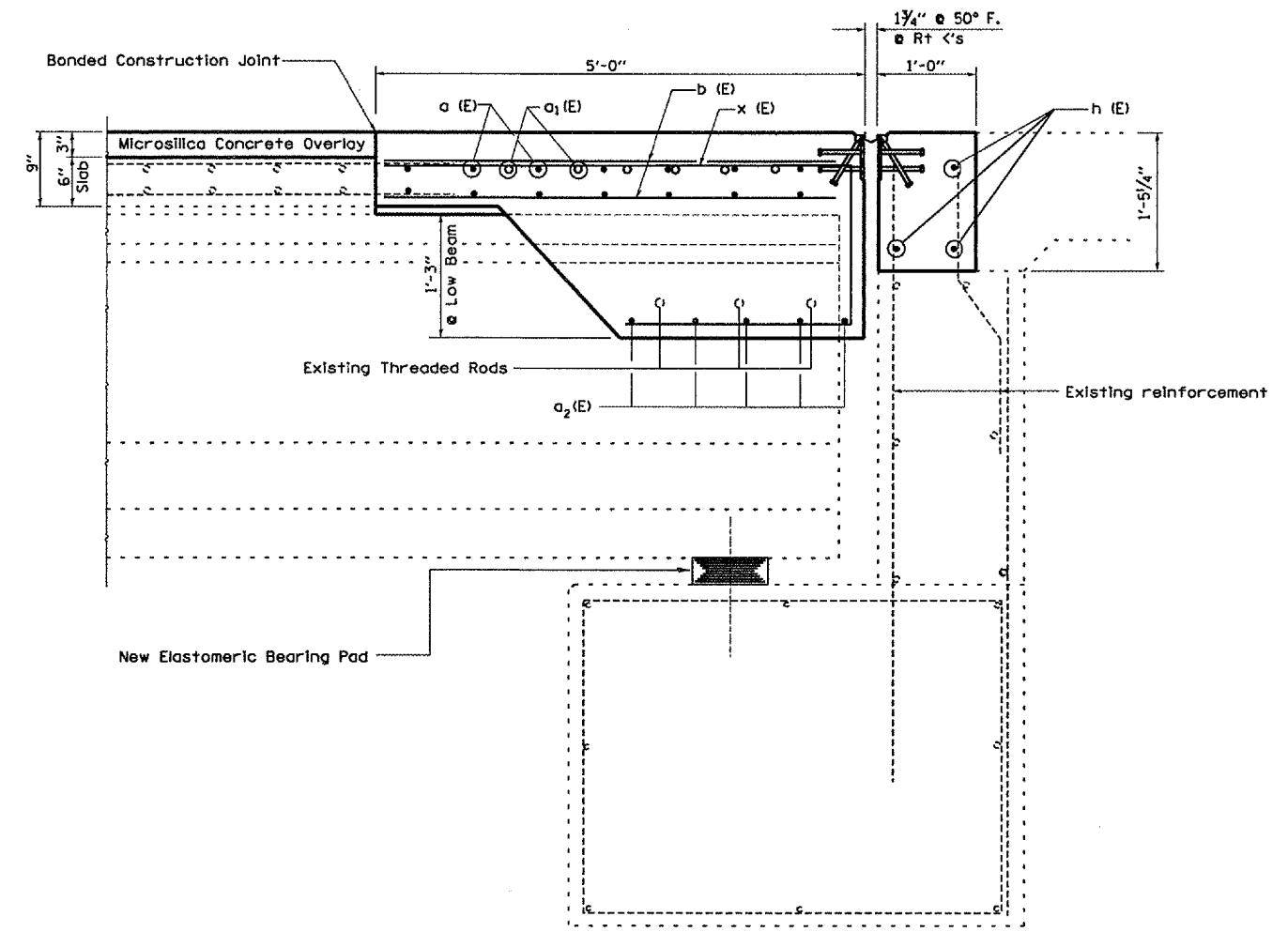
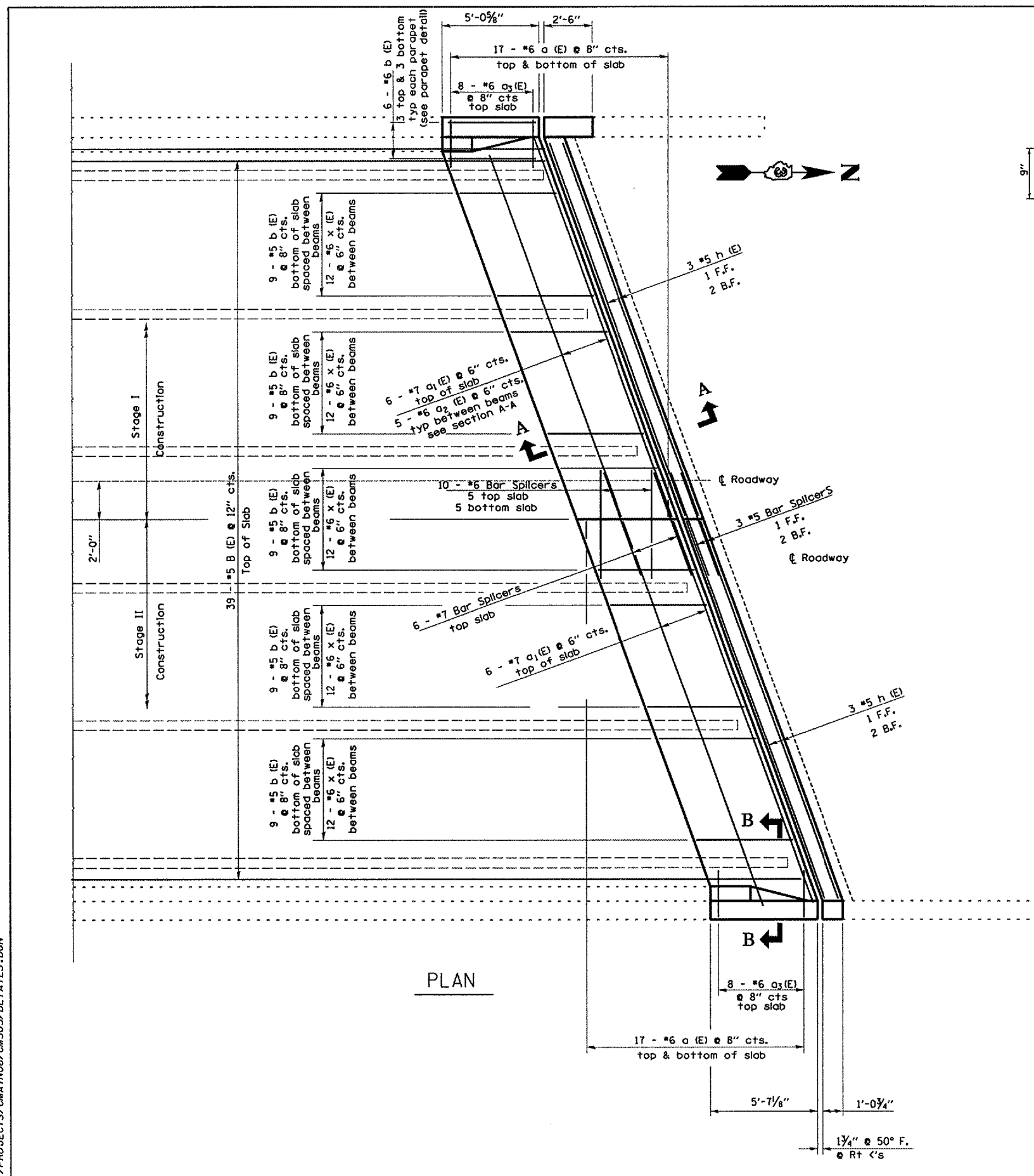


F.A.I. RTE.	SECTION	COUNTY	TOTAL SHEETS	SHEET NO.
412	(50-5B)I-1	LASALLE	29	10
FED. ROAD DIST. NO. ILLINOIS		STATE AID PROJECT		



SUPERSTRUCTURE BILL OF MATERIAL

Bar	No.	Size	Length	Shape
a(E)	34	#6	13'-6"	—
a ₁ (E)	12	#7	22'-0"	—
a ₂ (E)	25	#6	5'-11"	—
a ₃ (E)	16	#6	4'-0"	—
b(E)	96	#5	5'-0"	—
d(E)	12	#5	3'-0"	U
d ₁ (E)	12	#5	3'-1"	U
d ₂ (E)	12	#4	3'-0"	U
d ₃ (E)	12	#4	4'-9"	U
e(E)	6	#4	4'-9"	—
e ₁ (E)	2	#5	4'-9"	—
e ₂ (E)	6	#4	5'-3"	—
e ₃ (E)	2	#5	5'-3"	—
h (E)	6	#5	20'-11"	—
v (E)	8	#6	3'-8"	—
x (E)	60	#6	8'-6"	—
Reinforcement Bars, Epoxy Coated		Pound	3188	
Concrete Superstructure		Cu. Yds.	15.7	

Reinforcement bars designated (E) shall be epoxy coated.

SECTION A-A @ Rt 's

REVISIONS	
NAME	DATE

ILLINOIS DEPARTMENT OF TRANSPORTATION
RECONSTRUCTION - NORTH ABUT. DECK DETAILS
 S.N. 050-0174
 F.A.I. 412 NORTHBOUND OVER C. & N.W. RAILROAD
 SECTION (50-5B)I-1
 STA. 1216+43.45

DATE 04/24/2005

DRAWN BY RW
 CHECKED BY

MARCH 30, 2005 C:\PROJECTS\CMA INOB\CM303\DETAILS.DGN