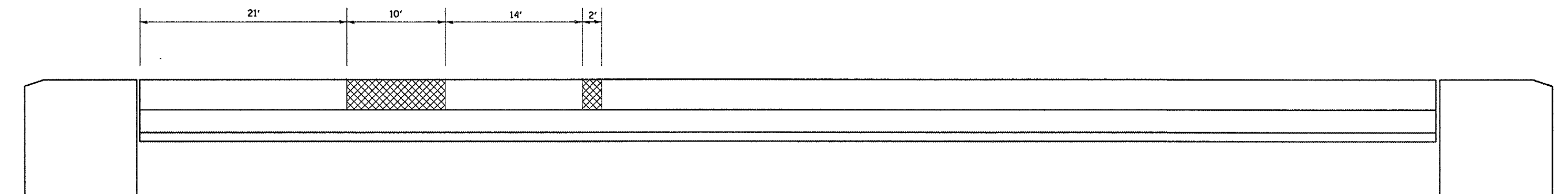


F.A.I. RTE.	SECTION	COUNTY	TOTAL SHEETS	SHEET NO.
412	(50-5B)I-1	LASALLE	29	17
FED. ROAD DIST. NO.		ILLINOIS	STATE AID PROJECT	

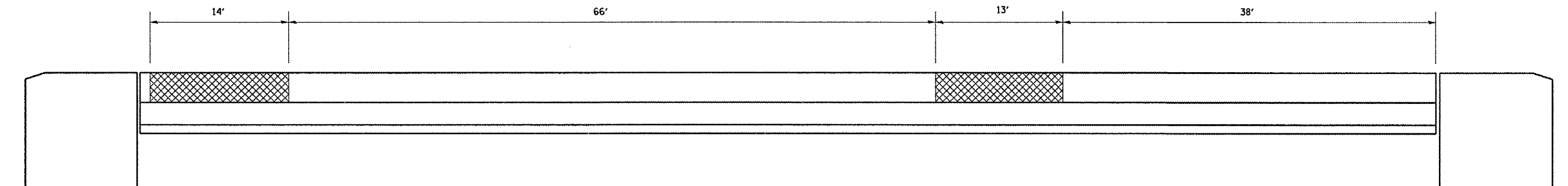


BILL OF MATERIAL WEST PARAPET

Item	Unit	Total
Formed Concrete Repair (Depth ≤ 5")	Sq. Ft.	36

WEST PARAPET ELEVATION
INSIDE FACE

 FORMED CONCRETE REPAIR ≤ 5"



EAST PARAPET ELEVATION
INSIDE FACE

BILL OF MATERIAL EAST PARAPET

Item	Unit	Total
Formed Concrete Repair (Depth ≤ 5")	Sq. Ft.	56

REVISIONS	
NAME	DATE

ILLINOIS DEPARTMENT OF TRANSPORTATION

PARAPET WALL REPAIR

S.N. 050-0174
F.A.I. 412 NORTHBOUND
OVER C. & N.W. RAILROAD
SECTION (50-5B)I-1
STA. 1216 + 43.45

DATE 04/24/2005

DRAWN BY RW
CHECKED BY

MARCH 30, 2005
C:\PROJECTS\CMAI\N06\CM303\DETAILS.DGN