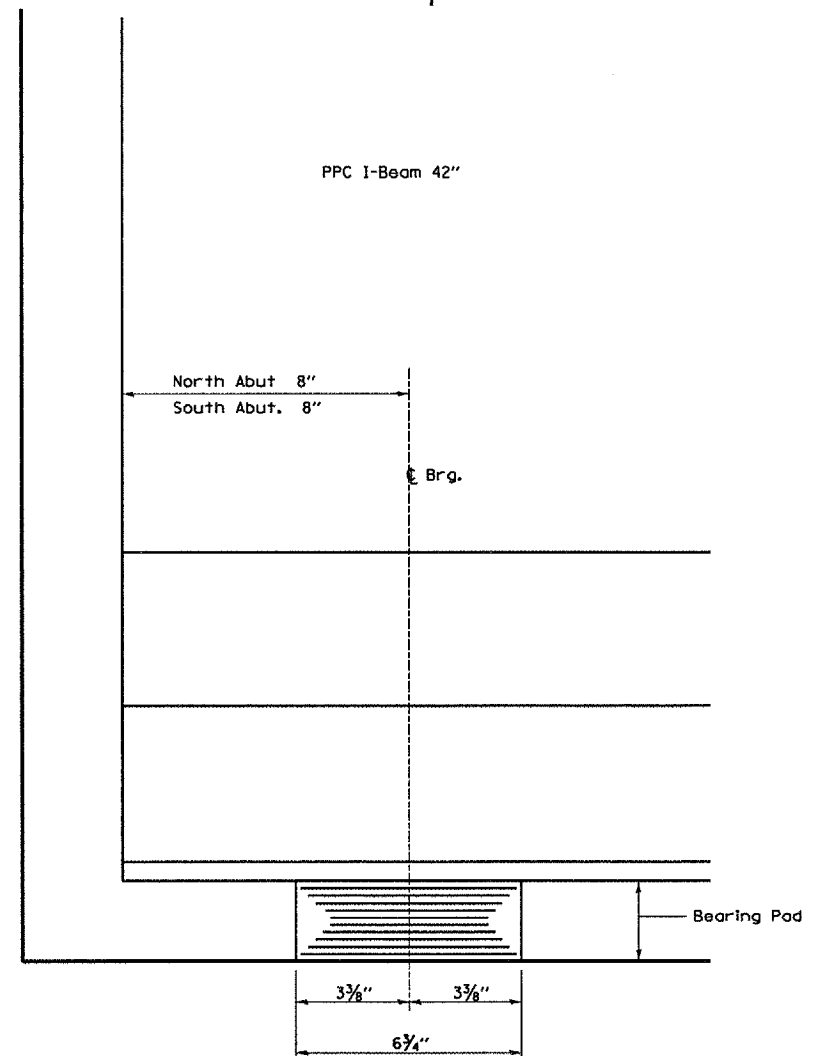


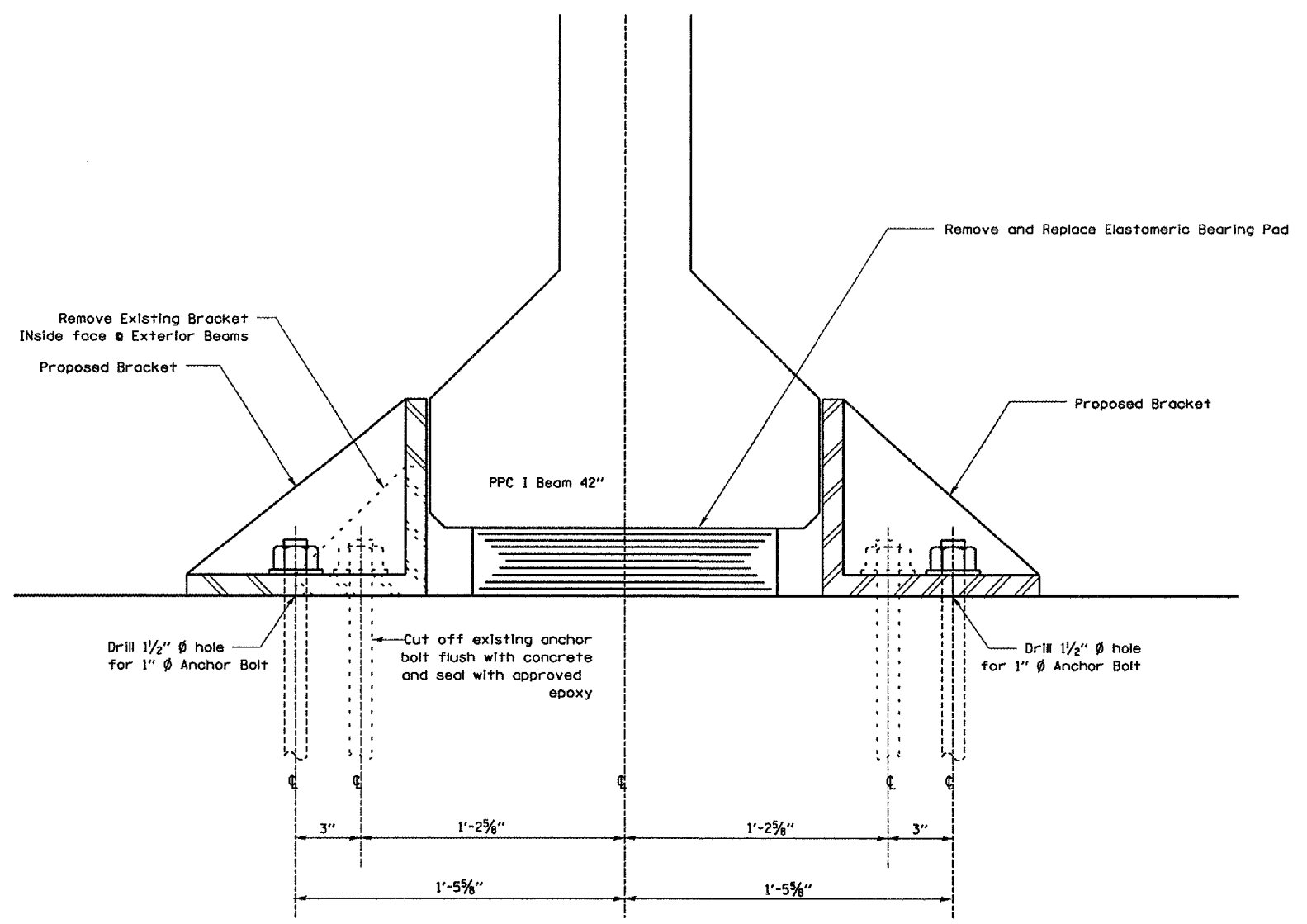
F.A.I. RTE.	SECTION	COUNTY	TOTAL SHEETS	SHEET NO.
412	(50-5B)I	LASALLE	29	19
FED. ROAD DIST. NO. - ILLINOIS		STATE AID PROJECT		

B ←



B ←

ELEVATION AT ABUT.



SECTION B-B

Reaction for Bearing Replacement

- R DL = 37.5 kips
- R SDL = 7.3 kips
- R LL = 38.8 kips
- R Imp = 10.1 kips

Min Jack size: $1.5 \cdot (R DL + R SDL + 1/2(R LL + R Imp)) / 2$ In Tons

NOTE: The minimum jack size assumes no traffic over bearings being replaced plus a 50% safety factor for the Jack.

REVISIONS	
NAME	DATE

ILLINOIS DEPARTMENT OF TRANSPORTATION

BEARING REPLACEMENT DETAILS

F.A.I. 412 SOUTHBOUND
OVER C. & N.W. RAILROAD
SECTION (50-5B)I
STA. 1216 + 43.45

DATE 04/24/2005

DRAWN BY RW
CHECKED BY

MARCH 24, 2005
C:\PROJECTS\CMA\IN06\CM302\DETAILS.DGN