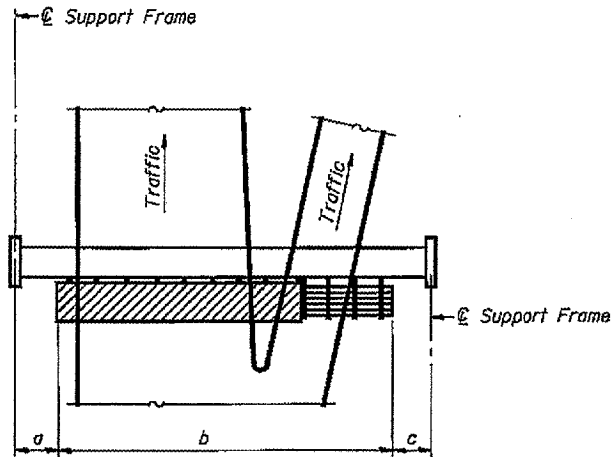


STATE OF ILLINOIS
DEPARTMENT OF TRANSPORTATION

ROUTE NO.	SECTION	COUNTY	SHEET	SHEET NO.
F.A.I. 55	D-6 ITS #1	SANGAMON	47	---
FED. ROAD DIST. NO. 7	ILLINOIS	FED. ROAD DIST. NO.		SHEETS

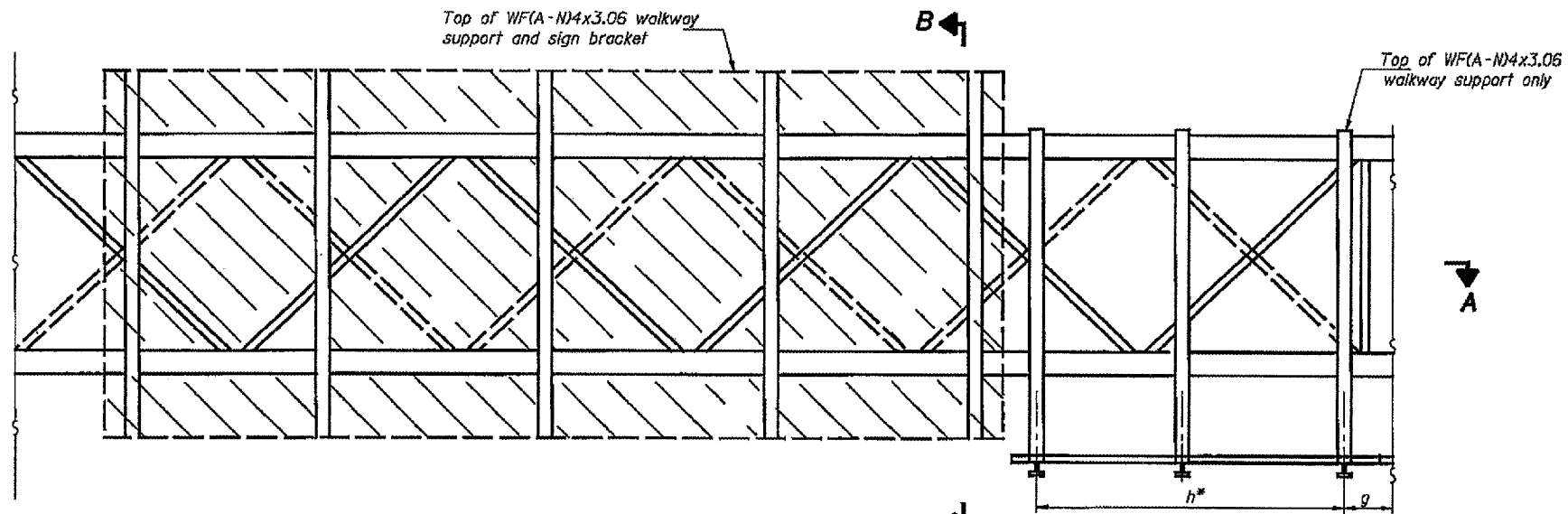


PLAN
WALKWAY AND HANDRAIL SKETCH
(Road plan beneath truss varies)

BRACKET TABLE

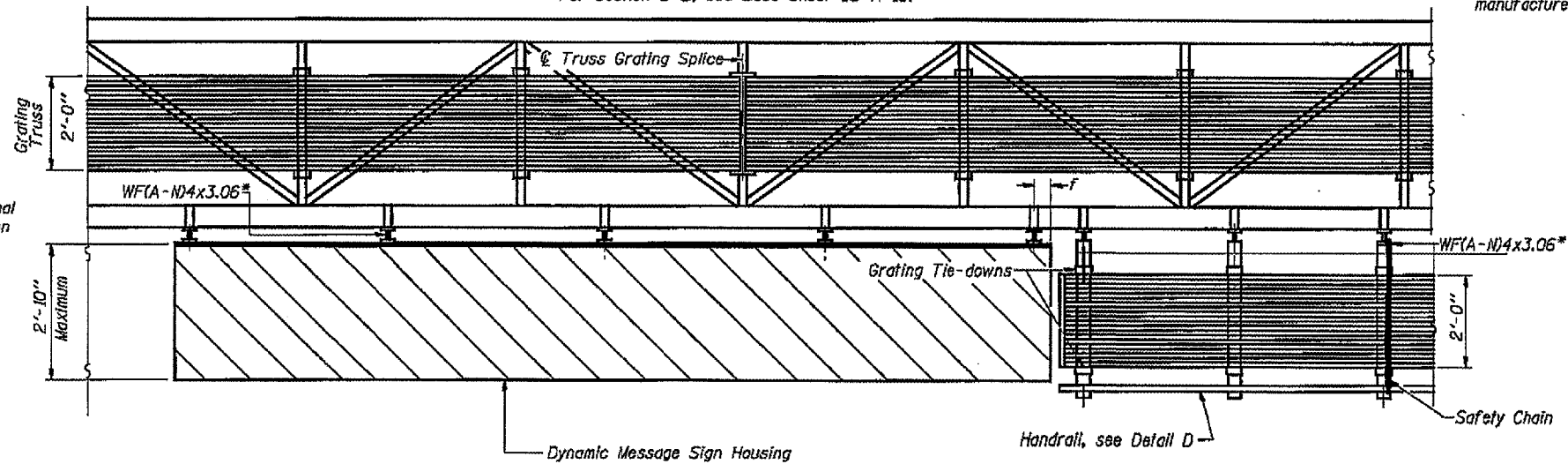
WF(A-N)4x3.06 ASTM B308, Alloy 6061-T6		
Sign Width		Number Brackets Required
Greater Than	Less Than or Equal To	
	10'-0"	2
10'-0"	16'-0"	3
16'-0"	22'-0"	4
22'-0"	28'-0"	5
28'-0"	34'-0"	6

Walkway and Truss Grating width dimensions are nominal and may vary $\pm 1/2$ " based on available standard widths.



TYPICAL FRONT ELEVATION
With handrail omitted for clarity.
For Section B-B, see Base Sheet OS-A-10.

Bracket and grating dimensions are nominal and will vary based on actual DMS cabinet dimensions plus manufacturer's mounting devices.



SECTION A-A

Handrail and walkway shall span a minimum of three brackets between splices and/or gap joints. Place all sign and walkway brackets as close to panel points as practical. Grating and handrail splices placed as needed.

Truss grating to facilitate inspection shall run full length (center to center of support frames) ± 12 " on overhead trusses. Cost of truss grating is included in "Overhead Sign Structure".

Notes: *Space walkway brackets WF(A-N)4x3.06 and sign brackets WF(A-N)4x3.06 for efficiency and within limits shown:

- f = 12" maximum, 4" minimum (End of sign to \odot of nearest bracket)
- g = 12" maximum, 4" minimum (End of walkway grating to \odot of nearest support bracket)
- h = 6'-0" maximum (\odot to \odot sign and/or walkway support brackets, WF(A-N)4x1.79 or WF(A-N)4x3.06)

**If walkway bracket at safety chain location is behind sign, add angle to bracket, see Alternate Safety Chain Attachment on Base Sheet OS-A-11.

For Details T and W, Section B-B and Grating Splice Details, see Base Sheet OS-A-10.
For Details D, F, G and P and Handrail Splice Details, see Base Sheet OS-A-11.

Structure Number	Station	a	b	c	Walkway Grating and Handrail Lengths
6S0841055R86.9	234+00	68'-3"	10'-9"	1'-0"	40'-9"
6S0841055L107.0	202+54	71'-3"	10'-9"	1'-0"	37'-9"

**OVERHEAD SIGN STRUCTURES
ALUMINUM WALKWAY DETAILS**

**F.A.I. 55 (I-55)
SECTION D-6 ITS #1
SANGAMON COUNTY**

DESIGNED	
CHECKED	
DRAWN	
CHECKED	

		19

NUMBER	REVISION	DATE