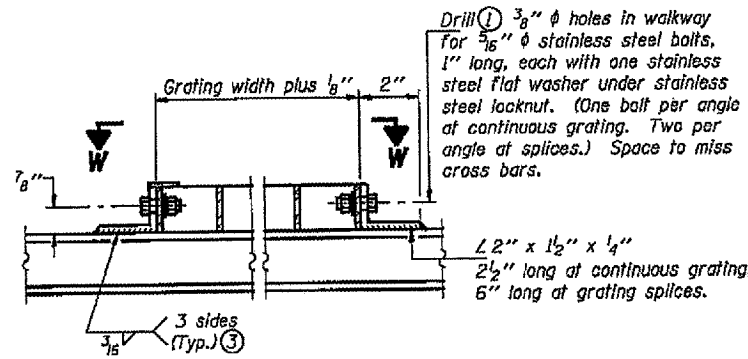
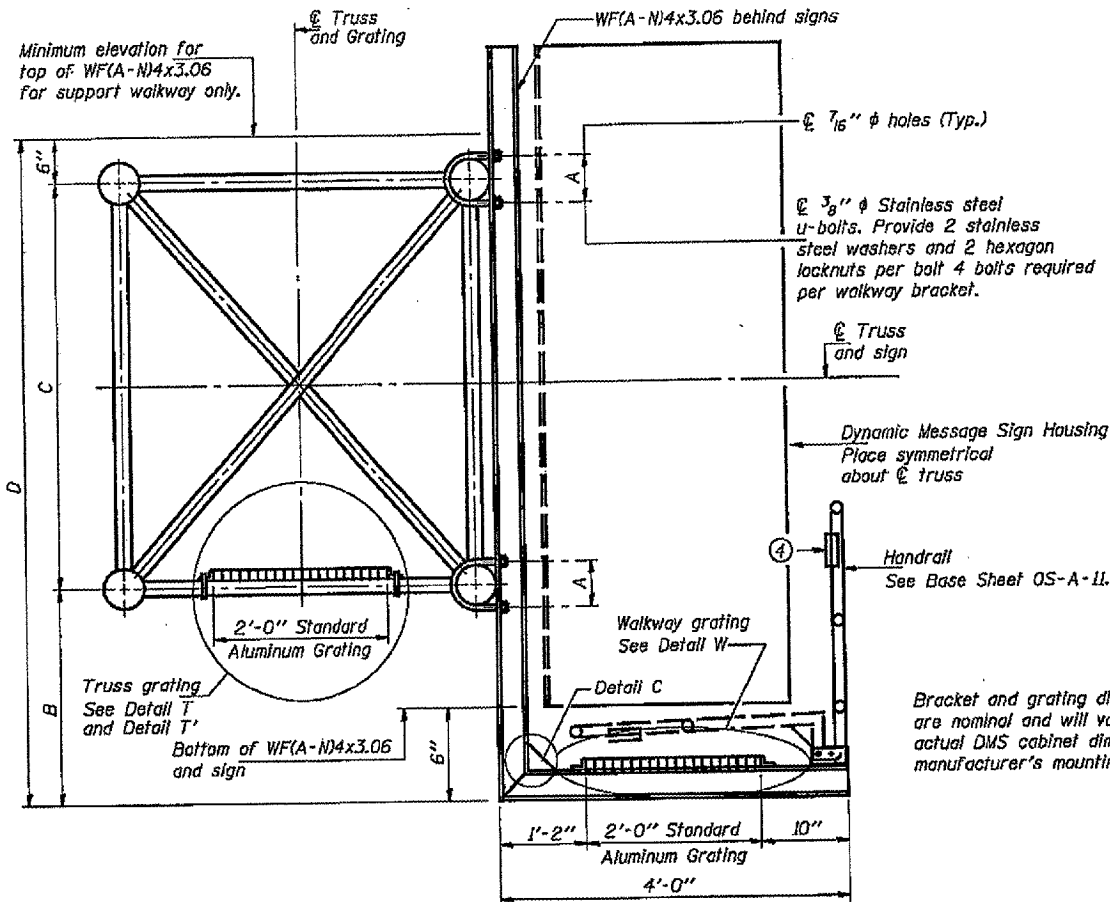
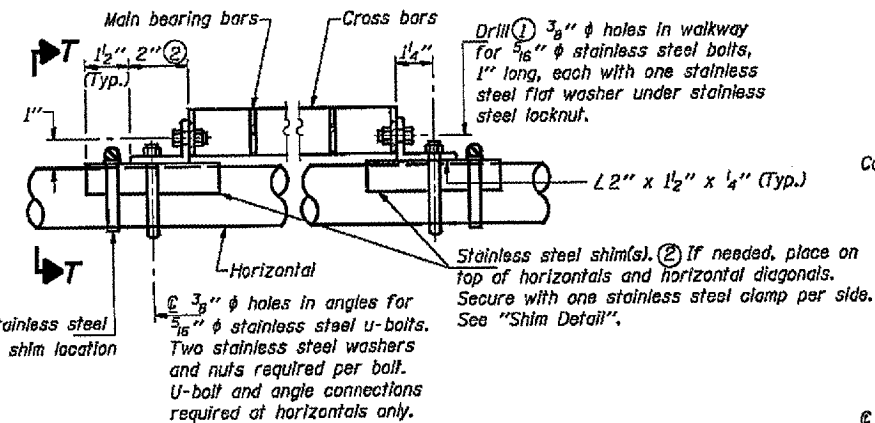


STATE OF ILLINOIS  
DEPARTMENT OF TRANSPORTATION

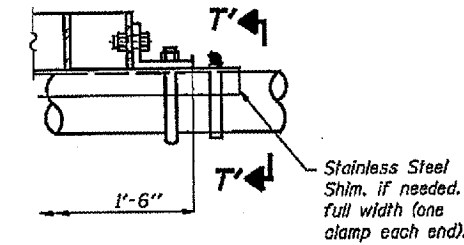
ROUTE NO.	SECTION	COUNTY	DATE	REV.
F.A.I. 55	D-6 ITS #1	SANGAMON		48



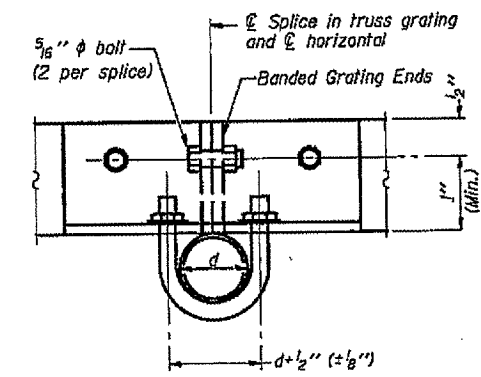
**DETAIL W**  
(Walkway grating)



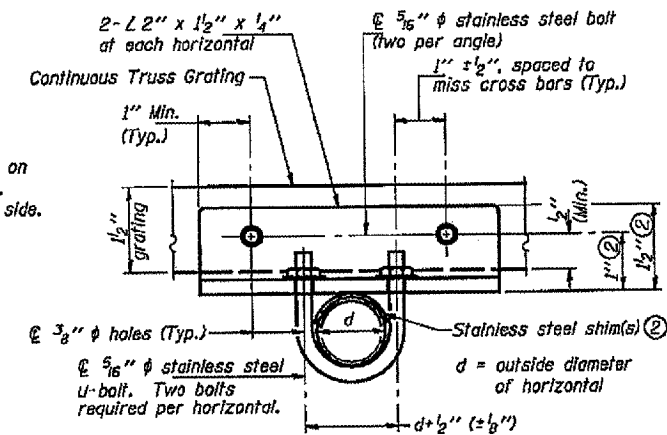
**DETAIL T**  
(Continuous Truss grating)



**DETAIL T'**  
(Truss grating splice)  
Details not shown same as Detail T.  
Alternate materials may be used subject to the Engineer's review and approval.



**SECTION T'-T'**



**SECTION T-T**

**SPECIFICATIONS FOR STANDARD ALUMINUM GRATING**

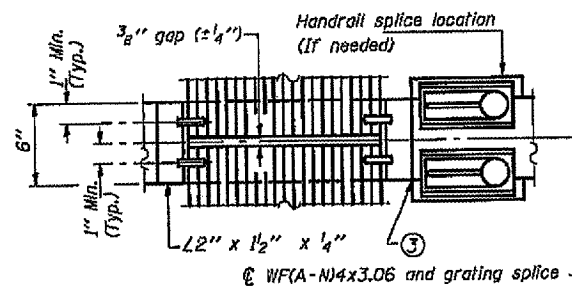
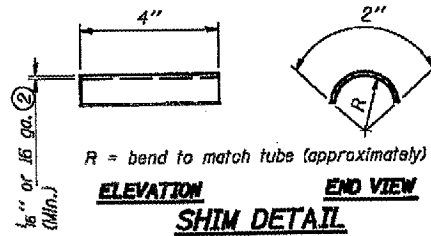
Main Bearing Bars shall be 3/8" x 1 1/2" on 1 3/8" centers and conform to ASTM B211 Alloy 6061-T6.  
Cross bars shall be 3/8" x 1 1/2" on 4" centers and conform to ASTM B221 Alloy 6063-T5 or 6061-T6.

OR

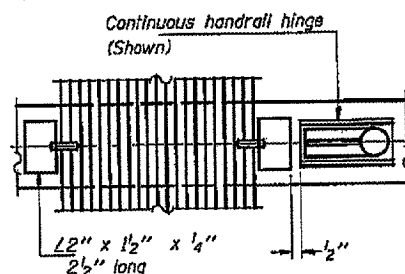
Aluminum Grating with modified "I" sections for main bearing bars shall meet the following requirements:  
Main bars shall conform to ASTM B221 Alloy 6061-T6 and have a minimum section modulus equal to 0.0705 in.<sup>3</sup> per bar, a depth of 1 1/2", spaced on 1 3/8" centers.  
Cross bars shall conform to ASTM B221 Alloy 6063-T5 or T-42 and spaced on 4" centers.

- Drilling holes in grating may be done in shop or field, based on Contractor's preference and subject to accurate alignment.
- Stainless steel shims shall be placed as shown in Detail T if needed to compensate for alignment variations between horizontal and diagonal pipes beyond adjustment provided by angles. Thicker shims may be used subject to shims performing properly.
- If Handrail Joint present, weld angle to WF(A-N)4 and 1/4" extension bars. (See Base Sheet OS-A-11.)
- 1/8" x 1/2" x 2" welded to handrail posts to protect locations that contact grating.

**SECTION B-B**

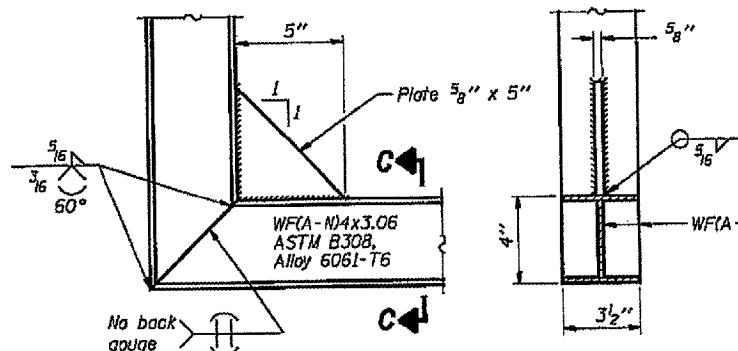


**(AT WALKWAY GRATING SPLICE)**



**(CONTINUOUS WALKWAY GRATING)**

**SECTION C-C**



**DETAIL C**

(See Detail P, Base Sheet OS-A-11.)

Structure Number	Station	A	B	C	D
650841055R86.9	234+00	7 1/8"	1'-3"	7'-0"	8'-9"
650841055L107.0	202+54	7 1/8"	1'-3"	7'-0"	8'-9"

**OVERHEAD SIGN STRUCTURES  
ALUMINUM WALKWAY DETAILS**

F.A.I. 55 (I-55)  
SECTION D-6 ITS #1  
SANGAMON COUNTY

DESIGNED	EXAMINED
CHECKED	ENGINEER OF STRUCTURAL SERVICES
DRAWN	ENGINEER OF BRIDGES AND STRUCTURES
CHECKED	

NUMBER	REVISION	DATE