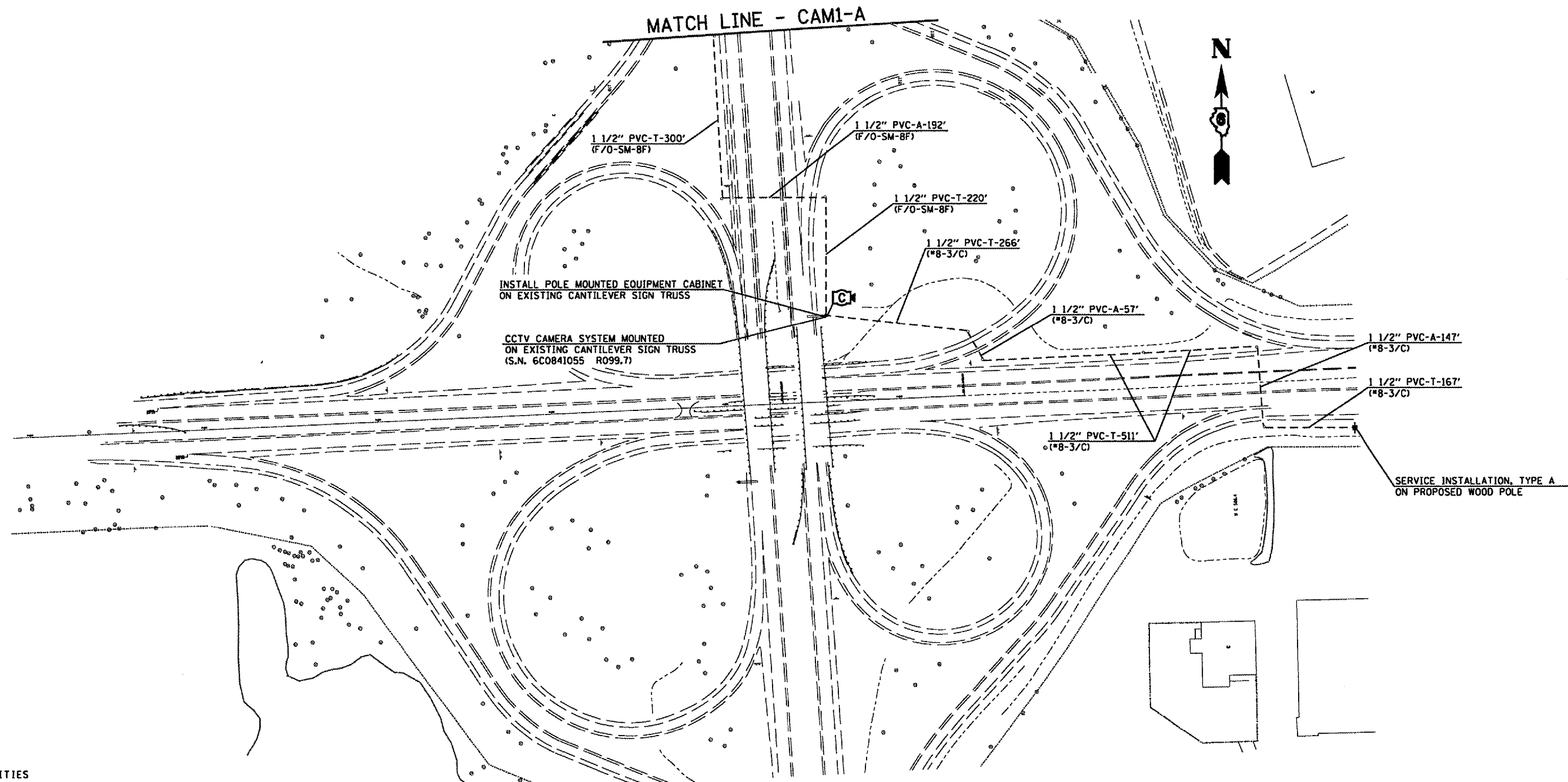


F.A. RTE.	SECTION	COUNTY	TOTAL SHEETS	SHEET NO.
D-6	ITS #1	SANGAMON		5
STA.		TO STA.		
FED. ROAD DIST. NO.		ILLINOIS FED. AID PROJECT		



CAMERA 1 QUANTITIES

QUANTITY	UNIT	ITEM
1	EACH	SERVICE INSTALLATION, TYPE A
1	EACH	WOOD POLE, 25 FT., CLASS 4
1464.0	FOOT	CONDUIT IN TRENCH, 1 1/2" DIA., PVC
396.0	FOOT	CONDUIT, AUGERED, 1 1/2" DIA., PVC
15.0	FOOT	CONDUIT ATTACHED TO STRUCTURE, 2" DIA., GALVANIZED STEEL
8	EACH	JUNCTION BOX (SPECIAL)
1464.0	FOOT	TRENCH AND BACKFILL FOR ELECTRICAL WORK
721.5	FOOT	FIBER OPTIC CABLE IN CONDUIT, NO 62.5/125, 8F
1205.5	FOOT	ELECTRIC CABLE IN CONDUIT, SERVICE, NO. 8 3/C

REVISIONS	
NAME	DATE

ILLINOIS DEPARTMENT OF TRANSPORTATION
CAM 1 PLAN VIEW
 D-6 ITS
 SANGAMON COUNTY
 SCALE: VERT. 1" = 100'
 HORIZ. DATE MAY 2005
 DRAWN BY KDA
 CHECKED BY

PLOT DATE * DDATERS
 FILE NAME * #FILES#
 PLOT SCALE * #SCKLES#
 USER NAME * #USERN#