

F.A.P. RTE.	SECTION	COUNTY	TOTAL SHEETS	SHEET NO.
317	3RS-6,4RS-7	ADAMS	6	1

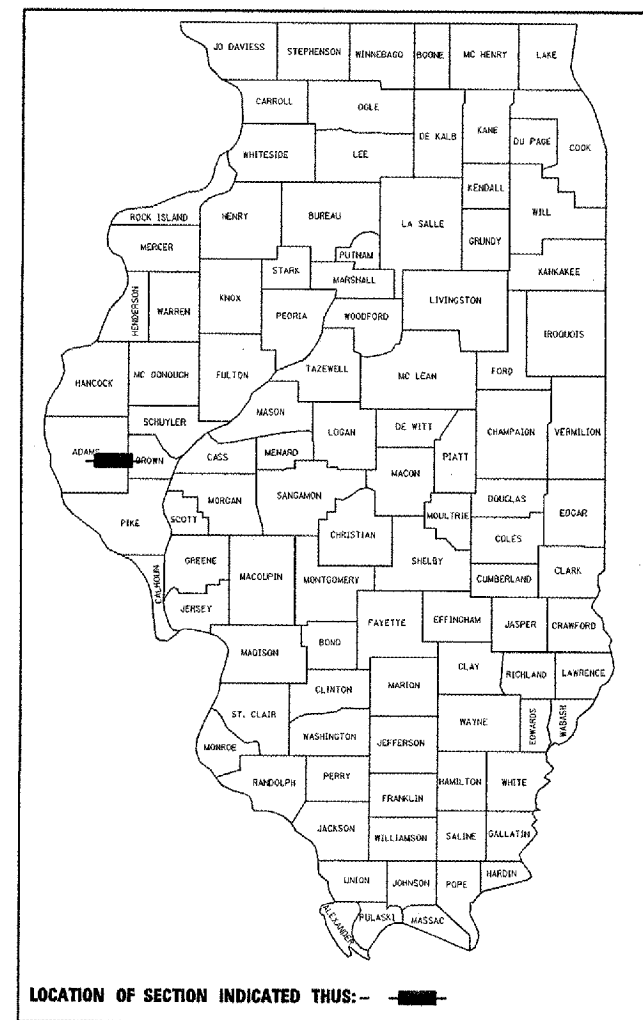
STATE OF ILLINOIS
DEPARTMENT OF TRANSPORTATION
DIVISION OF HIGHWAYS

PROPOSED
HIGHWAY PLANS

FAP ROUTE 317 (US 24)
 SECTION 3RS-6,4RS-7
 ADAMS COUNTY
 C-96-512-06

FOR INDEX OF SHEETS, SEE SHEET NO. 2

D96-532-05

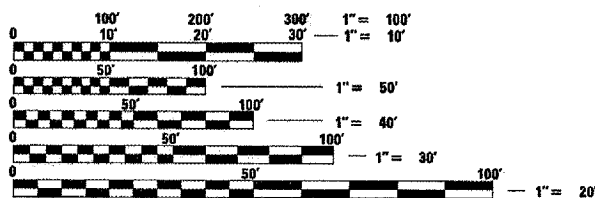


ROADWAY CLASSIFICATION - MINOR ARTERIAL
 FAP ROUTE 317 (US 24)
 CURRENT ADT 3800 (2005)
 CRS 6.0 (2001)

PROJECT DESCRIPTION:

FROM THE EAST CITY LIMITS OF CAMP POINT TO THE INTERSECTION IL 94. PATCHING, MILLING, AND RESURFACING 2 1/4", WITH PAVEMENT STRIPING AND AGGREGATE SHOULDERS.

PROJECT ENGINEER: JOHN BARANZELLI (217)782-5503
 SQUAD LEADER: MARCUS BRUCE (217)785-5336

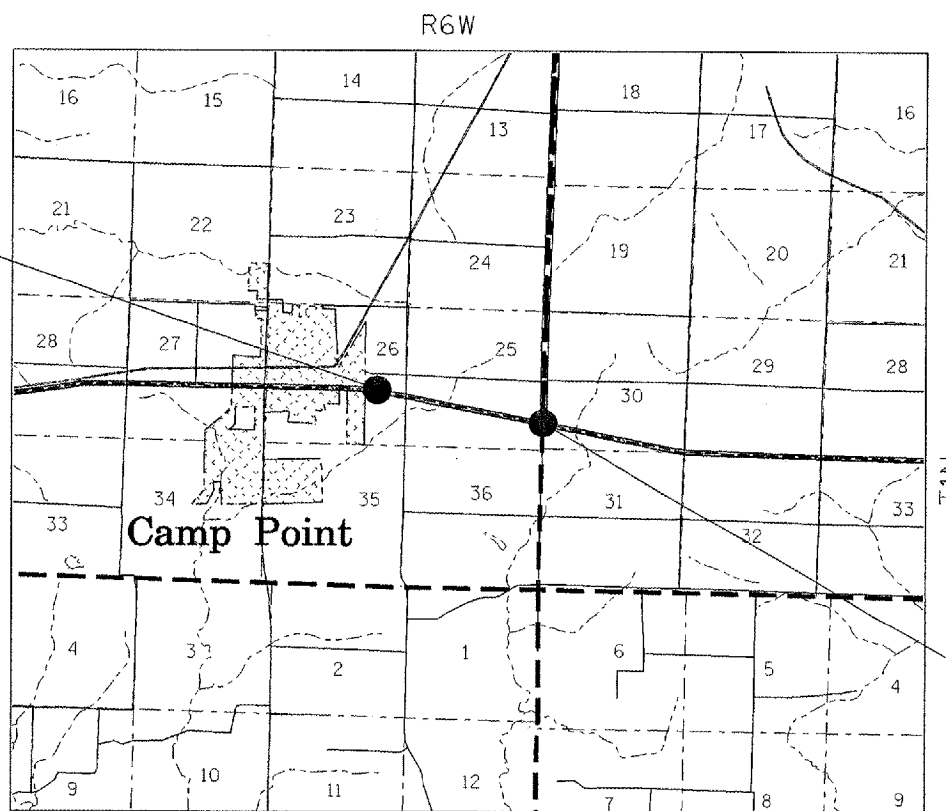


FULL SIZE PLANS HAVE BEEN PREPARED USING STANDARD ENGINEERING SCALES. REDUCED SIZED PLANS WILL NOT CONFORM TO STANDARD SCALES. IN MAKING MEASUREMENTS ON REDUCED PLANS, THE ABOVE SCALES MAY BE USED.

J.U.L.I.E.
 JOINT UTILITY LOCATION INFORMATION FOR EXCAVATION
 1-800-892-0123

CONTRACT NO. 72A05

BEGIN SECTION
 1336+15.00



END SECTION
 1255+85.00

TOTAL LENGTH OF PROJECT - 1.52 MILES

STATE OF ILLINOIS
 DEPARTMENT OF TRANSPORTATION
 DIVISION OF HIGHWAYS

SUBMITTED May 23, 20 05

 DEPUTY DIRECTOR OF HIGHWAYS, REGION ENGINEER

July 1, 20 05

 ENGINEER OF DESIGN AND ENVIRONMENT

July 1, 20 05

 DIRECTOR OF HIGHWAYS, CHIEF ENGINEER

**PRINTED BY THE AUTHORITY
 OF THE STATE OF ILLINOIS**