

F.A.P. RTE.	SECTION	COUNTY	TOTAL SHEETS	SHEET NO.
726		JEFFERSON	10	1

D-7 JOINT REPAIR 2005-1

STATE OF ILLINOIS
DEPARTMENT OF TRANSPORTATION

DIVISION OF HIGHWAYS

**PROPOSED
HIGHWAY PLANS**

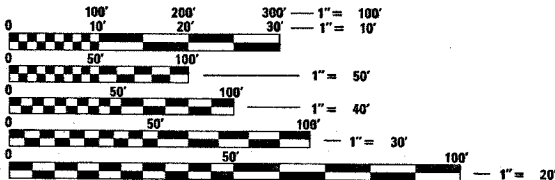
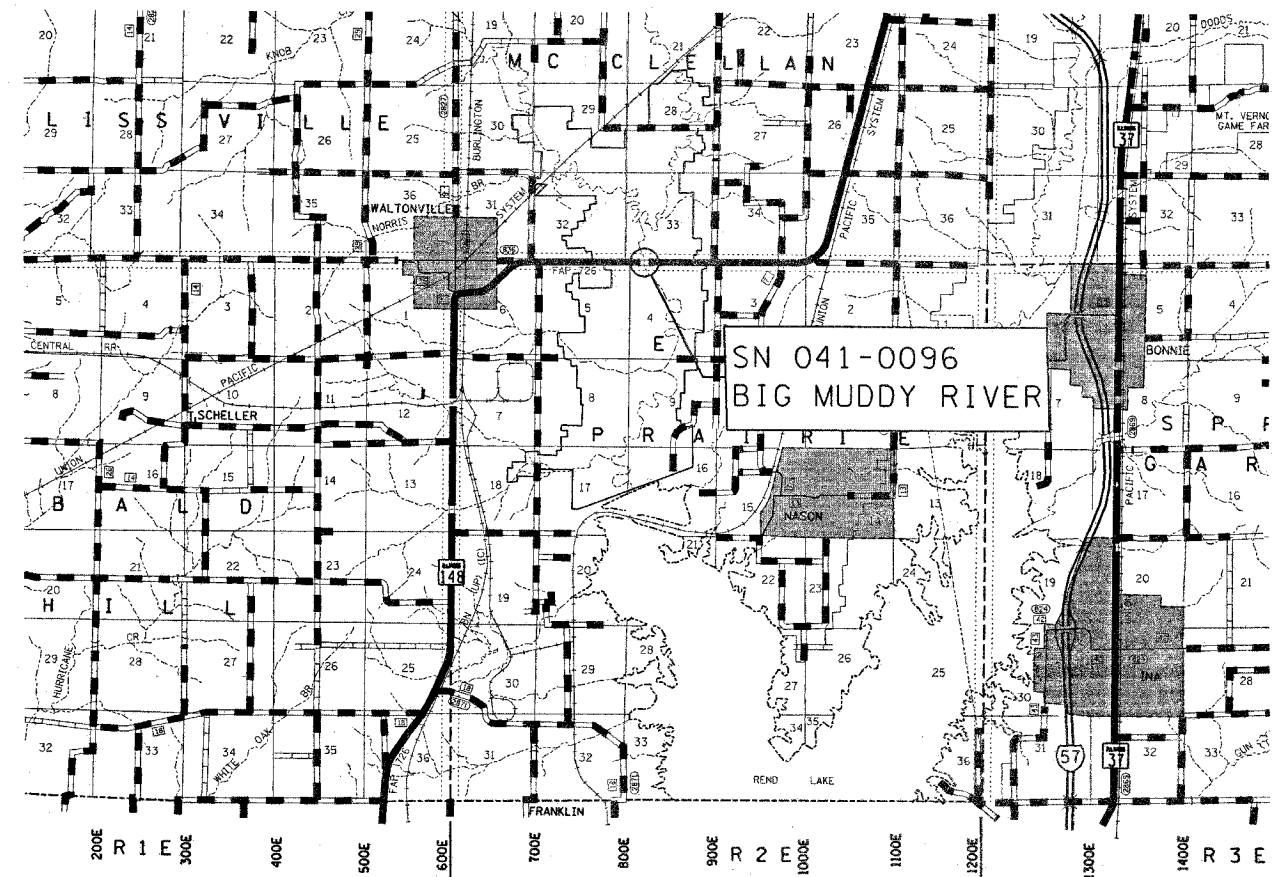
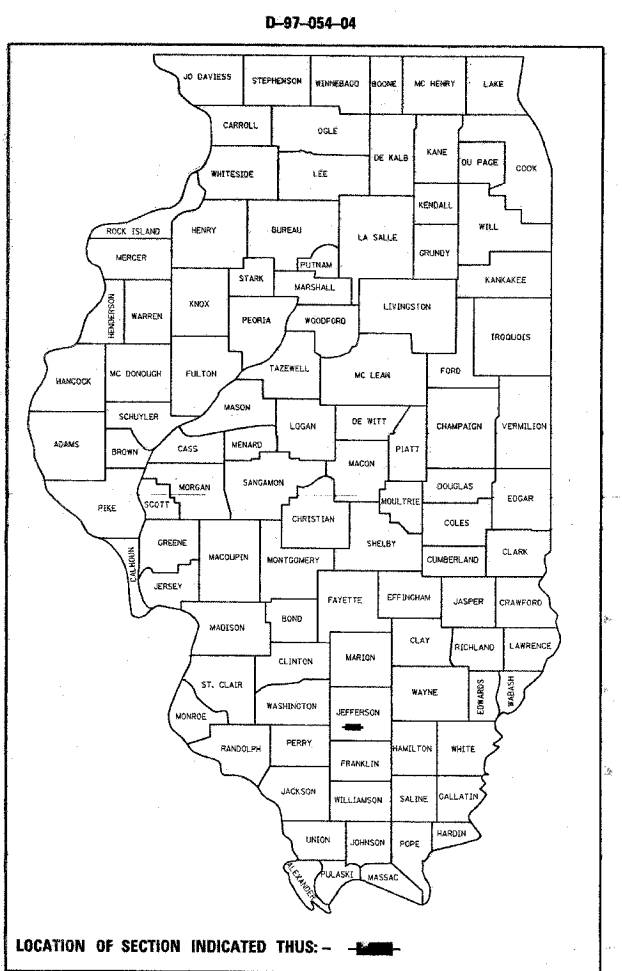
FAP ROUTE 726 (IL 148)

D-7 JOINT REPAIR 2005-1

JEFFERSON COUNTY

C-97-094-04

SEE SHEET 2 FOR INDEX OF SHEETS



FULL SIZE PLANS HAVE BEEN PREPARED USING STANDARD ENGINEERING SCALES. REDUCED SIZED PLANS WILL NOT CONFORM TO STANDARD SCALES. IN MAKING MEASUREMENTS ON REDUCED PLANS, THE ABOVE SCALES MAY BE USED.

J.U.L.I.E.
JOINT UTILITY LOCATION INFORMATION FOR EXCAVATION
1-800-892-0123

CONTRACT NO. 74073

2004 ADT = 2650

GROSS LENGTH = 646.7 FT
NET LENGTH = 646.7 FT

STATE OF ILLINOIS
DEPARTMENT OF TRANSPORTATION
DIVISION OF HIGHWAYS

SUBMITTED MARCH 29 2005

Christine M. Reed
DEPUTY DIRECTOR OF HIGHWAYS, REGION FOUR ENGINEER

May 13, 2005
Mike Reed
ENGINEER OF DESIGN AND ENVIRONMENT

May 13, 2005
Victor Madson
DIRECTOR OF HIGHWAYS, CHIEF ENGINEER

**PRINTED BY THE AUTHORITY
OF THE STATE OF ILLINOIS**

PROJECT ENGINEER : MIKE ALLEN
SQUAD LEADER :
DESIGNER : ALEC RING
TELEPHONE : 217/342-3951 EX 316