

F.A.P. RTE.	SECTION	COUNTY	TOTAL SHEETS	SHEET NO.
95	**	JASPER	6	1

** D7 SIGNAL MODERNIZATION 2006-3

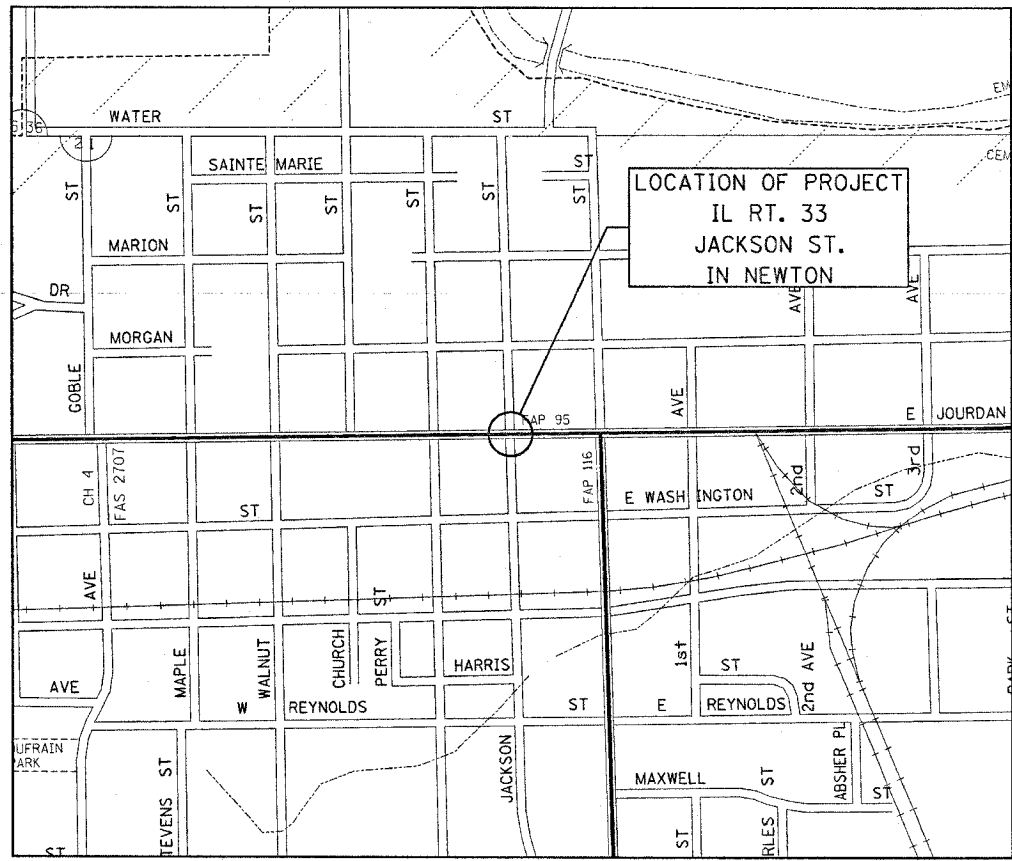
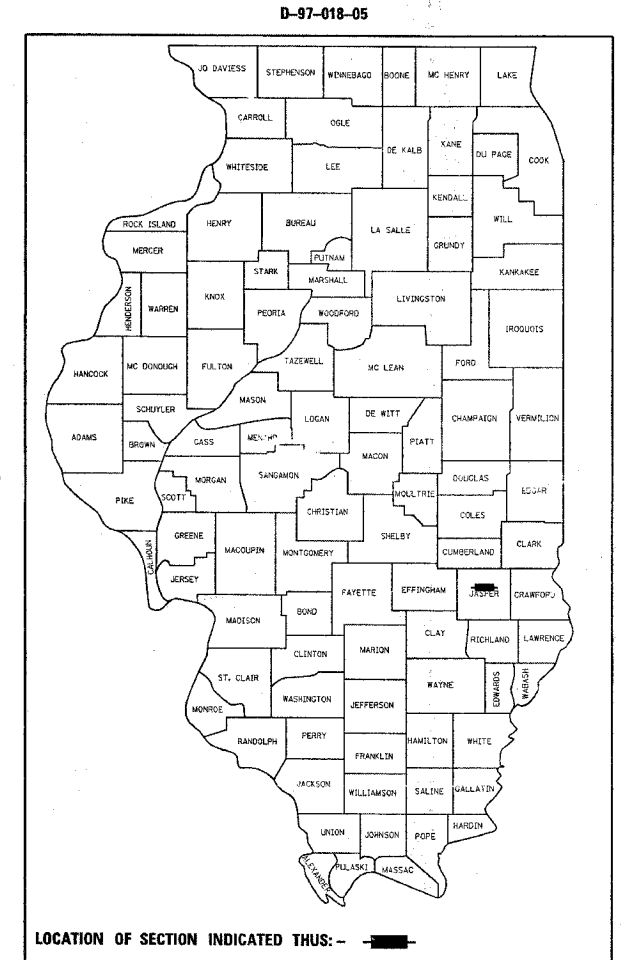
STATE OF ILLINOIS
DEPARTMENT OF TRANSPORTATION
DIVISION OF HIGHWAYS

**PROPOSED
HIGHWAY PLANS**

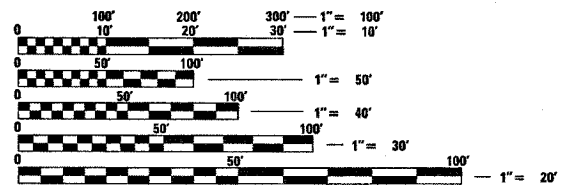
FAP ROUTE 95 (IL ROUTE 33)
D7 SIGNAL MODERNIZATION 2006-3
PROJECT HS-0095(050)
JASPER COUNTY

C-97-049-05

FOR INDEX OF SHEETS, SEE SHEET NO. 2



NEWTON



FULL SIZE PLANS HAVE BEEN PREPARED USING STANDARD ENGINEERING SCALES. REDUCED SIZED PLANS WILL NOT CONFORM TO STANDARD SCALES. IN MAKING MEASUREMENTS ON REDUCED PLANS, THE ABOVE SCALES MAY BE USED.

J.U.L.I.E.
JOINT UTILITY LOCATION INFORMATION FOR EXCAVATION
1-800-892-0123

PROJECT ENGINEER : ROB MACKLIN
SQUAD LEADER :
DESIGNER : LYNN MCCLELLAN
TELEPHONE : 217/342-3951 EX 245

STATE OF ILLINOIS
DEPARTMENT OF TRANSPORTATION
DIVISION OF HIGHWAYS

SUBMITTED May 17, 2005
Christ H. Reed
DEPUTY DIRECTOR OF HIGHWAYS, REGION ENGINEER

July 1, 2005
Mike Hine
ENGINEER OF DESIGN AND ENVIRONMENT

July 1, 2005
Victor Maden
DIRECTOR OF HIGHWAYS, CHIEF ENGINEER

**PRINTED BY THE AUTHORITY
OF THE STATE OF ILLINOIS**

PLOT DATE : 5/19/2005
FILE NAME : c:\proj\jaspers\74090\050\050.dgn
USER NAME : staff\mink