

F.A.P. RTE.	SECTION	COUNTY	TOTAL SHEETS	SHEET NO.
325	113RS-2	JERSEY	8	1

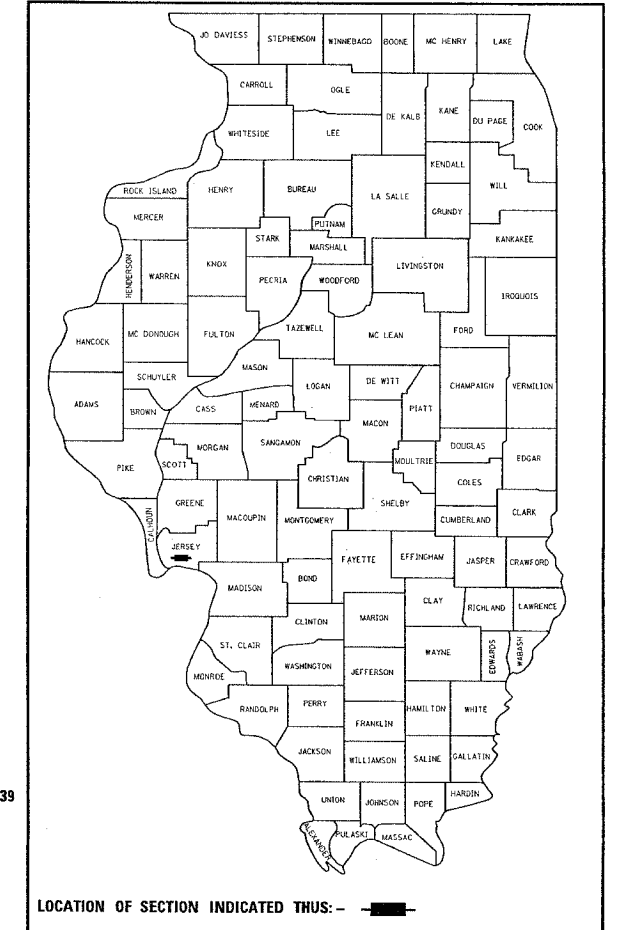
STATE OF ILLINOIS
 DEPARTMENT OF TRANSPORTATION
 DIVISION OF HIGHWAYS

**PROPOSED
 HIGHWAY PLANS**

FAP ROUTE 325 (IL 16)
 SECTION 113RS-2
 PROJECT (-)
 MILLING & RESURFACING
 JERSEY COUNTY
 C-98-100-05

FOR INDEX OF SHEETS, SEE SHEET NO. 2

D-98-080-05



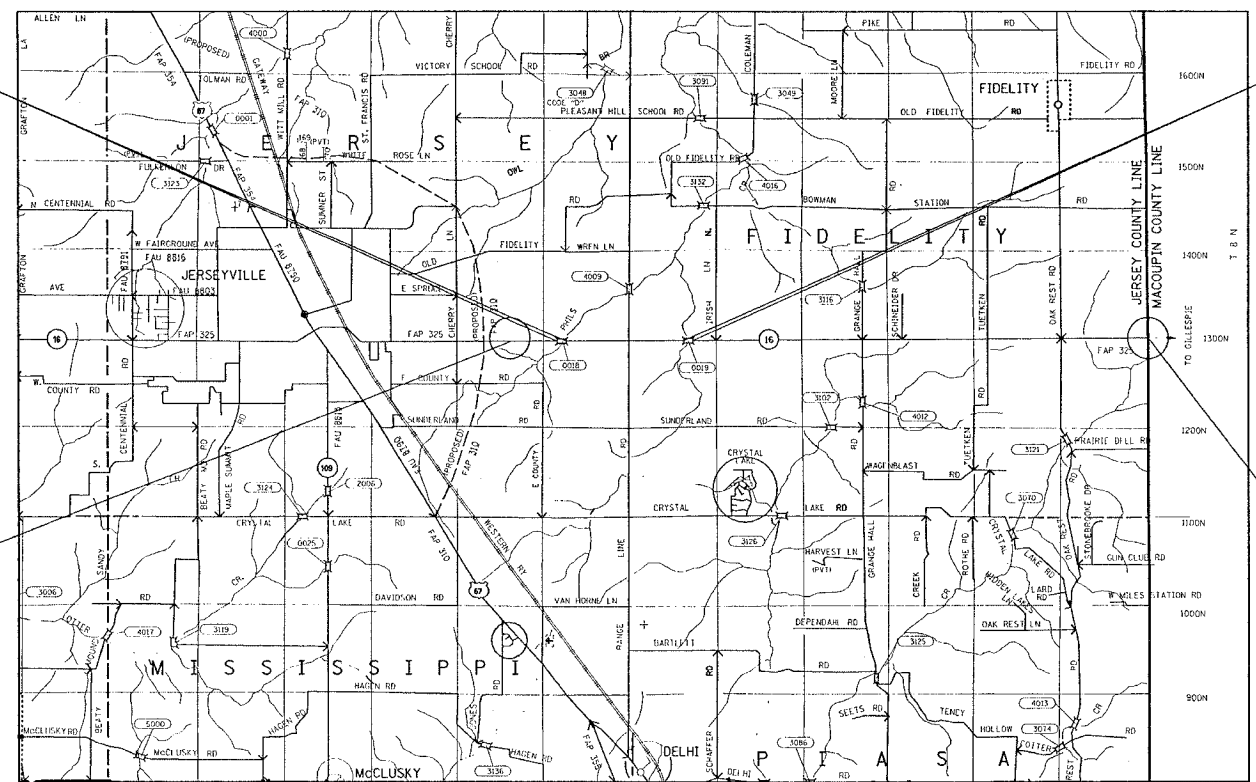
LOCATION OF SECTION INDICATED THUS: —

BRIDGE OMISSION:
 S.N. 042-0018
 M.S. 16.01 TO M.S. 16.06
 (252 FT)

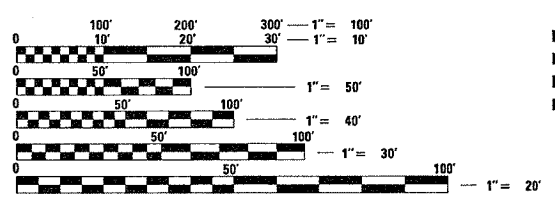
BRIDGE OMISSION:
 S.N. 042-0019
 M.S. 17.35 TO M.S. 17.39
 (212 FT)

BEGIN PROJECT
 M.S. 15.59
 LAT: 39.11656
 LONG: -90.28189

END PROJECT
 M.S. 22.79
 LAT: 39.11610
 LONG: -90.14569



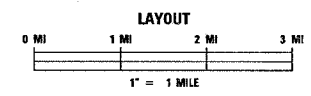
MICROFILMED
 REEL NUMBER _____
 AWARDED _____
 RESIDENT ENGINEER _____
 AS BUILT CHANGES WERE MADE
 ON THE FOLLOWING SHEETS _____



FULL SIZE PLANS HAVE BEEN PREPARED USING STANDARD
 ENGINEERING SCALES. REDUCED SIZED PLANS WILL NOT
 CONFORM TO STANDARD SCALES. IN MAKING MEASUREMENTS
 ON REDUCED PLANS, THE ABOVE SCALES MAY BE USED.

J.U.L.I.E.
 JOINT UTILITY LOCATION INFORMATION FOR EXCAVATION
 1-800-892-0123

2003 ADT: 2750
 2025 ADT: 3400
 SU: 4.0%
 MU: 3.3%



GROSS LENGTH: 7.2 MILES (38,016 FT)
 NET LENGTH: 7.1 MILES (37,552 FT)

CONTRACT NO. 76937

STATE OF ILLINOIS
 DEPARTMENT OF TRANSPORTATION
 DIVISION OF HIGHWAYS

SUBMITTED May 19 2005
May C. Lammie
 DEPUTY DIRECTOR OF HIGHWAYS
 REGION FIVE ENGINEER

July 1 2005
Mike Shea
 ENGINEER OF DESIGN AND ENVIRONMENT

July 1 2005
Victor Moders
 DIRECTOR, DIVISION OF HIGHWAYS

**PRINTED BY THE AUTHORITY
 OF THE STATE OF ILLINOIS**

PROJECT ENGINEER: PATTI LEBEAU (618) 346-3179
 SQUAD LEADER: CHERYL KEPLAR (618) 346-3186