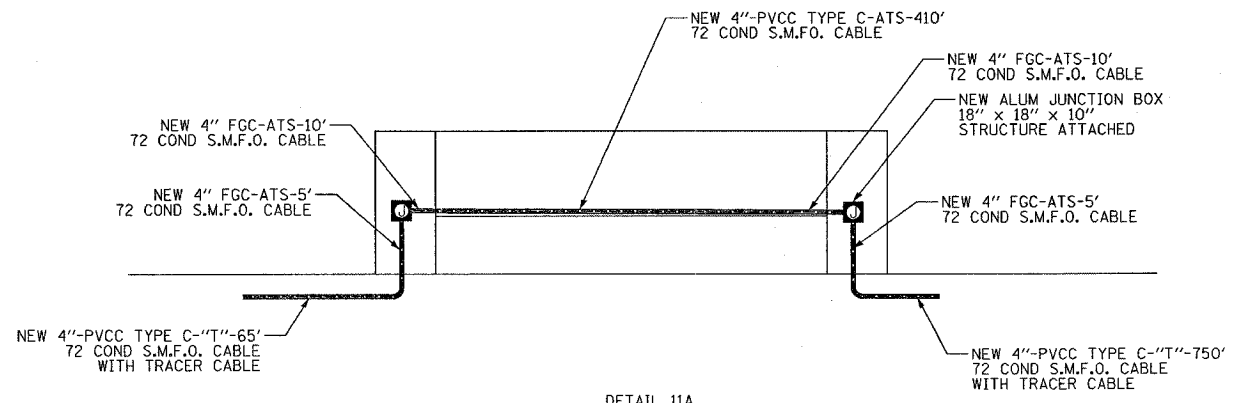


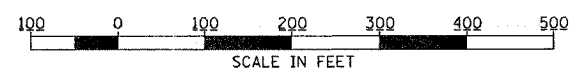
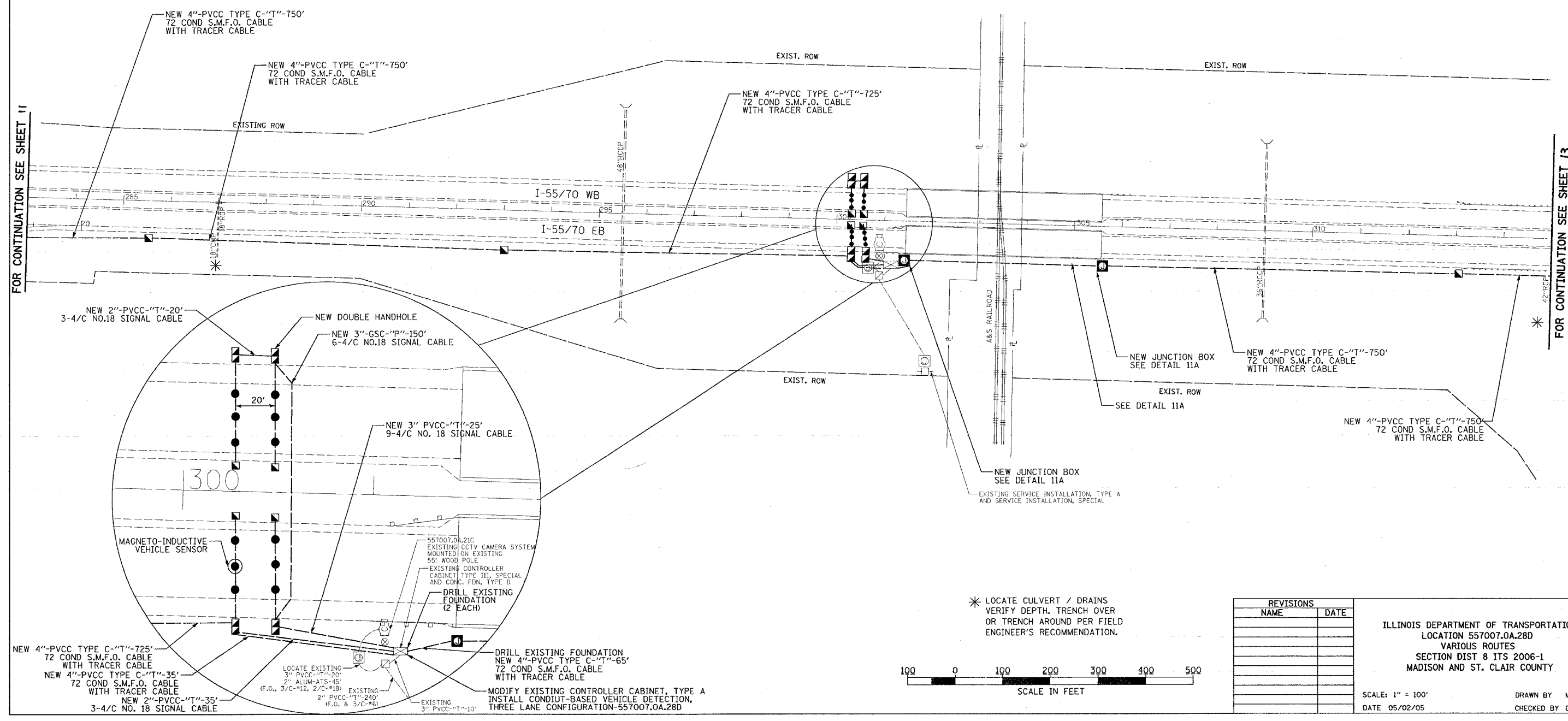
ROUTE	SECTION	COUNTY	TOTAL SHEETS	SHEET NO.
..	25	12
STA.	TO STA.			
FED. ROAD DIST. NO.	ILLINOIS	FED. AID PROJECT	****	
..	VARIOUS	CONTRACT#	76966	
..	DIST 8 ITS 2006-1			
..	MADISON & ST. CLAIR			
..	D-98-012-02			



- NOTES:
1. MINIMUM OF 10' FG CONDUIT SHOULD BE ATTACHED TO EITHER SIDE OF STRUCTURE OR PER FIELD ENGINEER'S RECOMMENDATION.
 2. CLAMP CONDUIT ON TOP OF BEAM FLANGE
 3. CONTRACTOR CANNOT WELD OR PENETRATE STRUCTURAL STEEL

FOR CONTINUATION SEE SHEET 11

FOR CONTINUATION SEE SHEET 13



* LOCATE CULVERT / DRAINS
VERIFY DEPTH, TRENCH OVER
OR TRENCH AROUND PER FIELD
ENGINEER'S RECOMMENDATION.

REVISIONS	
NAME	DATE

ILLINOIS DEPARTMENT OF TRANSPORTATION
LOCATION 557007.OA.28D
VARIOUS ROUTES
SECTION DIST 8 ITS 2006-1
MADISON AND ST. CLAIR COUNTY

SCALE: 1" = 100'
DATE 05/02/05

DRAWN BY MAM
CHECKED BY CAF