

F. A. U. NO.	SECTION	COUNTY	TOTAL SHEETS	SHEET NO.
1636	92-00037-03-PV	WILL	33	1
STA.		TO STA.		
FED. ROAD DIST. NO.		CLASS	FED. AID PROJECT	

INDEX OF SHEETS

1	TITLE SHEET, INDEX OF SHEETS, STATE STANDARDS
2	GENERAL NOTES
3-4	SUMMARY OF QUANTITIES
5	TYPICAL CROSS SECTIONS
6-8	ALIGNMENT AND TIES
9	SUGGESTED STAGING AND TRAFFIC CONTROL
10-12	PLAN AND PROFILE
13-16	DRAINAGE AND UTILITIES
17-18	PAVEMENT MARKING AND SIGNING
19-20	LANDSCAPING AND EROSION CONTROL
21-26	DETAILS
27-33	CROSS SECTIONS

STATE OF ILLINOIS
DEPARTMENT OF TRANSPORTATION
DIVISION OF HIGHWAYS

PLANS FOR PROPOSED FEDERAL AID HIGHWAY

STATE STANDARDS

00001-04	STANDARD SYMBOLS, ABBREVIATIONS AND PATTERNS
280001-02	TEMPORARY EROSION CONTROL SYSTEMS
542301	PRECAST REINFORCED CONCRETE FLARED END SECTION
542401	METAL END SECTION FOR PIPE CULVERTS
542606	REINFORCED CONCRETE PIPE TEE
602001	CATCH BASINS, TYPE A
602301	INLET, TYPE A
602401	MANHOLE, TYPE A
602601	PRECAST REINFORCED CONCRETE FLAT SLAB TOP
602701	CAST IRON STEPS
604001-02	FRAME AND LIDS, TYPE 1
604091-01	FRAME AND GRATE, TYPE 24
606001-02	CONCRETE CURB & COMBINATION CONCRETE CURB & GUTTER
701501-03	URBAN LANE CLOSURE, 2-L, 2-W, UNDIVIDED
702001-05	TRAFFIC CONTROL DEVICES
720001	SIGN PANEL MOUNTING DETAILS
720006	SIGN PANEL ERECTION DETAILS
780001-01	TYPICAL PAVEMENT MARKINGS
781001-02	TYPICAL APPLICATIONS, RAISED REFLECTIVE PAVEMENT MARKERS
701326-02	LANE CLOSURE 2L, 2W PAVEMENT WIDENING FOR SPEEDS ≥ 45 MPH

SCALES

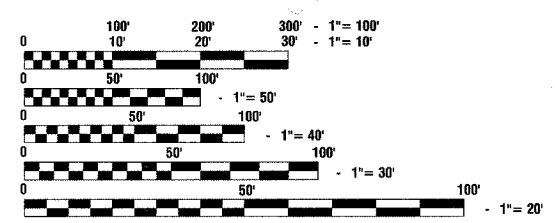
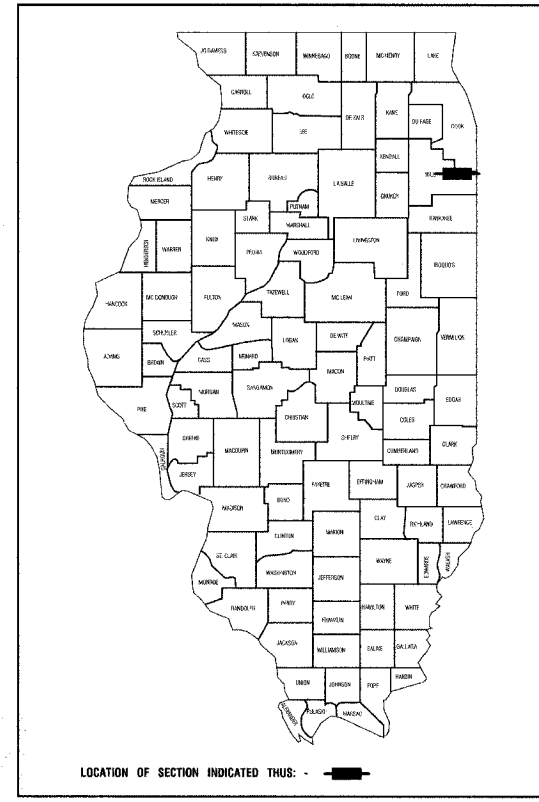
- PLAN - 1"=50'
- PROFILE HORIZ. - 1"=50'
- PROFILE VERT. - 1"=5'
- CROSS SECTIONS - 1"=10'

**F.A.U. ROUTE 1636 (RIGHTON ROAD)
(CRETE ROAD TO RONALD ROAD)
RECONSTRUCTION**

PROJECT: M-HPD-0256(003)

M.F.T. SECTION NO.: 92-00037-03-PV

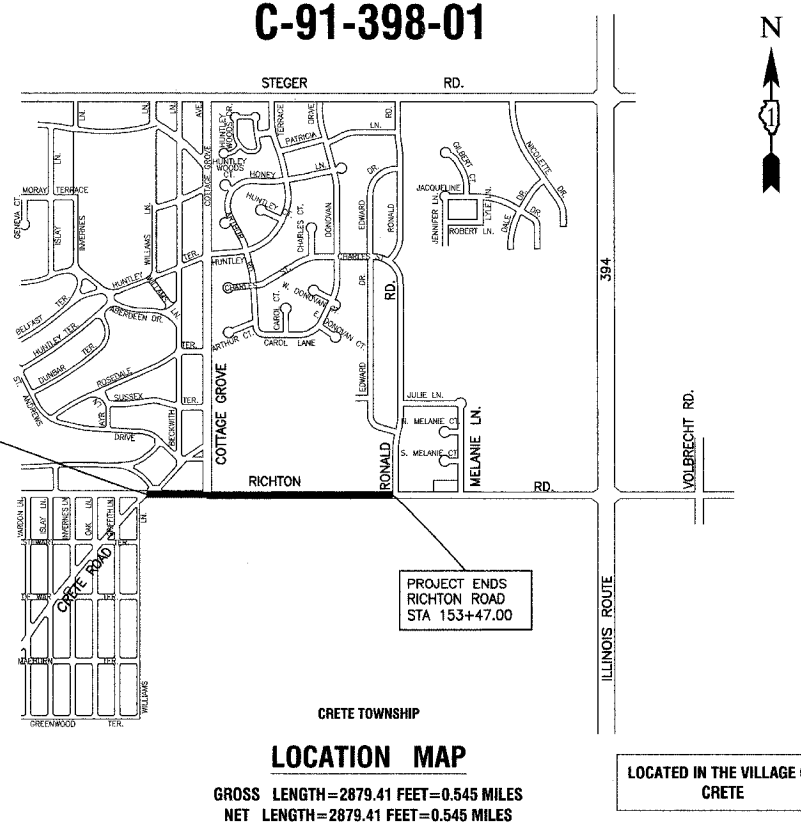
**VILLAGE OF CRETE
WILL COUNTY
C-91-398-01**



FULL SIZE PLANS HAVE BEEN PREPARED USING STANDARD ENGINEERING SCALES, REDUCED SIZED PLANS WILL NOT CONFORM TO STANDARD SCALES, IN MAKING MEASUREMENTS ON REDUCED PLANS, THE ABOVE SCALES MAY BE USED.

J. U. L. I. E.
JOINT UTILITY LOCATION INFORMATION FOR EXCAVATION
1-800-892-0123

CONTRACT NO. 83680



DESIGN DESIGNATION - 382 (2022) - URBAN COLLECTOR - (BIT. 20)

RIGHTON ROAD: DESIGN PERIOD 20YR CLASS II STREET
DESIGN SPEED LIMIT - 35 MPH

1996 ADT - 1800	IBR = 2.9
2008 ADT - 2315	PV = 2,125
	S _u = 76
	M _u = 109
	TF = 0.41
	D _{t req} = 3.70
	D _{t prov} = 3.99

POSTED SPEED LIMIT - 35 MPH

THE PROPOSED IMPROVEMENT CONSISTS OF ROADWAY RECONSTRUCTION, STORM SEWERS, LANDSCAPING AND APPURTENANT WORK.

STATE OF ILLINOIS
DEPARTMENT OF TRANSPORTATION

APPROVED 2-14-03 2003
[Signature] LOCAL AGENCY OFFICIAL

PASSED February 20, 2003
[Signature] DISTRICT ENGINEER OF LOCAL ROADS & STREETS

PASSED February 20, 2003
[Signature] DISTRICT ENGINEER

PREPARED BY OR UNDER THE DIRECT SUPERVISION OF:

[Signature] 2-17-2003

FEDERAL AID DESIGN ENGINEER: MAZHAR KHAN 847-705-4179