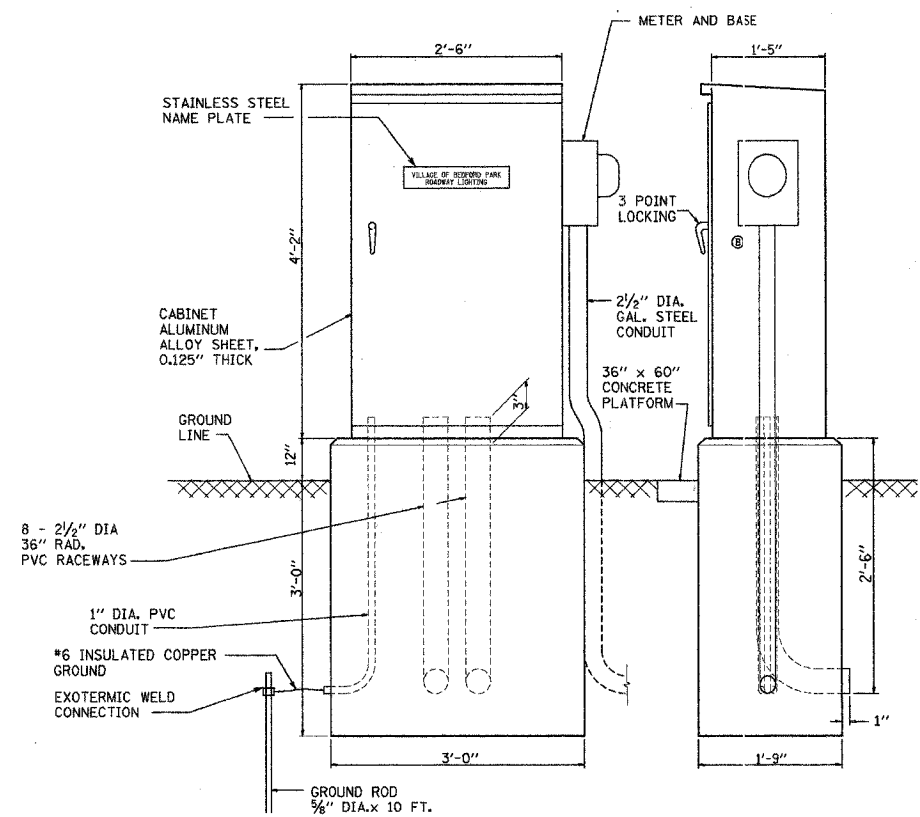
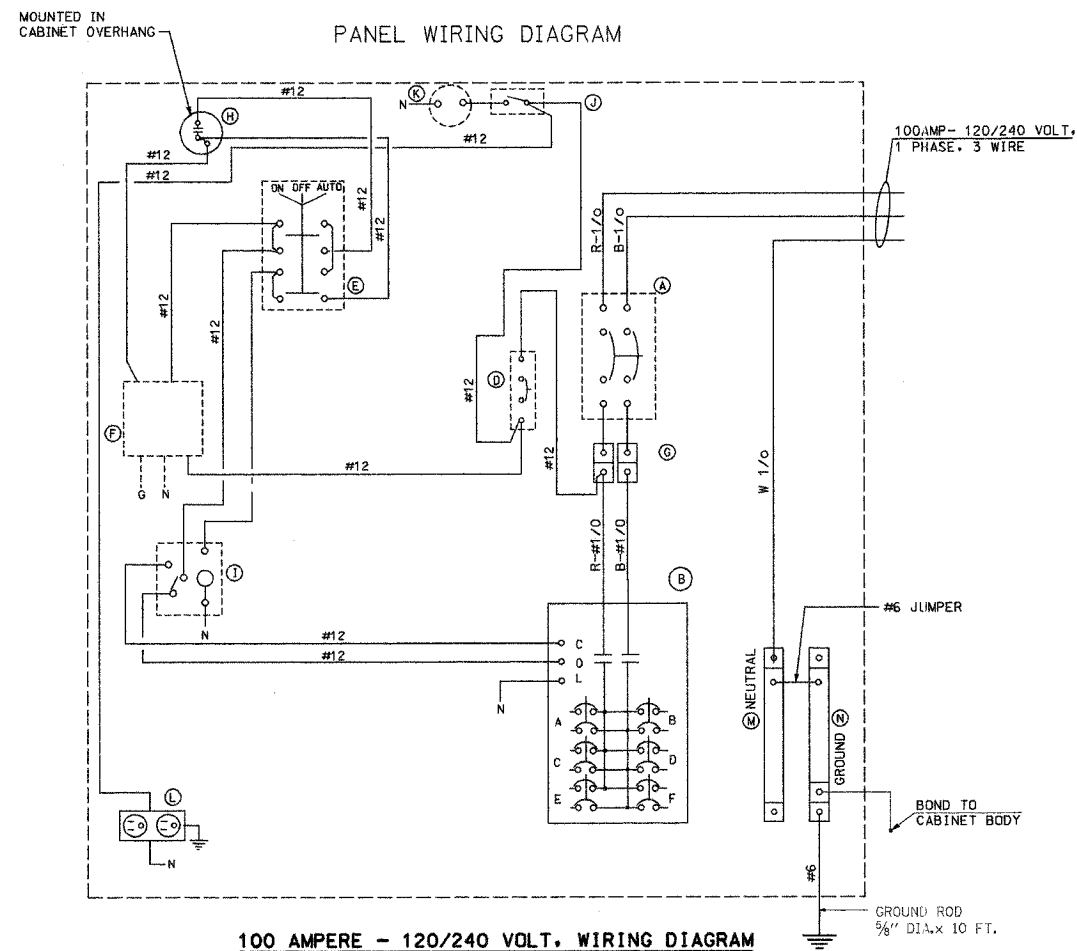


F.A. RTE.	SECTION	COUNTY	TOTAL SHEETS	SHEET NO.
1969	02-00025-00-LT	COOK	14	12
STA.	TO STA.			
FED. ROAD DIST. NO.	ILLINOIS	FED. AID PROJECT		
CONTRACT NO. - 83711				



CONTROL CABINET - SPECIAL

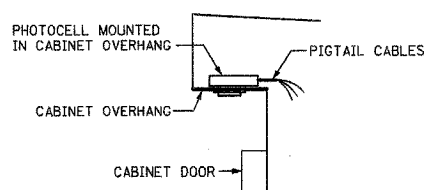


100 AMPERE - 120/240 VOLT. WIRING DIAGRAM

DEVICE SCHEDULE		
ITEM	QUANT.	DESCRIPTION
(A)	1	CIRCUIT BREAKER, MOLDED CASE, THERMAL MAGNETIC BOLT-ON TYPE, 2- POLE-100 AMPERE, 225 A FRAME, 240V _{ac} , NON INTERCHANGABLE TRIP, INTERRUPTING CAPACITY OF NOT LESS THAN 25,000 RMS SYMMETRICAL AMPERES AT 480 VOLT.
(B)	1	100 A CONTACTOR PANEL BOARD INTERIOR, 12 CKT, 1 PH, 3 WIRE, 6-2P/40 A BREAKERS, MOLDED CASE, THERMAL MAGNETIC BOLT-ON TYPE, 40 A, 480 A FRAME, 240V _{ac} , NON INTERCHANGABLE TRIP, INTERRUPTING CAPACITY OF NOT LESS THAN 14,000 RMS SYMMETRICAL AMPERES AT 480 VOLT.
(C)		SPARE
(D)	1	CIRCUIT BREAKER, MOLDED CASE, THERMAL MAGNETIC, 1-POLE, 240 V., BOLT-ON TYPE, 15 A. WITH AN INTERRUPTING RATING OF NOT LESS THAN 14,000 RMS SYMMETRICAL AMPERES AT 277 V.
(E)	1	SELECTOR SWITCH, 3 POSITION, ON-OFF-AUTO
(F)	1	5 WIRE SURGE PROTECTOR, EDCO-4803
(G)	1	TERMINAL BLOCKS FOR 1/0 CABLE, 600 VOLT - 620 AMP
(H)	1	PHOTO ELECTRIC CELL, MOUNTED IN CABINET OVERHANG
(I)	1	POWER RELAY, 120 VOLT COIL
(J)	1	20 A. SPST MICRO SWITCH MOUNTED ON A DOOR.
(K)	1	60 WATT LIGHT FIXTURE, VAPOR TIGHT, WITH GLOBE AND GUARD AND MOUNTING BOX
(L)	1	GFI RECEPTACLE, 120 V., 20 A., PREMIUM SPEC. GRADE, NEMA REFERENCE 5-20R IN WEATHER-PROOF BOX WITH FLAP-TYPE COVER.
(M)	1	NEUTRAL BUSS BAR
(N)	1	GROUND BUSS BAR

NOTES

- THE CONTROLLER FABRICATION SHALL COMPLY TO ARTICLE 1068.01 OF THE STANDARD SPECIFICATION.
- THE CABINET SHALL BE FABRICATED FROM 0.125" THICK ALUMINUM ALLOY SHEET AND SHALL BE REINFORCED WITH ALUMINUM ANGLES. THE CABINET DOOR SHALL BE NEMA TYPE 3R CONSTRUCTION WITH NEOPRENE GASKET. THE DOOR SHALL HAVE STAINLESS STEEL HINGES AND THREE POINT LOCKING SYSTEM.
- THE CONTRACTOR SHALL REMOVE VEGETATION AND TOPSOIL. LEVEL THE AREA IN FRONT OF THE CONTROL CABINET DOOR AND PLACE LENGTH WISE, PARALLEL TO CONTROL CABINET, A PRECAST PAD, 36"x60"x3" MINIMUM SIZE. THE COST OF LABOR AND MATERIALS SHALL BE INCIDENTAL TO THE CONTROL CABINET.
- CONTROL WIRE SHALL BE #12 AWG, 600V, TYPE "SIS" STRANDED COPPER GRAY SWITCH BOARD WIRE. THE ENDS OF ALL CONTROL WIRES SHALL BE IDENTIFIED.
- THE ELECTRIC METER BOX SHALL BE MOUNTED ON THE SIDE OF THE CONTROL CABINET, NEAR TO THE SERVICE POLE AND/OR AS DIRECTED BY THE ENGINEER.
- ALL WIRING WITHIN THE CABINET SHALL BE COLOR CODED AS INDICATED.
R = RED BL = BLUE W = WHITE
B = BLACK Y = YELLOW G = GREEN
- ALL WIRING SHALL BE NEATLY DRESSED AND SUPPORTED.
- ALL CONTROL CABINET ITEMS SHALL HAVE SUITABLE IDENTIFICATION. OPEN CIRCUIT BREAKERS, CONTACTORS AND OTHER OPEN DEVICES SHALL HAVE PERMANENT SELF STICKING TAGS. DEVICES IN ENCLOSURES SHALL HAVE ENGRAVED 2-COLOR LAMINATED PLASTIC NAMEPLATES ATTACHED TO ENCLOSURES WITH SCREWS. NAMEPLATES SHALL BE ENGRAVED TO CORRESPOND TO DESIGNATIONS ON THE DRAWINGS. INTERNAL CABINET WIRING SHALL BE IDENTIFIED AS INDICATED OR AS DIRECTED BY THE ENGINEER BY MEANS OF SELF-STICKING TAGS APPLIED AT EACH CONNECTED END. IDENTIFICATION SHALL BE MADE BY THE CABINET MANUFACTURER.
- PROVIDE SEALING GROMMETS FOR ALL OPEN WIRING EXTENDED FROM DEVICES IN BOXES OR CABINETS WITHIN THE CONTROL CABINET. THE CABINET SHALL BE PRIMED AND PAINTED AS SPECIFIED.
- THE HEADS OF CONNECTOR SCREWS SHALL BE PAINTED WHITE FOR NEUTRAL BUSS CONNECTION AND GREEN FOR GROUND BUSS CONNECTORS.
- THE CONTROLLER SHALL BE CONSTRUCTED TO U.L. STD. 508 AND BEAR THE U.L. LABEL "ENCLOSED INDUSTRIAL CONTROL PANEL".
- PROVIDE A HOLDER AND WATERPROOF POUCH ON THE INNER SIDE OF THE CONTROLLER DOOR. THE HOLDER AND POUCH SHALL BE MOUNTED SO THAT RAIN WATER OR CONDENSED WATER CANNOT ENTER THE POUCH WITH THE CABINET DOOR OPEN. FURNISH A LAMINATED APPROVED COPY OF THE "CONTROL CABINET WIRING DIAGRAM".
- THE CONTRACTOR SHALL OBTAIN ANCHOR BOLTS LOCATION TEMPLATE FROM THE FABRICATOR OF LIGHTING CONTROLLER



PHOTOCELL IN CABINET OVERHANG DETAIL
NOT TO SCALE

THIS DRAWING IS THE EXCLUSIVE PROPERTY OF SUNJOY INC. AND IS PROVIDED ONLY FOR THE PROJECT LISTED ON THIS DRAWING. THIS DRAWING SHALL NOT BE DUPLICATED, USED OR DISCLOSED, IN WHOLE OR IN PART, FOR ANY PURPOSE WHATSOEVER WITHOUT THE WRITTEN PERMISSION OF SUNJOY INC. DETAILS FROM EXCEL LTD - (847) 543-9138

Sunjoy Inc.
Area Lighting
212 TIMBERCREST DRIVE
SCHAUMBURG, ILLINOIS
60193-1572

ILLINOIS DEPARTMENT OF TRANSPORTATION
73rd STREET (FAU 1569)
VILLAGE OF BEDFORD PARK

LIGHTING CONTROLLER SPECIAL
100 AMPERE-120 VOLT/240 VOLT

SCALE: NONE DRAWN BY: HMQ
DATE: 04-15-05 CHECKED BY: JS

REVISION 5-21-05