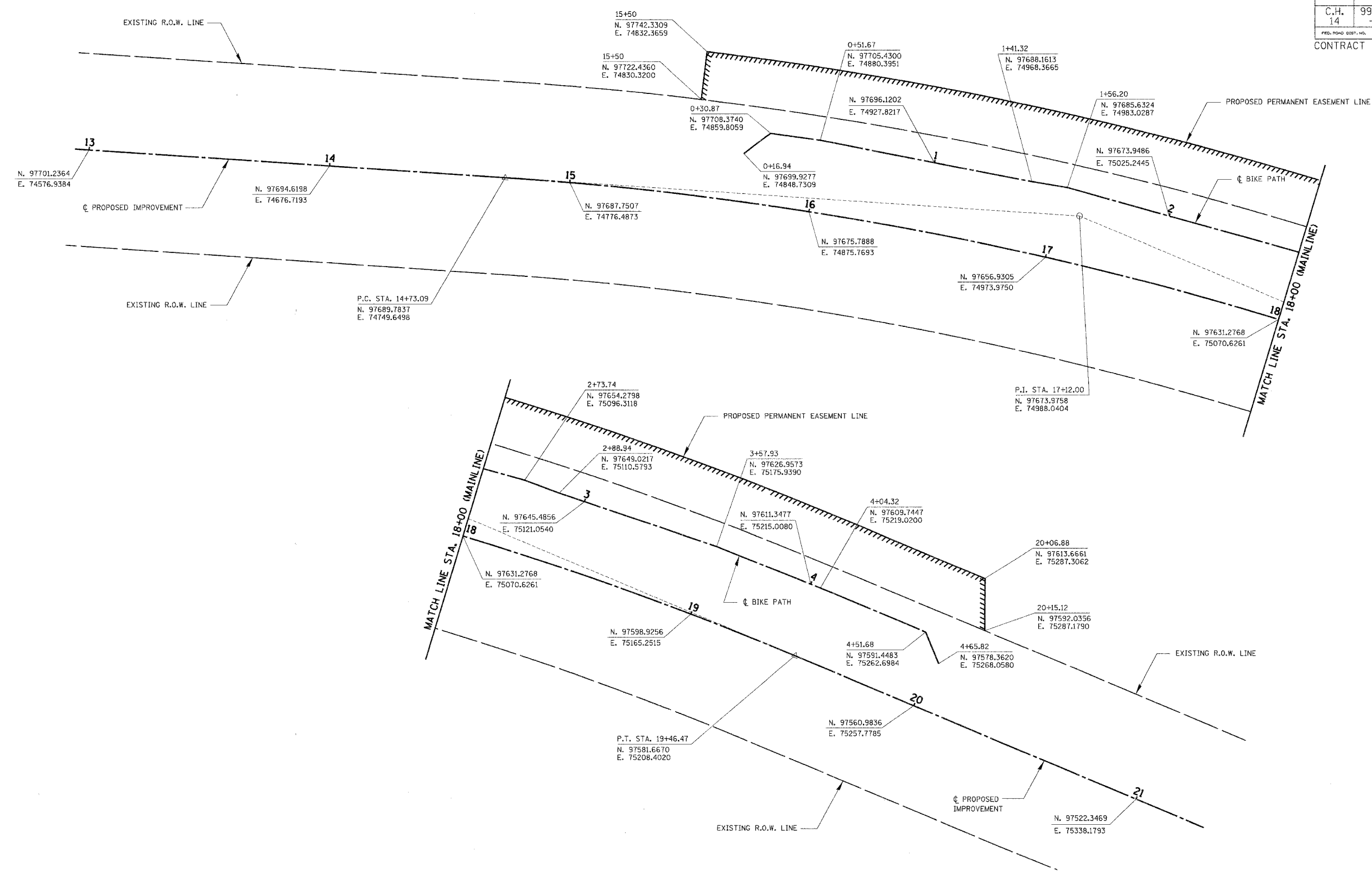



ROUTE NO.	SECTION	COUNTY	TOTAL SHEETS	SHEET
C.H. 14	99-00076 -11-BR	LAKE	66	6
FED. ROAD DIST. NO.	ILLINOIS	FED. AID PROJECT		

CONTRACT NO: 83763



SEE SHEETS 12 & 13 FOR TIE POINTS

	Rice, Berry and Associates A Division of Hampton, Lenzini and Renwick, Inc. Civil & Structural Engineers 801 S. Durkin Drive Springfield, Illinois 62704 217-546-3400	ALIGNMENT SECTION 99-00076-11-BR C.H. 14 / MILLBURN ROAD LAKE COUNTY
	Account Number 12-07-0043-1 Date: 06/22/04 DESIGNED: L.F.S. CHECKED: S.W.M. DRAWN: TWK	