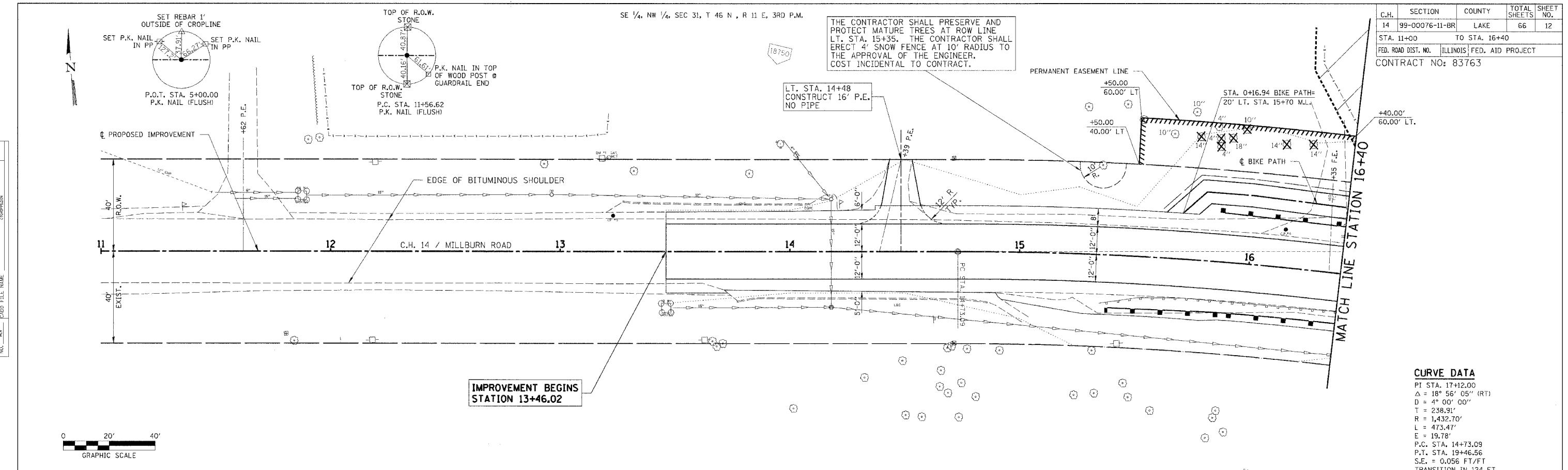


C.H.	SECTION	COUNTY	TOTAL SHEETS	SHEET NO.
14	99-00076-11-BR	LAKE	66	12
STA. 11+00		TO STA. 16+40		
FED. ROAD DIST. NO.		ILLINOIS	FED. AID PROJECT	
CONTRACT NO: 83763				

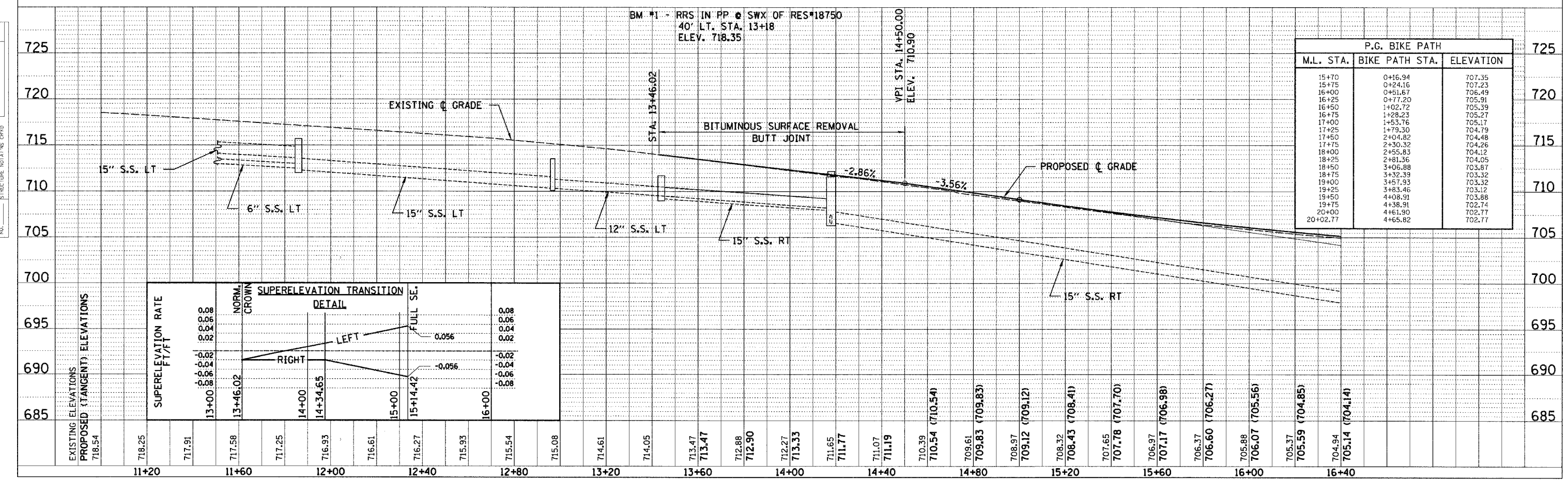
THE CONTRACTOR SHALL PRESERVE AND PROTECT MATURE TREES AT ROW LINE LT. STA. 15+35. THE CONTRACTOR SHALL ERECT 4' SNOW FENCE AT 10' RADIUS TO THE APPROVAL OF THE ENGINEER. COST INCIDENTAL TO CONTRACT.



CURVE DATA

PT STA. 17+12.00
 $\Delta = 18^\circ 56' 05''$ (RT)
 $D = 4^\circ 00' 00''$
 $T = 238.91'$
 $R = 1,432.70'$
 $L = 473.47'$
 $E = 19.78'$
P.C. STA. 14+73.09
P.T. STA. 19+46.56
S.E. = 0.056 FT/FT
TRANSITION IN 124 FT.
FROM STA. 13+46.02 TO STA. 15+14.42
FROM STA. 19+05.23 TO STA. 20+73.63

SE 1/4, NW 1/4, SEC 31, T 46 N, R 11 E, 3RD P.M.



PLAN

DATE	11-13-92
BY	...
NO.	...

PROFILE

DATE	...
BY	...
NO.	...