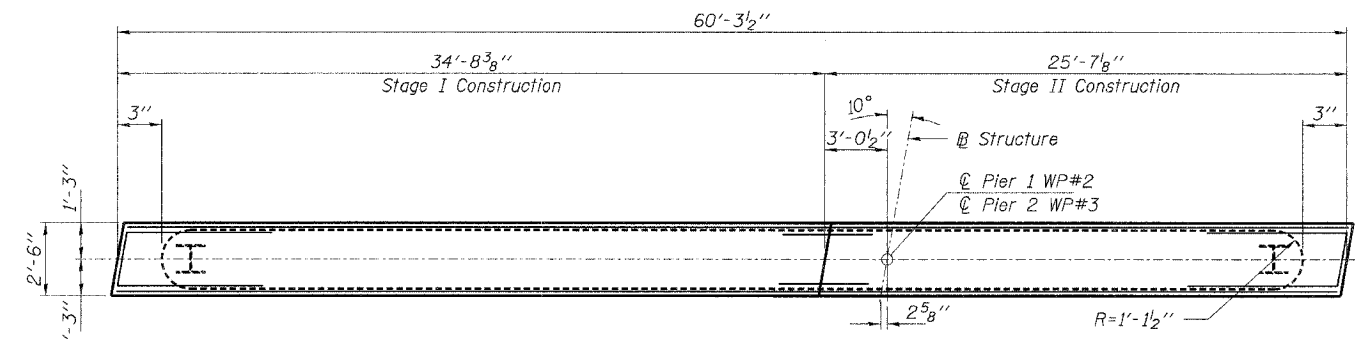
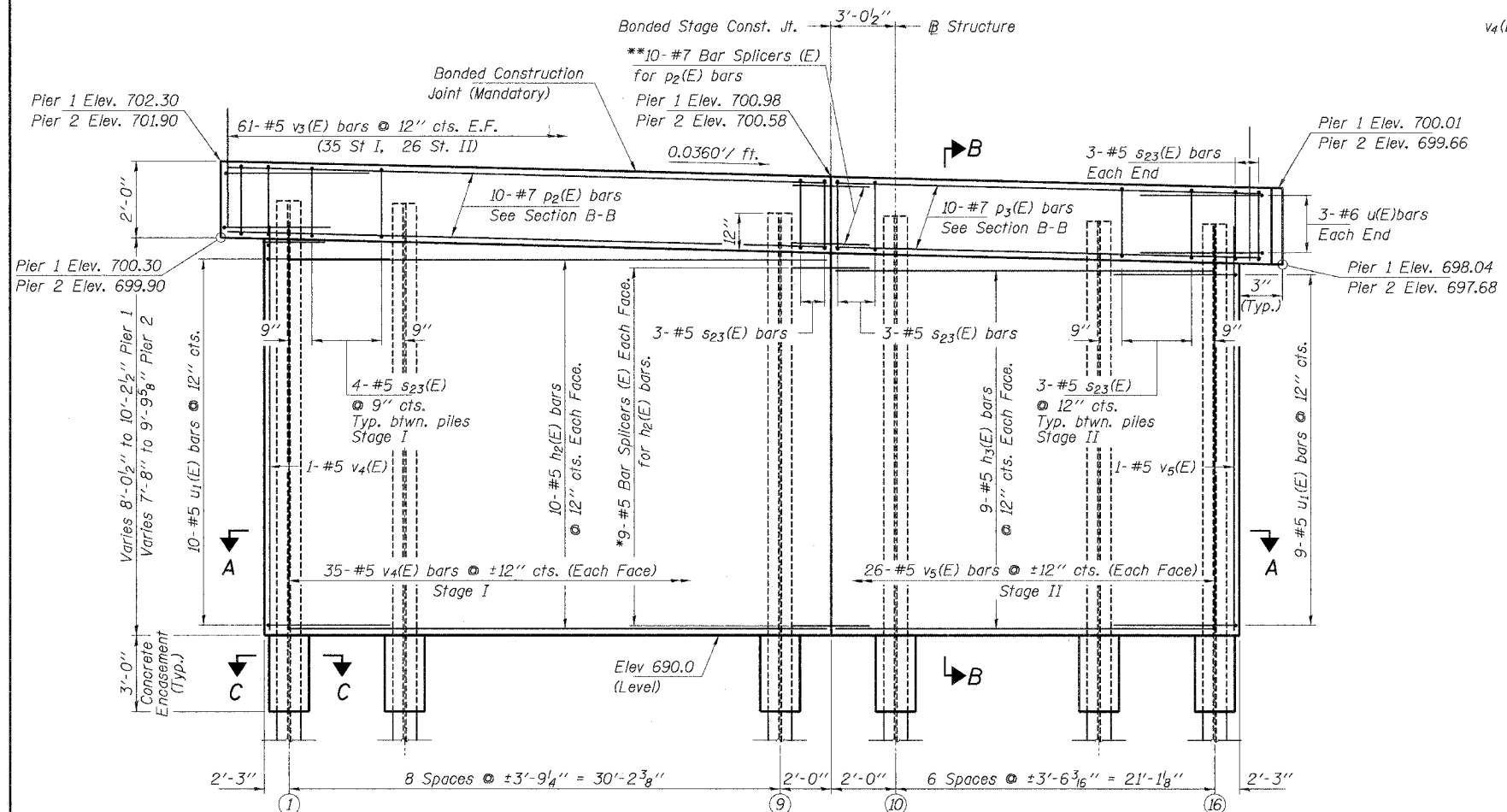


CONTRACT NO: 83763

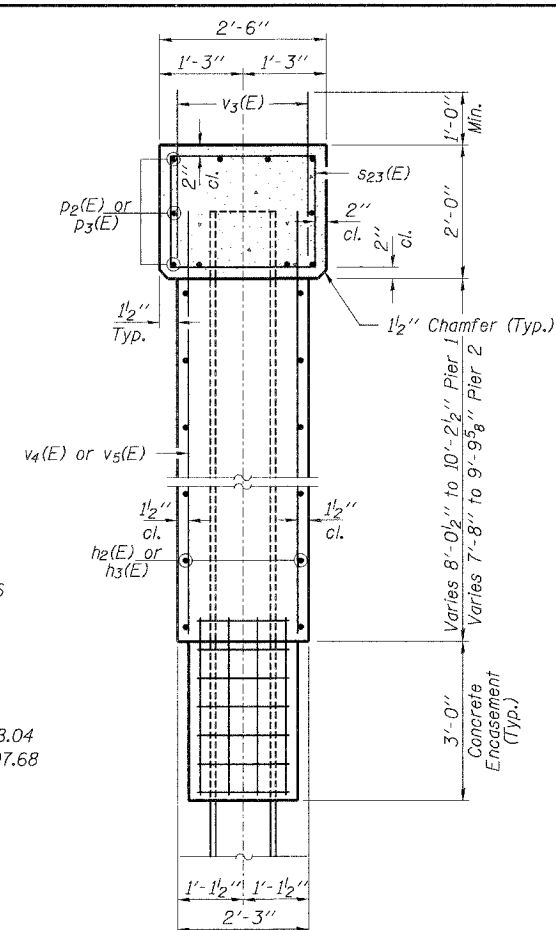


PLAN

** See sheet 33 for details.

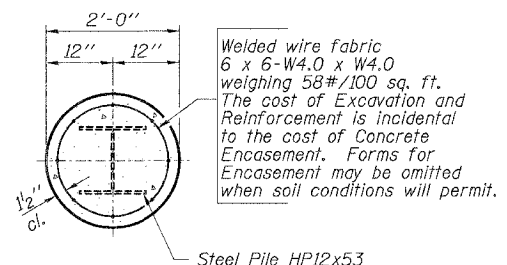


PIER ELEVATION
(Looking East)

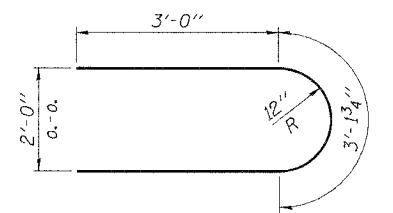


SECTION B-B

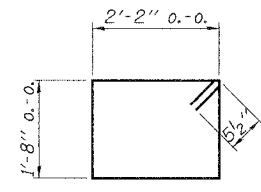
Dimensions are at Rt. Ls



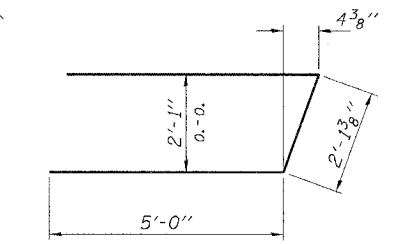
SECTION C-C



BAR u1(E)



BARS s23(E)



BAR u(E)

BILL OF MATERIAL - 2 PIERS

BAR NO.	SIZE	LENGTH	SHAPE
h2(E)	40 #5	33'-2"	—
h3(E)	36 #5	24'-1"	—
p2(E)	20 #7	34'-4"	—
p3(E)	20 #7	25'-3"	—
s23(E)	124 #5	8'-7"	□
u(E)	12 #6	12'-2"	U
u1(E)	38 #5	9'-2"	U
v3(E)	244 #5	2'-9"	—
v4(E)	142 #5	9'-4"	—
v5(E)	106 #5	10'-3"	—
Reinf. Bars, Epoxy Coated		Pound	9,630
Concrete Structures		Cu. Yd.	111.4
Steel Piles HP12x53		Foot	2,325
Test Pile Steel HP12x53		Each	1
Underwater Structure			
Excavation Prot. Location 1		Each	1
Underwater Structure			
Excavation Prot. Location 2		Each	1
Bar Splicers		Each	56
Concrete Encasement		Cu. Yd.	8.4

Notes:
All reinforcement bars shall be epoxy coated.
Pile spacing may be adjusted up to a 9'-0" spacing in order to span the existing gas line along the north ROW line. Only as approved by the Engineer.

Pile	TOP PILE ELEVATIONS															
	1	2	3	4	5	6	7	8	9	10	11	12	13	14	15	16
Pier 1	701.21	701.07	700.93	700.79	700.64	700.50	700.36	700.21	700.07	699.92	699.79	699.65	699.52	699.38	699.24	699.11
Pier 2	700.82	700.68	700.54	700.40	700.26	700.12	699.98	699.84	699.70	699.55	699.42	699.29	699.16	699.02	698.89	698.76

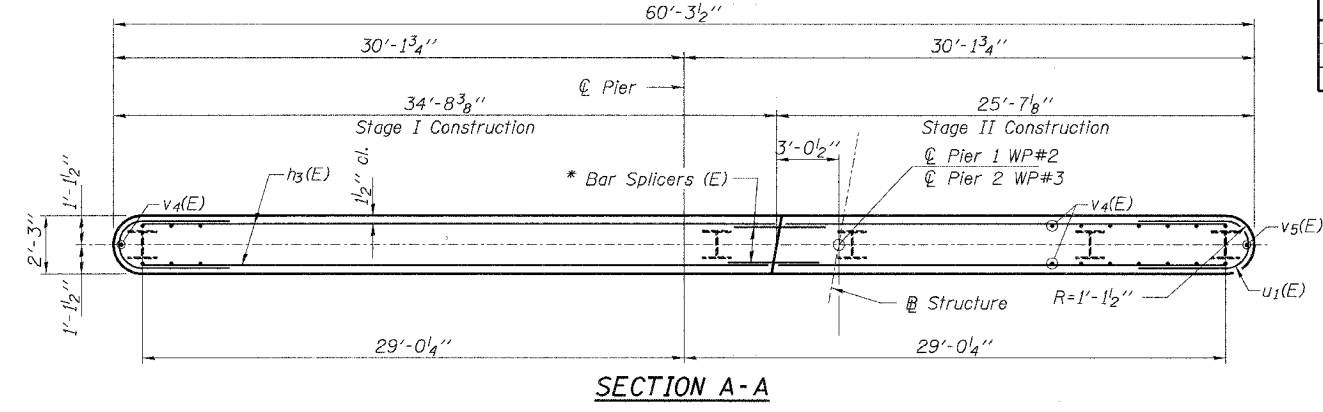
PILE DATA

Type: Steel HP12x53
No. Req'd: *32
Capacity: 70 Tons/Pile
Est. Lengths: 75 Ft/Pile

* Includes one test pile to be driven in permanent location at Pier 2.

HLR
Rice, Berry and Associates
A Division of Hampton, Lenzini and Renwick, Inc.
Civil & Structural Engineers
801 S. Durkin Drive
Springfield, Illinois 62704
217-546-3400
P.O. Box 1036
DuQuoin, Illinois 62832
618-190-4637
Account Number: 12-07-0043-1
Date: 05/23/05
DESIGNED: S.M.S. CHECKED: S.W.M. DRAWN: D.B.

PIERS
MILLBURN ROAD / CH 14
SECTION 99-00076-11-BR
LAKE COUNTY
STATION 17+65



SECTION A-A