

STATION/OFFSET/COORDINATE TABLE
PROPOSED R.O.W. CONTROL POINTS

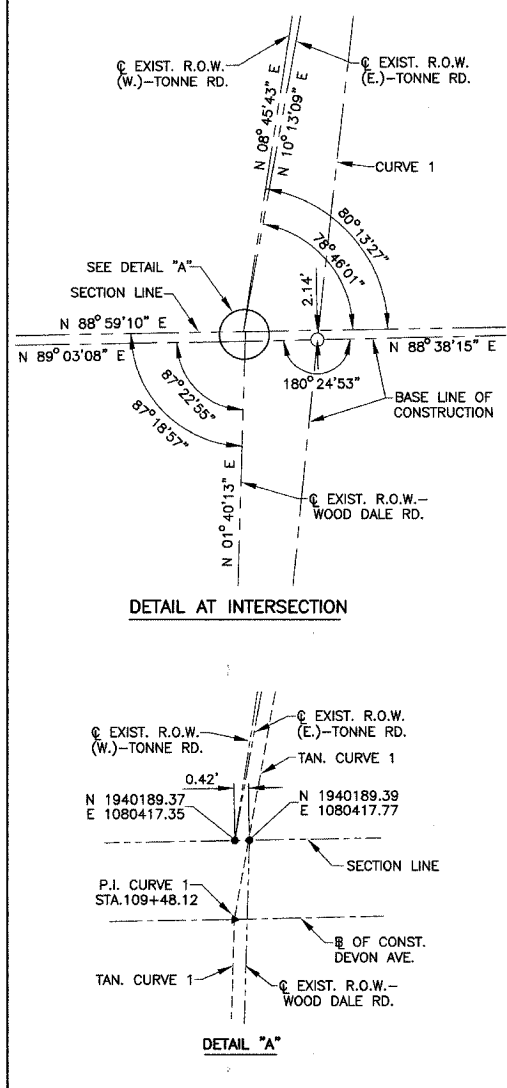
NO.	STATION	OFFSET	DESC.	NORTH	EAST
1	103+21.78	58.46' RT.		1940118.27	1079791.94
2	103+21.83	48.46' RT.		1940128.27	1079791.83
3	104+68.58	58.30' RT.		1940120.86	1079938.72
4	104+68.64	48.30' RT.		1940130.85	1079938.62
5	106+14.59	61.91' LT.		1940243.46	1080082.72
6	106+14.90	51.91' LT.		1940233.47	1080083.20
7	106+15.41	54.07' RT.		1940127.51	1080085.48
8	106+82.48	56.71' RT.		1940125.98	1080152.56
9	107+62.80	48.02' RT.		1940135.99	1080232.10
10	107+63.20	56.62' RT.		1940127.39	1080232.28
11	107+73.34	62.10' LT.		1940246.27	1080241.44
12	107+73.35	52.10' LT.		1940236.27	1080241.62
13	108+51.92	53.82' LT.	P.C.	1940239.30	1080320.15
14	NOT USED				
15	NOT USED				
16	NOT USED				
17	108+95.88	63.38' LT.	P.C.C.	1940249.59	1080363.95
18	109+23.20	99.79' LT.	P.T.	1940286.44	1080390.66
19	310+72.74	43.09' RT.	P.C.	1940105.35	1080469.34
20	110+39.38	52.26' RT.	P.T.	1940137.01	1080510.30
21	110+59.51	50.78' LT.	P.T.	1940240.49	1080527.38
22	110+60.52	55.78' LT.	P.T.	1940245.52	1080528.27
23	110+85.12	52.54' RT.		1940137.81	1080555.44
24	110+85.14	48.54' RT.		1940141.81	1080555.37
25	111+49.41	70.81' LT.		1940262.65	1080616.78
26	111+49.46	55.81' LT.		1940247.65	1080617.19
27	112+49.41	70.83' LT.		1940265.05	1080716.75
28	113+49.41	70.86' LT.		1940267.45	1080816.72
29	114+49.41	70.88' LT.		1940269.86	1080916.69
30	114+49.48	50.88' LT.		1940249.86	1080917.24
31	308+61.54	42.46' LT.		1939700.07	1080360.48
32	308+62.01	32.46' LT.		1939700.25	1080370.49
33	308+60.37	44.60' LT.		1939899.98	1080366.31
34	308+61.10	34.62' LT.		1939900.16	1080376.32
35	309+95.87	47.33' RT.		1940028.98	1080467.12
36	312+67.56	47.41' RT.		1940355.67	1080498.13
37	312+67.44	52.41' RT.		1940355.06	1080503.10
38	313+17.86	70.73' LT.		1940362.08	1080383.60
39	313+20.18	55.61' LT.		1940352.42	1080398.95
40	313+28.56	43.64' RT.		1940355.67	1080498.13
41	313+28.62	48.65' RT.		1940355.06	1080503.10
42	314+13.06	48.87' RT.		1940440.21	1080513.37
43	314+13.94	51.90' RT.		1940440.34	1080518.48
44	315+71.70	49.25' LT.		1940612.26	1080443.96
45	315+71.69	44.13' LT.		1940611.48	1080449.02
46	317+73.08	64.24' LT.		1940813.31	1080464.89
47	318+16.34	65.35' LT.		1940855.91	1080471.45
48	318+19.30	50.42' LT.		1940856.24	1080486.67
49	309+95.67	43.34' RT.		1940029.10	1080463.12
50	110+23.19	58.43' RT.	P.C.C.	1940130.45	1080493.67

STATION/OFFSET/COORDINATE TABLE
SURVEY CONTROL POINTS

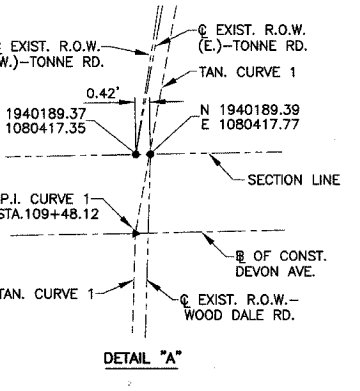
NO.	STATION	OFFSET	DESCRIP.	NORTH	EAST
A	103+23.23	48.45' RT.	IRON ROD	1940128.30	1079793.23
B	109+96.02	48.08' RT.	IRON PIPE	1940140.15	1080466.26
C	308+33.56	49.20' RT.	IRON PIPE	1939868.20	1080458.55
D	318+20.71	49.38' LT.	IRON ROD	1940857.53	1080488.03

BENCH MARKS

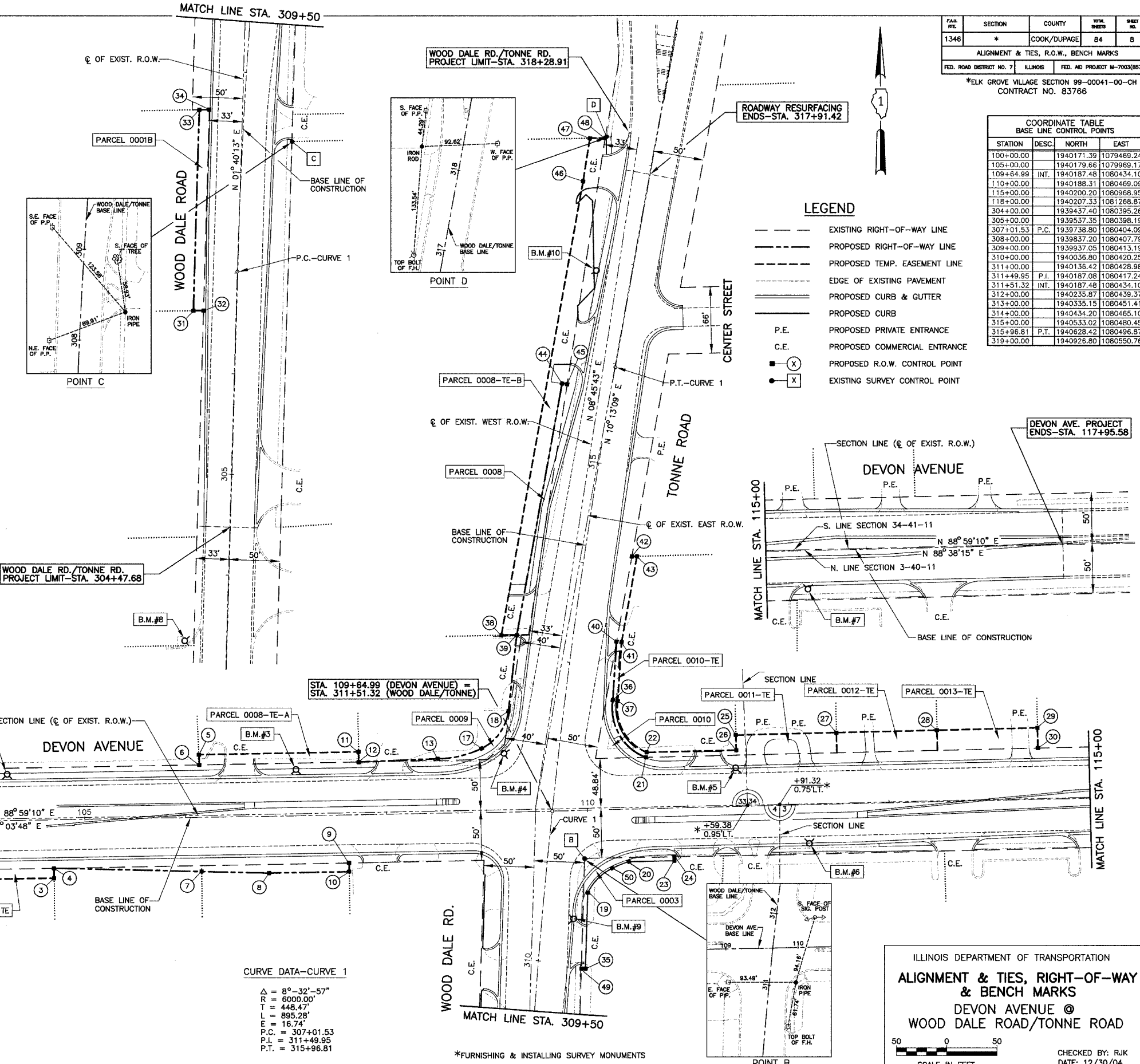
NO.	DESCRIPTION	STATION	OFFSET	ELEV.
1	NW HUB BOLT OF FIRE HYDRANT	101+51	46.4' LT.	721.52
2	NW HUB BOLT OF FIRE HYDRANT	104+23	45.5' LT.	721.74
3	NW HUB BOLT OF FIRE HYDRANT	107+41	46.0' LT.	722.13
4	NW HUB BOLT OF FIRE HYDRANT	109+38	58.2' LT.	721.62
5	NW HUB BOLT OF FIRE HYDRANT	111+49	38.7' LT.	721.52
6	SW HUB BOLT OF FIRE HYDRANT	112+20	38.4' RT.	722.27
7	SW HUB BOLT OF FIRE HYDRANT	115+38	38.3' RT.	717.61
8	NW HUB BOLT OF FIRE HYDRANT	302+03	42.2' LT.	720.74
9	NE HUB BOLT OF FIRE HYDRANT	310+45	31.1' RT.	723.95
10	NW HUB BOLT OF FIRE HYDRANT	318+88	35.5' LT.	716.42



DETAIL AT INTERSECTION



DETAIL "A"



CURVE DATA-CURVE 1
 $\Delta = 8^\circ-32'-57''$
 $R = 6000.00'$
 $T = 448.47'$
 $L = 895.28'$
 $E = 16.74'$
 $P.C. = 307+01.53$
 $P.T. = 311+49.95$
 $P.T. = 315+96.81$

FED. DIST.	SECTION	COUNTY	TOTAL SHEETS	SHEET NO.
1346	*	COOK/DUPAGE	84	8

ALIGNMENT & TIES, R.O.W., BENCH MARKS
 FED. ROAD DISTRICT NO. 7 ILLINOIS FED. AID PROJECT M-700(867)
 *ELK GROVE VILLAGE SECTION 99-00041-00-CH CONTRACT NO. 83786

COORDINATE TABLE
BASE LINE CONTROL POINTS

STATION	DESC.	NORTH	EAST
100+00.00		1940171.39	1079469.24
105+00.00		1940179.66	1079969.17
109+64.99	INT.	1940187.48	1080434.10
110+00.00		1940188.31	1080469.09
115+00.00		1940200.20	1080968.95
118+00.00		1940207.33	1081268.87
304+00.00		1939437.40	1080395.26
305+00.00		1939537.35	1080398.19
307+01.53	P.C.	1939738.80	1080404.09
308+00.00		1939837.20	1080407.79
309+00.00		1939937.05	1080413.19
310+00.00		1940036.80	1080420.25
311+00.00		1940136.42	1080428.98
311+49.95	P.T.	1940187.08	1080417.24
311+51.32	INT.	1940187.48	1080434.10
312+00.00		1940235.87	1080439.37
313+00.00		1940335.15	1080451.41
314+00.00		1940434.20	1080465.10
315+00.00		1940533.02	1080480.45
315+96.81	P.T.	1940628.42	1080496.87
319+00.00		1940926.80	1080550.78

LEGEND

- EXISTING RIGHT-OF-WAY LINE
- - - PROPOSED RIGHT-OF-WAY LINE
- - - PROPOSED TEMP. EASEMENT LINE
- EDGE OF EXISTING PAVEMENT
- PROPOSED CURB & GUTTER
- PROPOSED CURB
- P.E. PROPOSED PRIVATE ENTRANCE
- C.E. PROPOSED COMMERCIAL ENTRANCE
- (X) PROPOSED R.O.W. CONTROL POINT
- (X) EXISTING SURVEY CONTROL POINT

ILLINOIS DEPARTMENT OF TRANSPORTATION
**ALIGNMENT & TIES, RIGHT-OF-WAY
 & BENCH MARKS**
 DEVON AVENUE @
 WOOD DALE ROAD/TONNES ROAD

50 0 50
SCALE IN FEET

CHECKED BY: RJK
DATE: 12/30/04

*FURNISHING & INSTALLING SURVEY MONUMENTS