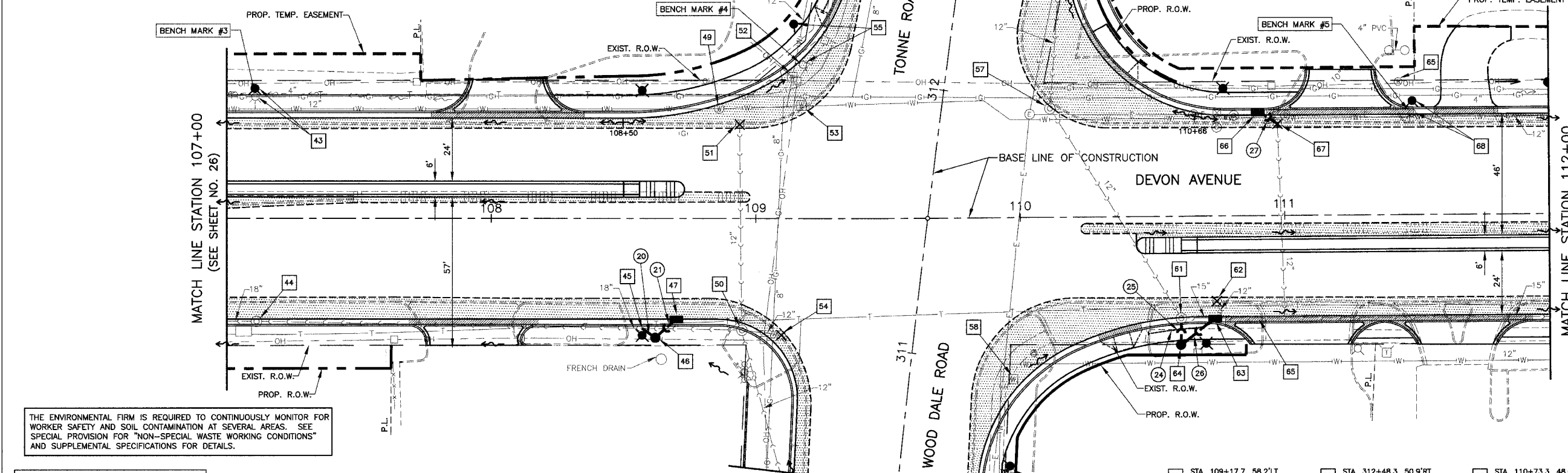


- 20 4'-12" SS, CL A, T-2 @ 50.50% TBF = 1.0 CU YD
- 21 7'-12" SS, CL A, T-1 @ 1.00% TBF = 0.9 CU YD
- 22 25'-PIPE UNDERDRAIN, FABRIC LINED TRENCH, 4"
- 23 7'-12" SS, CL A, T-1 @ 1.00% TBF = 1.7 CU YD
- 24 25' PIPE UNDERDRAIN, FABRIC LINED TRENCH, 4"
- 25 9'-12" SS, CL A, T-1 @ 1.00% TBF = 6.0 CU YD
- 26 12'-12" SS, CL A, T-2 @ 1.00% TBF = 1.6 CU YD
- 27 10'-12" SS (WM REQ) @ 1.00% TBF = 1.6 CU YD

FILE NO.	SECTION	COUNTY	TOTAL SHEETS	SHEET NO.
1346	*	COOK/DUPAGE	84	27

DRAINAGE & UTILITIES-DEVON AVE. STA. 107+00 TO 112+00  
 FED. ROAD DISTRICT NO. 7 ILLINOIS FED. AID PROJECT M-7003(857)

\*ELK GROVE VILLAGE SECTION 99-00041-00-CH  
CONTRACT NO. 83766



NOTE: TRAFFIC SIGNALS ARE NOT SHOWN

THE ENVIRONMENTAL FIRM IS REQUIRED TO CONTINUOUSLY MONITOR FOR WORKER SAFETY AND SOIL CONTAMINATION AT SEVERAL AREAS. SEE SPECIAL PROVISION FOR "NON-SPECIAL WASTE WORKING CONDITIONS" AND SUPPLEMENTAL SPECIFICATIONS FOR DETAILS.

SEE SHEET 38 FOR ADDITIONAL LEGEND

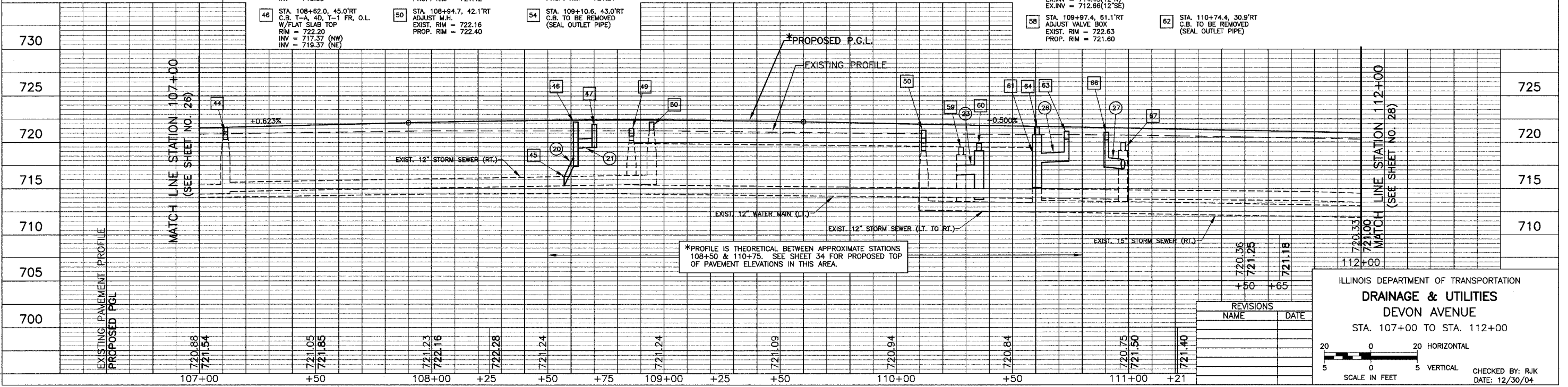
**LEGEND**

- PROPOSED PAVEMENT WIDENING
- PROPOSED DEPRESSED CURB

- 43 STA. 107+10.7, 45.9'LT FIRE HYDRANT TO BE MOVED TO 49.0'LT
- 44 STA. 107+11.2, 38.9'RT ADJUST M.H. EXIST. RIM = 721.63 PROP. RIM = 721.15
- 45 STA. 108+57, 41.5'RT CONNECT TO EXIST. PIPE W/ STORM SEWER WYE INV = 715.35
- 46 STA. 108+62.0, 45.0'RT C.B. T-A, 4D, T-1 FR, O.L. W/ FLAT SLAB TOP RIM = 722.20 INV = 717.37 (NW) INV = 718.37 (NE)
- 47 STA. 108+70.0, 38.0'RT INLET T-A, T-24 FR & GR RIM = 721.94 INV = 719.44
- 48 VOID
- 49 STA. 108+86.0, 41.4'LT ADJUST VALVE VAULT EXIST. RIM = 721.00 PROP. RIM = 721.42
- 50 STA. 108+94.7, 42.1'RT ADJUST M.H. EXIST. RIM = 722.16 PROP. RIM = 722.40
- 51 STA. 108+94.3, 34.2'LT C.B. TO BE REMOVED (SEAL OUTLET PIPE)
- 52 STA. 109+14.0, 53.5'LT ADJUST VALVE BOX EXIST. RIM = 720.82 PROP. RIM = 720.85
- 53 STA. 109+17.4, 42.6'LT ADJUST VALVE BOX EXIST. RIM = 720.39 PROP. RIM = 721.21
- 54 STA. 109+10.6, 43.0'RT C.B. TO BE REMOVED (SEAL OUTLET PIPE)

NOTE: SEE SHEET 38 FOR PROFILE BETWEEN STAS. 310+50 & 312+50

- 55 STA. 109+17.7, 58.2'LT FIRE HYDRANT TO BE MOVED TO STA. 109+14.3, 73.2'LT
- 56 STA. 312+46.5, 41.0'LT INLET T-A, T-1F, O.L. RIM = 719.71 INV = 715.61
- 57 STA. 110+11.7, 41.1'LT RECONSTRUCT M.H. EXIST. RIM = 719.91 PROP. RIM = 721.30 INV = 715.08(12'NE) EX. INV = 714.43(12'N) EX. INV = 712.66(12'SE)
- 58 STA. 109+97.4, 61.1'RT ADJUST VALVE BOX EXIST. RIM = 722.63 PROP. RIM = 721.60
- 59 STA. 312+48.3, 50.9'RT FILL C.B. TO MAINTAIN FLOW INV = 716.48
- 60 STA. 312+48.9, 58.5'RT C.B. T-A, 4D, T-1 FR, O.L. W/ FLAT SLAB TOP RIM = 719.89 INV = 716.55
- 61 STA. 110+60.5, 37.3'RT ADJUST M.H. EXIST. RIM = 721.25 PROP. RIM = 721.23 INV = 715.95(12'S)
- 62 STA. 110+74.4, 30.9'RT C.B. TO BE REMOVED (SEAL OUTLET PIPE)
- 63 STA. 110+73.3, 48.0'RT INLET T-A, T-24 FR & GR RIM = 721.16 INV = 718.16
- 64 STA. 110+61.0, 48.6'RT C.B. T-A, 4D, T-1 FR, C.L. W/ FLAT SLAB TOP RIM = 721.67 INV = 718.04 (12'NE) INV = 716.04 (12'NN)
- 65 STA. 111+43.2, 50.3'LT ADJ. DOM. WATER SERVICE BOX
- 66 STA. 110+90.4, 38.0'LT INLET T-A, T-24 FR & GR RIM = 721.07 INV = 717.05
- 67 STA. 110+97.6, 33.4'LT FILL C.B. TO MAINTAIN FLOW INV = 716.05
- 68 STA. 111+48.5, 37.4'LT FIRE HYDRANT TO BE MOVED TO 43.0'LT



ILLINOIS DEPARTMENT OF TRANSPORTATION  
**DRAINAGE & UTILITIES**  
**DEVON AVENUE**  
STA. 107+00 TO STA. 112+00

REVISIONS	NAME	DATE

CHECKED BY: RJK  
DATE: 12/30/04