

**RANDALL ROAD
 @ CURVE #2**
 RADIUS = 9950.00'
 ARC LENGTH = 232.66'
 CHORD LENGTH = 116.33'
 TANGENT LENGTH = 116.33'
 DEGREE OF CURVE = 00°-34'-33"
 MID ORDINATE = 0.68'
 EXTERNAL SECANT = 0.68'
 INCLUDED ANGLE = 01°-20'-23"
 PC = 30+95.36
 PT = 33+28.01

ROCK OUTLET PROTECTION TABLE STA. 31+50 TO STA. 36+50

NO.	ASSOCIATED STRUCTURE OUTLET NO.	ROCK GRADATION	DEPTH (IN.)	WIDTH 1 (FT.)	WIDTH 2 (FT.)	LENGTH (FT.)	AREA (SQ. YD.)
R12	113A	6	32	13	28	28	65

DRAINAGE STRUCTURE TABLE STA. 31+50 TO STA. 36+50

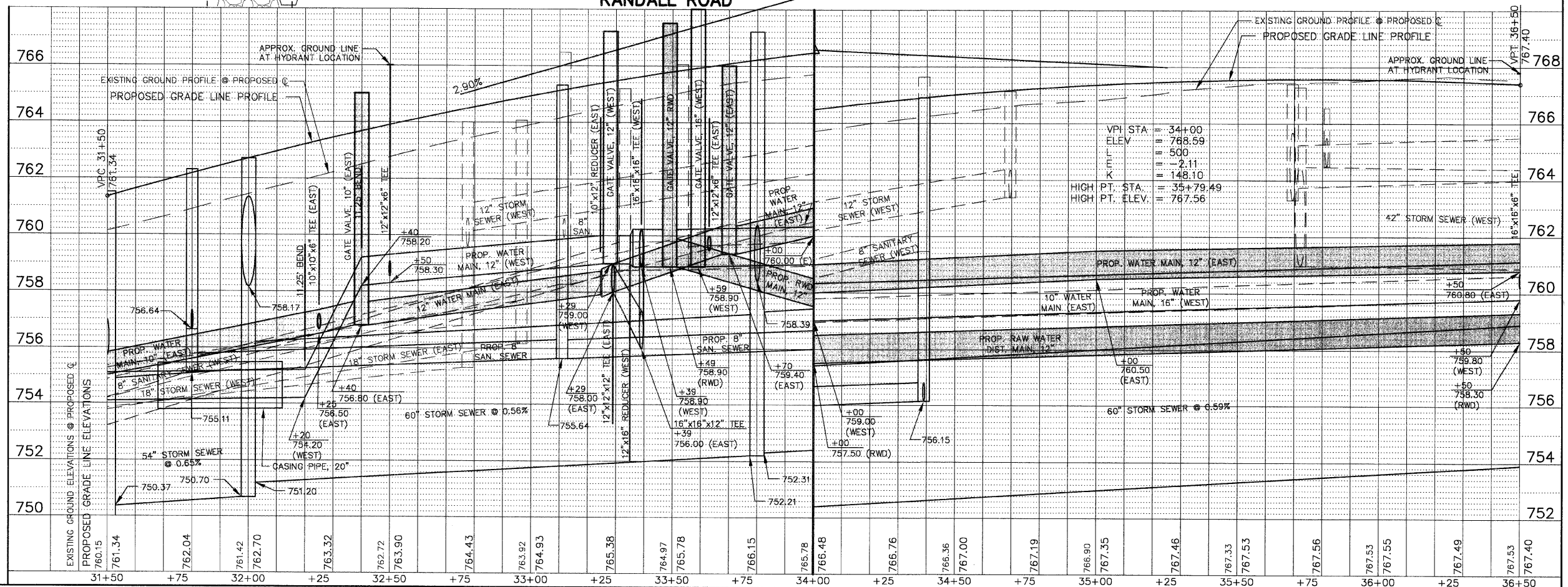
NO.	STA.	OFFSET	STRUCTURE TYPE/SIZE	FRAME & GRATE	RIM ELEV. EPI/FR	INVERT (N)	INVERT (S)	INVERT (E)	INVERT (W)
108	31+70	48.11' LT	A 4		24	781.55			757.30
109	31+70	15' LT	A 4		8	781.90		756.96	756.86
110	31+70	CL	A 4		8	781.90		756.72	756.82
111	31+70	15' RT	A 4		11V	781.73		756.48	756.58
112	31+70	48.11' RT	A 4		24	781.55		756.04	755.94
113	32+00	63' RT	JCT*		1C	784.00	750.70	751.20	758.17
113A	32+05	48' RT		PRC FES 48 EQ ELL					757.53
114	36+00	58' LT			8	767.00			762.17
114A	36+00	39' LT	A 4		1C	767.37	764.11		764.11
115	34+80	58' LT			8	766.80			762.55
115A	34+80	39' LT	A 4		1C	767.05	762.11	763.73	762.38
115A	34+80	39' LT	A 4		1C	767.05	762.11	763.73	762.38
115B	35+12.2	58' LT			11V	766.70	762.70 NW		762.77
116	34+80	1.23' RT	A 4		8	765.75			761.50
117	33+80	58' LT			8	765.75			761.50
118	33+80	51' LT	A 4		24	765.80		761.44	761.34
118A	33+80	39' LT	A 4		1C	766.04	760.30	761.11	760.20
119	33+80	15' LT	A 4		11V	766.04		759.96	759.86
120	33+80	2.35' LT	A 4		8	766.17		759.74	759.64
121	33+80	10.29' RT	A 5		11V	765.95		759.52	759.02
122	33+80	51' RT	A 5		24	765.80		758.60	758.50
123	33+80	63' RT	A 7		1C	767.20	752.21	752.31	758.39

*SEE JUNCTION STRUCTURE DETAIL

SCALE: 1" = 20'

PIPE TABLE STA. 31+50 TO STA. 36+50

PIPE NO.	PIPE LOCATION FROM STR # TO STR #	DESCRIPTION	DIA (IN)	L (FT)	S (%)	TRENCH BACKFILL	
						L (FT)	VOL (CY)
S87	113 107A	SS 2 RCCP CL IV	54	50	0.65	50	168.1
S88	108 109	SS 2 RCCP CL IV	15	34	1.00	34	7.2
S89	109 110	SS 2 RCCP CL IV	15	14	1.00	2	0.5
S90	110 111	SS 2 RCCP CL IV	15	14	1.00	2	0.6
S91	111 112	SS 2 RCCP CL IV	15	34	1.00	34	10.4
S92	112 107A	SS 2 RCCP CL IV	15	23	1.00	10	7.8
S93	123 113	SS 2 RCCP CL IV	60	180	0.56	180	571.7
S94	114A 115A	SS 1 RCCP CL IV	15	120	0.32	120	14.5
S94A	114 114A	SS 1 RCCP CL IV	15	19	0.32	15	1.8
S95	115A 118A	SS 2 RCCP CL IV	18	100	1.00	100	12.0
S96	115 115A	SS 2 RCCP CL IV	15	19	1.00	15	1.8
S96A	115B 115A	SS 2 RCCP CL IV	12	37	1.00	37	4.9
S96B	116 115A	SS 2 RCCP CL IV	12	39	1.00	30	4.0
S97	117 118	SS 2 RCCP CL IV	15	6	1.00	2	0.3
S97A	EX 118A	SS 2 RCCP CL IV	12	82	0.44	82	15.9
S98	118 118A	SS 2 RCCP CL IV	15	13	1.00	13	1.6
S98A	118A 119	SS 2 RCCP CL IV	18	24	1.00	24	5.9
S99	119 120	SS 2 RCCP CL IV	18	12	1.00	2	0.5
S100	120 121	SS 2 RCCP CL IV	18	12	1.00	2	0.6
S101	121 122	SS 2 RCCP CL IV	24	42	1.00	42	16.1
S102	122 123	SS 2 RCCP CL IV	24	11	1.00	2	1.0
S103	113 113A	SS 1 RCCP CL IV	48 EQ ELL	417	0.15	12	32.8



F.A.P. COUNTY SECTION	99-00243-00-PV	COUNTY	KANE	TOTAL SHEET	268	92
ROUTE	336	CONTRACT NO.	83782	UTILITY PLAN STA.	31+50 TO STA. 36+50	F.H.W.A. REG.5 ILLINOIS PROJECT F-0336(00B)

MATCH LINE STA. 36+50 SHEET NO. 93

MATCH LINE STA. 31+50 SHEET NO. 91