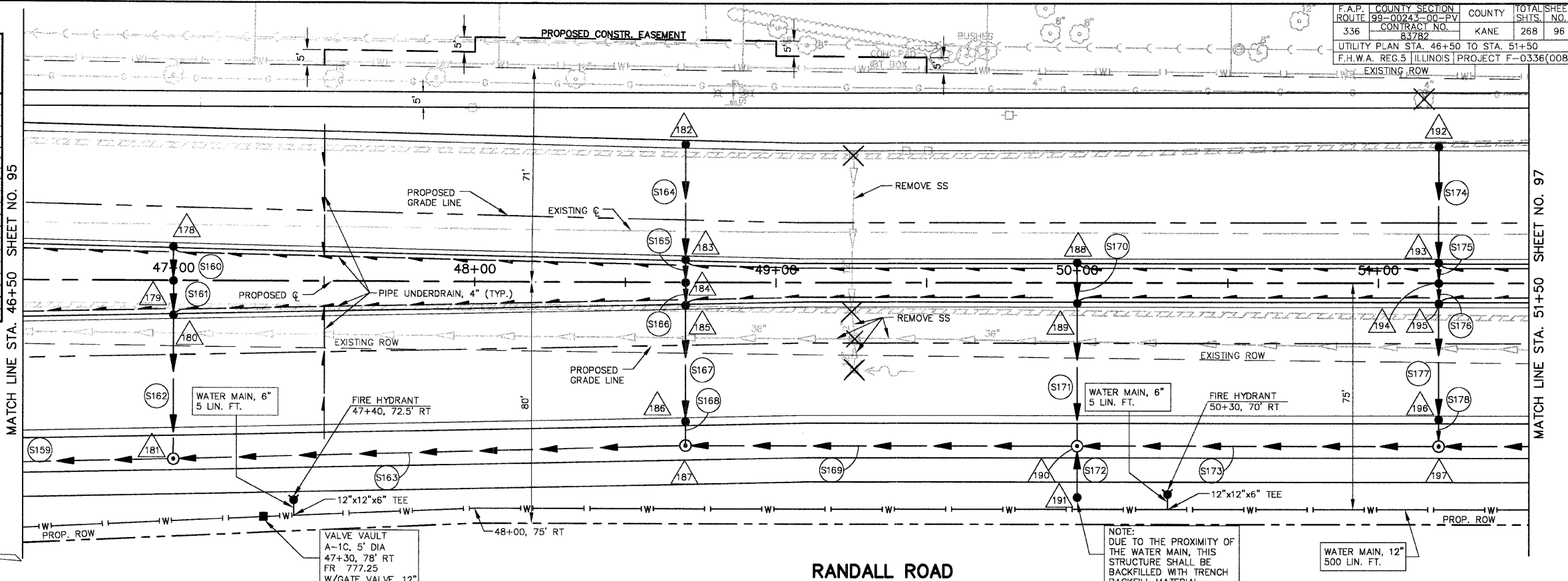


DRAINAGE STRUCTURE TABLE STA. 46+50 TO STA. 51+50

NO.	STA.	OFFSET	STRUCTURE TYPE/SIZE	FRAME & GRATE	RIM ELEV EPI/FR	INVERT (N)	INVERT (S)	INVERT (E)	INVERT (W)
178	47+00	12.64' LT	A 4	11V	778.51				774.51
179	47+00	CL	A 4	8	778.73			774.39	774.28
180	47+00	12.64' RT	A 4	11V	778.51			774.17	774.07
181	47+00	59' RT	A 5	1C	779.00	763.35	763.45	773.61	
182	48+70	44.87' LT	A 4	24	781.18				777.18
183	48+70	8.87' LT	A 4	11V	781.42			778.81	778.71
184	48+70	CL	A 4	8	781.70			778.63	778.53
185	48+70	8.87' RT	A 4	11V	781.42			778.45	778.35
186	48+70	44.87' RT	A 4	24	781.18			778.98	778.88
187	48+70	55' RT	A 5	1C	781.50	764.98	765.08	775.75	
188	50+00	8' LT	A 4	11V	782.99				778.99
189	50+00	8' RT	A 4	11V	782.99			778.84	778.74
190	50+00	54' RT	A 5	1C	783.00	766.25	766.35	778.28	777.40
191	50+00	71' RT	C 2	8	781.60				777.57
192	51+20	44' LT	A 4	24	783.56				779.56
193	51+20	8' LT	A 4	11V	783.80			779.19	779.09
194	51+20	CL	A 4	8	784.10			779.02	778.92
195	51+20	8' RT	A 4	11V	783.80			778.85	778.75
196	51+20	44' RT	A 4	24	783.56			778.38	778.28
197	51+20	54' RT	A 5	1C	784.15	767.43	767.53	778.15	



SCALE: 1" = 20'

PIPE TABLE STA. 46+50 TO STA. 51+50

PIPE NO.	LOCATION FROM STR #	LOCATION TO STR #	DESCRIPTION	DIA (IN)	L (FT)	S (%)	TRENCH BACKFILL VOL (CY)
S159	181	177	SS 3 RCCP CL IV	42	80	0.90	80
S160	178	179	SS 2 RCCP CL IV	12	12	1.00	2
S161	179	180	SS 2 RCCP CL IV	12	12	1.00	2
S162	180	181	SS 2 RCCP CL IV	12	46	1.00	41
S163	187	181	SS 3 RCCP CL IV	42	170	0.90	170
S164	182	183	SS 2 RCCP CL IV	12	37	1.00	37
S165	183	184	SS 2 RCCP CL IV	12	8	1.00	2
S166	184	185	SS 2 RCCP CL IV	12	8	1.00	2
S167	185	186	SS 2 RCCP CL IV	12	37	1.00	37
S168	186	187	SS 2 RCCP CL IV	12	9	1.44	2
S169	187	188	SS 3 RCCP CL IV	42	130	0.90	130
S170	188	189	SS 1 RCCP CL IV	12	15	1.00	4
S171	189	190	SS 2 RCCP CL IV	12	46	1.00	41
S172	191	190	SS 2 RCCP CL IV	12	17	1.00	12
O' RING							
S173	197	190	SS 3 RCCP CL IV	42	120	0.90	120
S174	192	193	SS 2 RCCP CL IV	12	37	1.00	37
S175	193	194	SS 2 RCCP CL IV	12	7	1.00	2
S176	194	195	SS 2 RCCP CL IV	12	7	1.00	2
S177	195	196	SS 2 RCCP CL IV	12	37	1.00	37
S178	196	197	SS 2 RCCP CL IV	12	9	1.44	2

