

| | | | |
|---|----------------|--------|--------------|
| F.A.P. ROUTE | COUNTY SECTION | COUNTY | TOTAL SHEETS |
| 336 | 99-00243-00-PV | KANE | 268 |
| CONTRACT NO. 83782 | | | 123 |
| TEMPORARY TRAFFIC SIGNAL INSTALLATION | | | |
| F.H.W.A. REG.5 ILLINOIS PROJECT F-0336(00B) | | | |

PROPOSED TEMPORARY TRAFFIC SIGNAL LEGEND

- ▲ TEMPORARY TRAFFIC SIGNAL HEAD SPAN WIRE MOUNTED ORIGINAL LOCATION
- ▼ TEMPORARY TRAFFIC SIGNAL HEAD SPAN WIRE MOUNTED SECONDARY LOCATION
- ⊗ TEMPORARY WOOD POLE (CLASS 5 OR BETTER) 45 FOOT (13.7m) MIN.
- ⊠ TEMPORARY CONTROLLER CABINET
- TEMPORARY SPAN WIRE, TETHER WIRE, AND CABLE
- ⊕ TEMPORARY SERVICE INSTALLATION
- TEMPORARY PEDESTRIAN SIGNAL HEAD, BRACKET MOUNTED
- ⊙ MACHINE VISION PROCESSOR (MVP)
- ⊙ PEDESTRIAN PUSHBUTTON DETECTOR
- ⊙ EMERGENCY VEHICLE LIGHT DETECTOR
- ⊙ CONFIRMATION BEACON
- ⊙ TEMPORARY LUMINAIRE, SODIUM VAPOR, HORIZONTAL MOUNT, 400W AND 20' ARM
- VEHICLE DETECTOR, INDUCTION LOOP
- G.S. CONDUIT IN TRENCH (T) OR PUSHED (P) HANDHOLE
- ⊠ HEAVY DUTY HANDHOLE
- CT COMMON TRENCH
- UD UNIT DUCT
- FOCUS AREAS FOR VIDEO DETECTION
- ⊙ YAGI ANTENNA

EXISTING EQUIPMENT TO BE REMOVED LEGEND

- ▲ EXISTING SIGNAL HEAD TO BE REMOVED
- EXISTING SERVICE INSTALLATION TO BE REMOVED
- EXISTING SIGNAL POST AND FOUNDATION TO BE REMOVED
- ⊠ EXISTING ALUMINUM MAST ARM POLE AND FOUNDATION TO BE REMOVED
- ⊠ EXISTING CONTROLLER AND FOUNDATION TO BE REMOVED
- ⊠ EXISTING HANDHOLE TO BE REMOVED
- ⊠ EXISTING PEDESTRIAN SIGNAL HEAD TO BE REMOVED
- ⊙ EXISTING PEDESTRIAN PUSHBUTTON TO BE REMOVED
- ⊙ EMERGENCY VEHICLE LIGHT DETECTOR TO BE REMOVED
- ⊙ CONFIRMATION BEACON TO BE REMOVED
- ⊠ EXISTING HEAVY-DUTY HANDHOLE TO BE REMOVED
- EXISTING STEEL MAST ARM POLE AND FOUNDATION TO BE REMOVED
- ⊠ EXISTING COMBINATION STEEL MAST ARM POLE AND FOUNDATION TO BE REMOVED

NOTE: EXISTING SIGNAL CONDUITS, LOOP DETECTORS AND MAGNETIC DETECTORS SHALL BE ABANDONED.

SCALE: 1" = 20'

1 EACH REMOVE EXISTING TRAFFIC SIGNAL EQUIPMENT

THE FOLLOWING EXISTING TRAFFIC SIGNAL EQUIPMENT SHALL BE REMOVED BY THE CONTRACTOR AND SHALL REMAIN THE PROPERTY OF THE AGENCY LISTED BELOW. THE CONTRACTOR SHALL SAFELY STORE AND ARRANGE FOR PICK UP OF ALL EQUIPMENT TO BE RETURNED TO THE LISTED AGENCY AS PER THE TRAFFIC SIGNAL SPECIFICATIONS.

AGENCY: KANE COUNTY D.O.T.

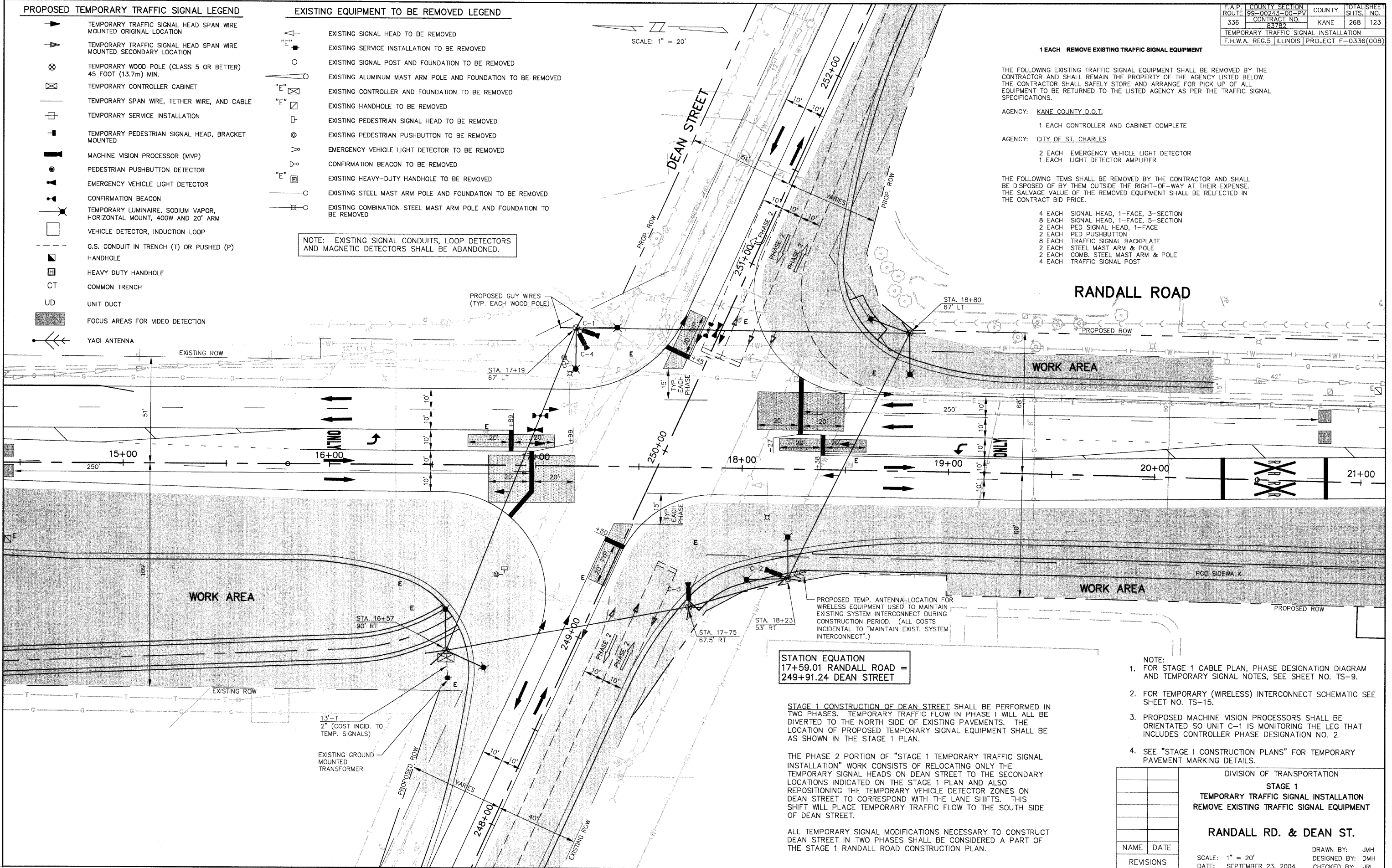
1 EACH CONTROLLER AND CABINET COMPLETE

AGENCY: CITY OF ST. CHARLES

2 EACH EMERGENCY VEHICLE LIGHT DETECTOR
1 EACH LIGHT DETECTOR AMPLIFIER

THE FOLLOWING ITEMS SHALL BE REMOVED BY THE CONTRACTOR AND SHALL BE DISPOSED OF BY THEM OUTSIDE THE RIGHT-OF-WAY AT THEIR EXPENSE. THE SALVAGE VALUE OF THE REMOVED EQUIPMENT SHALL BE REFLECTED IN THE CONTRACT BID PRICE.

4 EACH SIGNAL HEAD, 1-FACE, 3-SECTION
8 EACH SIGNAL HEAD, 1-FACE, 5-SECTION
2 EACH PED SIGNAL HEAD, 1-FACE
2 EACH PED PUSHBUTTON
8 EACH TRAFFIC SIGNAL BACKPLATE
2 EACH STEEL MAST ARM & POLE
2 EACH COMB. STEEL MAST ARM & POLE
4 EACH TRAFFIC SIGNAL POST



STATION EQUATION
17+59.01 RANDALL ROAD =
249+91.24 DEAN STREET

STAGE 1 CONSTRUCTION OF DEAN STREET SHALL BE PERFORMED IN TWO PHASES. TEMPORARY TRAFFIC FLOW IN PHASE 1 WILL ALL BE DIVERTED TO THE NORTH SIDE OF EXISTING PAVEMENTS. THE LOCATION OF PROPOSED TEMPORARY SIGNAL EQUIPMENT SHALL BE AS SHOWN IN THE STAGE 1 PLAN.

THE PHASE 2 PORTION OF "STAGE 1 TEMPORARY TRAFFIC SIGNAL INSTALLATION" WORK CONSISTS OF RELOCATING ONLY THE TEMPORARY SIGNAL HEADS ON DEAN STREET TO THE SECONDARY LOCATIONS INDICATED ON THE STAGE 1 PLAN AND ALSO REPOSITIONING THE TEMPORARY VEHICLE DETECTOR ZONES ON DEAN STREET TO CORRESPOND WITH THE LANE SHIFTS. THIS SHIFT WILL PLACE TEMPORARY TRAFFIC FLOW TO THE SOUTH SIDE OF DEAN STREET.

ALL TEMPORARY SIGNAL MODIFICATIONS NECESSARY TO CONSTRUCT DEAN STREET IN TWO PHASES SHALL BE CONSIDERED A PART OF THE STAGE 1 RANDALL ROAD CONSTRUCTION PLAN.

- NOTE:
- FOR STAGE 1 CABLE PLAN, PHASE DESIGNATION DIAGRAM AND TEMPORARY SIGNAL NOTES, SEE SHEET NO. TS-9.
 - FOR TEMPORARY (WIRELESS) INTERCONNECT SCHEMATIC SEE SHEET NO. TS-15.
 - PROPOSED MACHINE VISION PROCESSORS SHALL BE ORIENTATED SO UNIT C-1 IS MONITORING THE LEG THAT INCLUDES CONTROLLER PHASE DESIGNATION NO. 2.
 - SEE "STAGE 1 CONSTRUCTION PLANS" FOR TEMPORARY PAVEMENT MARKING DETAILS.

| | |
|--|------------------|
| DIVISION OF TRANSPORTATION | |
| STAGE 1 | |
| TEMPORARY TRAFFIC SIGNAL INSTALLATION | |
| REMOVE EXISTING TRAFFIC SIGNAL EQUIPMENT | |
| RANDALL RD. & DEAN ST. | |
| NAME | DATE |
| REVISIONS | |
| SCALE: 1" = 20' | DRAWN BY: JMH |
| DATE: SEPTEMBER 23, 2004 | DESIGNED BY: DMH |
| | CHECKED BY: JRL |