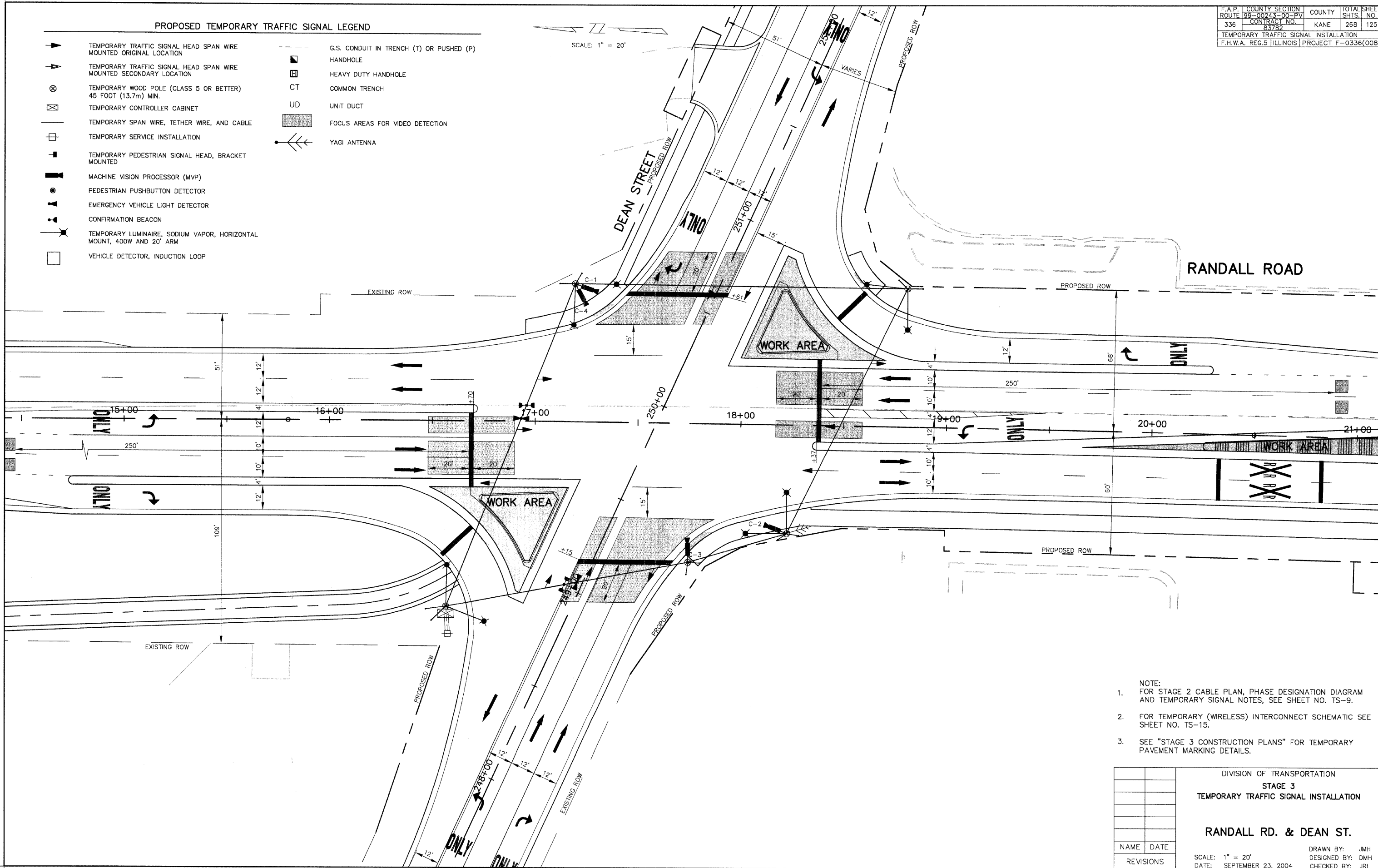


F.A.P. ROUTE	COUNTY SECTION	COUNTY	TOTAL SHEET
336	99-00243-00-PV	KANE	268
CONTRACT NO.		SHIS. NO.	
83782		125	
TEMPORARY TRAFFIC SIGNAL INSTALLATION			
F.H.W.A. REG.5 ILLINOIS PROJECT F-0336(008)			

**PROPOSED TEMPORARY TRAFFIC SIGNAL LEGEND**

- |   |   |     |  |
|---|---|-----|--|
| ▶ | TEMPORARY TRAFFIC SIGNAL HEAD SPAN WIRE MOUNTED ORIGINAL LOCATION     | --- | G.S. CONDUIT IN TRENCH (T) OR PUSHED (P) |
| ▶ | TEMPORARY TRAFFIC SIGNAL HEAD SPAN WIRE MOUNTED SECONDARY LOCATION    | ■   | HANDHOLE                                 |
| ⊗ | TEMPORARY WOOD POLE (CLASS 5 OR BETTER) 45 FOOT (13.7m) MIN.          | ▣   | HEAVY DUTY HANDHOLE                      |
| ⊠ | TEMPORARY CONTROLLER CABINET  | CT  | COMMON TRENCH                            |
| — | TEMPORARY SPAN WIRE, TETHER WIRE, AND CABLE                           | UD  | UNIT DUCT                                |
| □ | TEMPORARY SERVICE INSTALLATION  | ■   | FOCUS AREAS FOR VIDEO DETECTION          |
| — | TEMPORARY PEDESTRIAN SIGNAL HEAD, BRACKET MOUNTED                     | ⋈   | YAGI ANTENNA                             |
| — | MACHINE VISION PROCESSOR (MVP)  |     |  |
| ● | PEDESTRIAN PUSHBUTTON DETECTOR  |     |  |
| ▲ | EMERGENCY VEHICLE LIGHT DETECTOR                                      |     |  |
| ★ | CONFIRMATION BEACON   |     |  |
| — | TEMPORARY LUMINAIRE, SODIUM VAPOR, HORIZONTAL MOUNT, 400W AND 20' ARM |     |  |
| □ | VEHICLE DETECTOR, INDUCTION LOOP                                      |     |  |

SCALE: 1" = 20'



- NOTE:
- FOR STAGE 2 CABLE PLAN, PHASE DESIGNATION DIAGRAM AND TEMPORARY SIGNAL NOTES, SEE SHEET NO. TS-9.
  - FOR TEMPORARY (WIRELESS) INTERCONNECT SCHEMATIC SEE SHEET NO. TS-15.
  - SEE "STAGE 3 CONSTRUCTION PLANS" FOR TEMPORARY PAVEMENT MARKING DETAILS.

DIVISION OF TRANSPORTATION	
STAGE 3	
TEMPORARY TRAFFIC SIGNAL INSTALLATION	
RANDALL RD. & DEAN ST.	
NAME	DATE
REVISIONS	
SCALE: 1" = 20'	DATE: SEPTEMBER 23, 2004
DRAWN BY: JMH	DESIGNED BY: DMH
CHECKED BY: JRL	