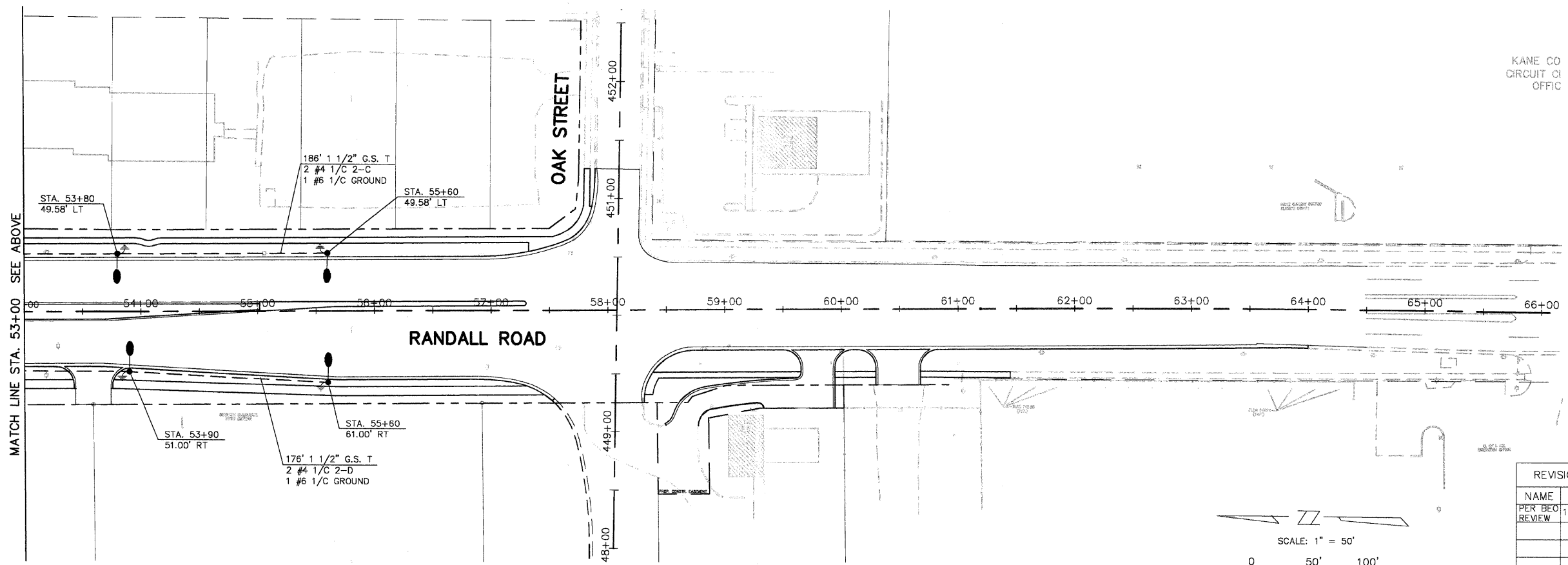
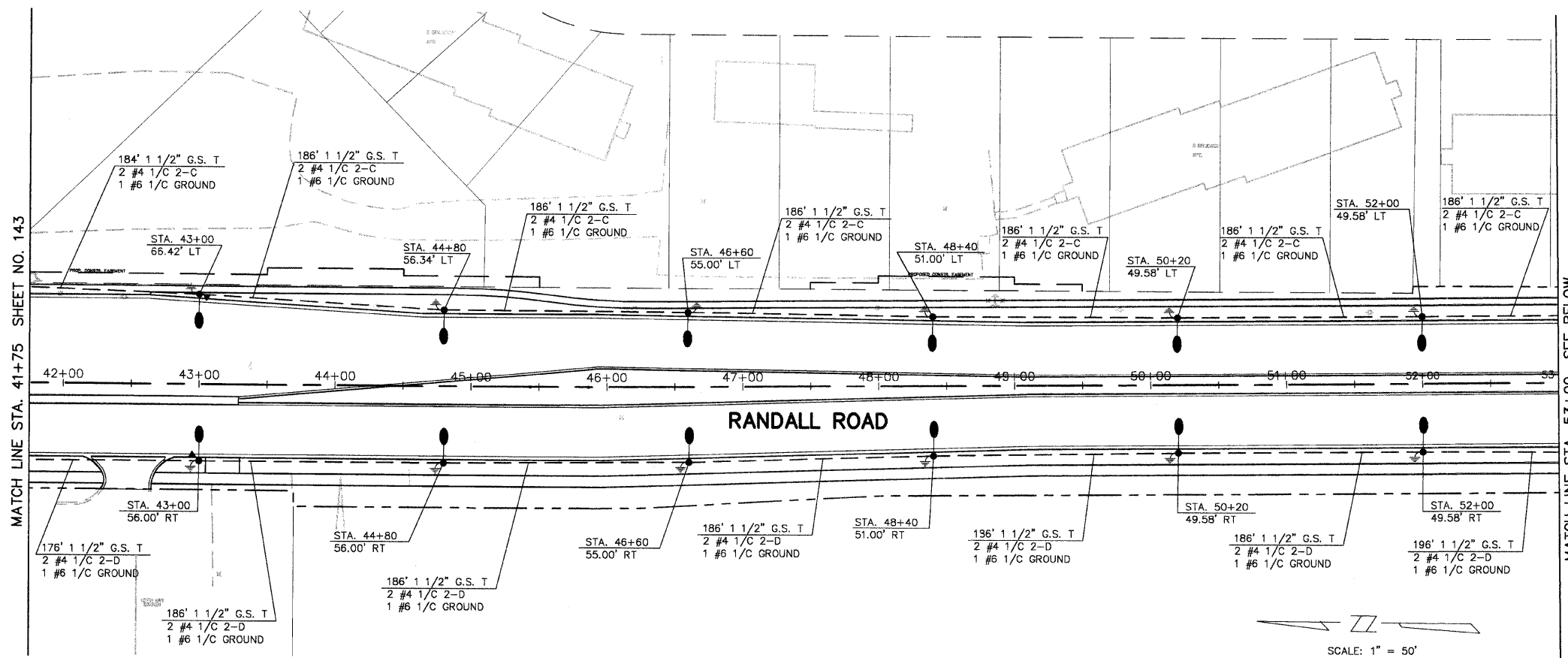


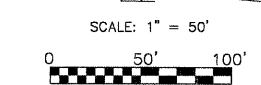
F.A.P. ROUTE	COUNTY SECTION	COUNTY	TOTAL SHEET
99-00243-00-PV		KANE	268 144
336	CONTRACT NO.		
	83782		
LIGHTING PLAN			
F.H.W.A. REG.5 ILLINOIS PROJECT F-0336(008)			



LEGEND

- PROPOSED LIGHT STANDARD WITH 310 WATT LUMINAIRE
- PROPOSED COMBINATION MAST ARM ASSEMBLY AND POLE WITH 400 WATT LUMINAIRE
- PROPOSED COMBINATION MAST ARM ASSEMBLY AND POLE WITH TWO LIGHTING MAST ARMS WITH 400 WATT LUMINAIRES
- PROPOSED LIGHTING CONTROLLER
- PROPOSED HANDHOLE
- GROUND ROD
- PROPOSED GFCI FESTOON OUTLET
- GALVANIZED STEEL CONDUIT IN TRENCH (T), IN COMMON TRENCH (CT), EMBEDDED (EM), OR PUSHED (P) OF THE SIZE SPECIFIED WITH THE NUMBER AND SIZE OF CABLES SPECIFIED. CONDUIT LENGTHS INCLUDE 3 FEET OF VERTICAL CONDUIT AT EACH LIGHT STANDARD.
- EXISTING LIGHT STANDARD
- EXISTING LIGHT STANDARD TO BE REMOVED

SCALE: 1" = 50'



KANE CO  
 CIRCUIT CI  
 OFFIC

REVISIONS	
NAME	DATE
PER BEO	10-7-04
REVIEW	

**STREET LIGHTING PLAN**

STATION 41+75 TO 57+00

**RANDALL ROAD**

SCALE: AS SHOWN  
 DATE: 5-26-04  
 DRAWN BY: JMH  
 CHECKED BY: DAY