

ELEVATION

See Sheet 3 of 9 for Stage Construction Details

NOTES

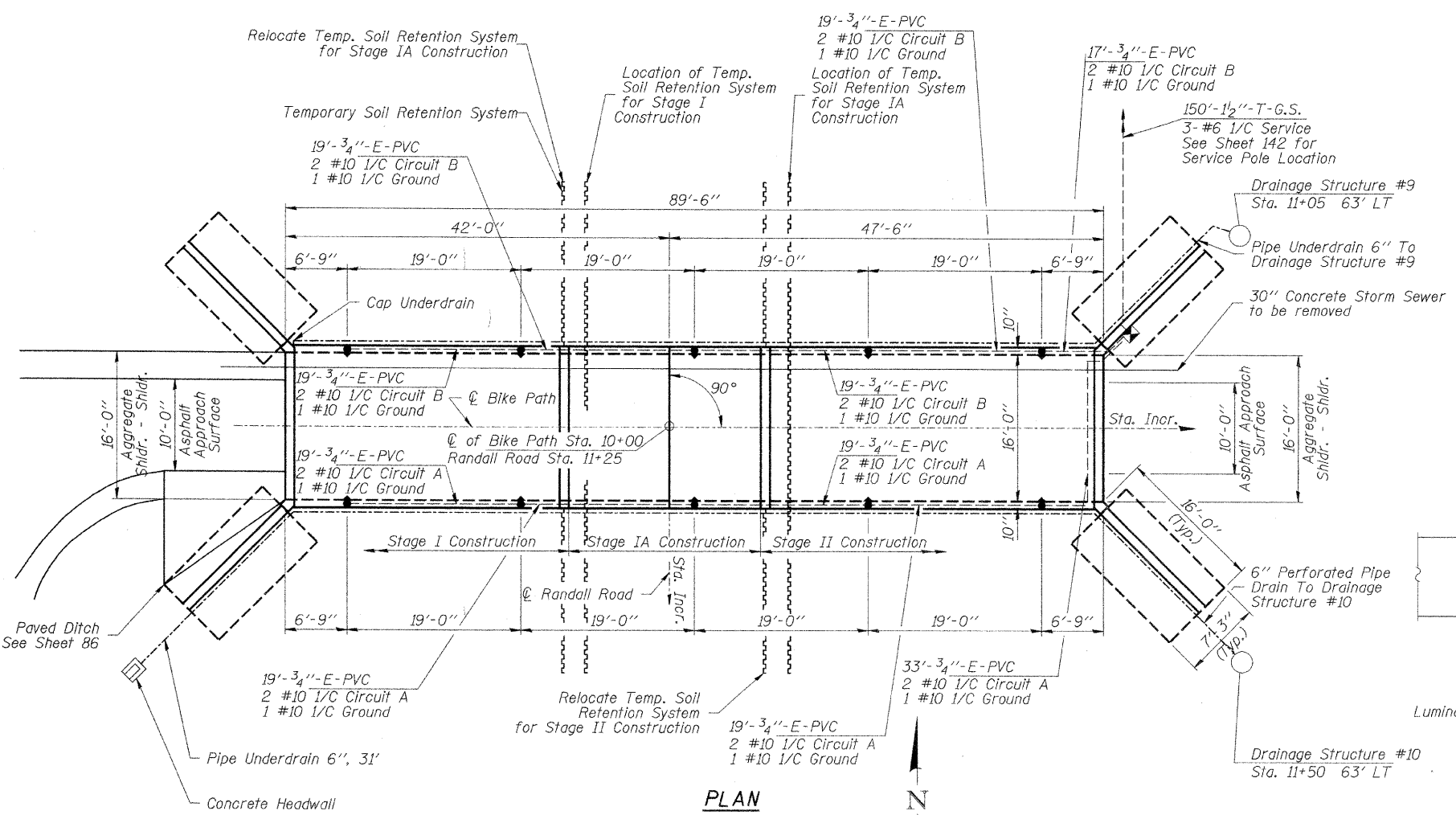
- Class SI Concrete shall be used throughout.
- Nonmetallic water seal used in the wingwall joints shall extend from the top of the footing to within 6" of the top of the headwall.
- Exposed edges shall be beveled 3/4".
- For backfilling and embankment, see Standard Specifications.
- Reinforcement bars shall conform to the requirements of AASHTO M-31.
- M-322 Grade 60.
- Boring logs are included in the special provisions.
- The bottom floor shall receive a broomed finish. (Cost included with Concrete Box Culverts.)
- All construction joints shall be bonded.
- Protective coating to be placed on all interior faces of culvert, exposed and top surface of all wingwalls, exposed face and top of both head walls.

LEGEND

- Polyester Junction Box, Embedded in Structure
- ▲ Luminaire, 70 Watt HPS, 120 Volt
- ⊠ Controller

23'-3/4"-E-PVC
2 #10 1/C Circuit A
1 #10 1/C Ground

Conduit-Length, Size, Type of Installation
A - Attached to Structure
T - In Trench
E - Embedded in Structure
And Material Specified with Cables as Specified.



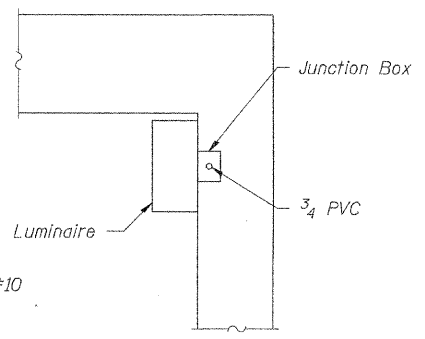
PLAN

PROFILE GRADE

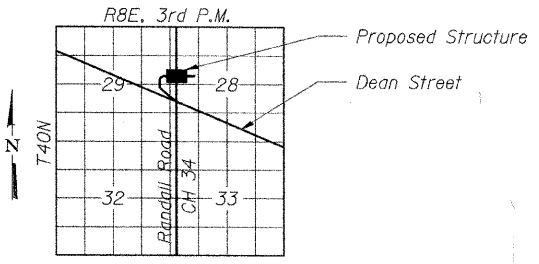
@ Bike Path

TOTAL BILL OF MATERIAL

ITEM	UNIT	TOTAL
Concrete Box Culverts	Cu. Yds.	254.0
Reinforcement Bars, Epoxy Coated	Lbs.	35,680
Pedestrian Railing	Foot	97
Pipe Handrail	Foot	170
Temporary Soil Retention System	Sq Ft	1,422
Electric Cable in Conduit, 600V (XLP-Type Use) 1/C No. 10	Foot	696
Electric Cable in Conduit, 600V (XLP-Type Use) 1/C No. 6	Foot	450
Trench and Backfill for Electrical Work	Foot	150
Conduit in Trench, 1 1/2" Galvanized Steel	Foot	150
Conduit Embedded in Structure, 3/4" PVC	Foot	202
Underpass Control Installation, Special	Each	1
Electric Service Installation	Each	1
Ground Rod	Each	1
Junction Box, Polyester, Embedded in Structure, 4"x4"x3"	Each	10
Underpass Luminaire, 70 Watt High Pressure Sodium Vapor	Each	10
Porous Granular Backfill, Special	Ton	3,675
Geocomposite Wall Drain	Sq Yd	265
Clear Protective Coating for Concrete	Sq Ft	4,835
Bar Splicers	Each	298
Geotechnical Fabric for Ground Stabilization	Sq Yd	96
Pipe Underdrains 6"	Foot	253
Concrete Headwall For Pipe Drains	Each	1



SECTION A-A



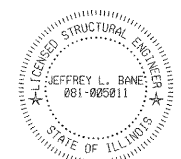
LOCATION SKETCH

DESIGN SPECIFICATIONS
2002 AASHTO

LOADING HS 20-44
Allow 50 psf. for future wearing surface

DESIGN STRESSES
FIELD UNITS
f'c = 3,500 psi
fy = 60,000 psi (Reinforcement)
fy = 50,000 psi (Sheet Piles)

I certify that to the best of my knowledge, information and belief, this culvert design is structurally adequate for the design loading shown on the plans. The design is an economical one for the style of structure and complies with requirements of the current "AASHTO Standard Specifications for Highway Bridges".



Expires 11-30-06

HLR

Rice, Berry and Associates
A Division of Hampton, Lenzini and Renwick, Inc.
Civil & Structural Engineers
801 S. Durkin Drive
Springfield, Illinois 62704
217-546-3400

Account Number: 03-05-0181-1
Date: 6-09-04

P.O. Box 1036
DuQuoin, Illinois 62832
618-790-4637

DESIGNED: P.S.L. CHECKED: J.L.B. DRAWN: D.S.S.

GENERAL PLAN AND ELEVATION
SECTION 99-00243-00-PV
BIKE PATH UNDER RANDALL ROAD
KANE COUNTY
STATION 11+25

ILLINOIS SURVEYOR NO. 5011

FEB 07 2005