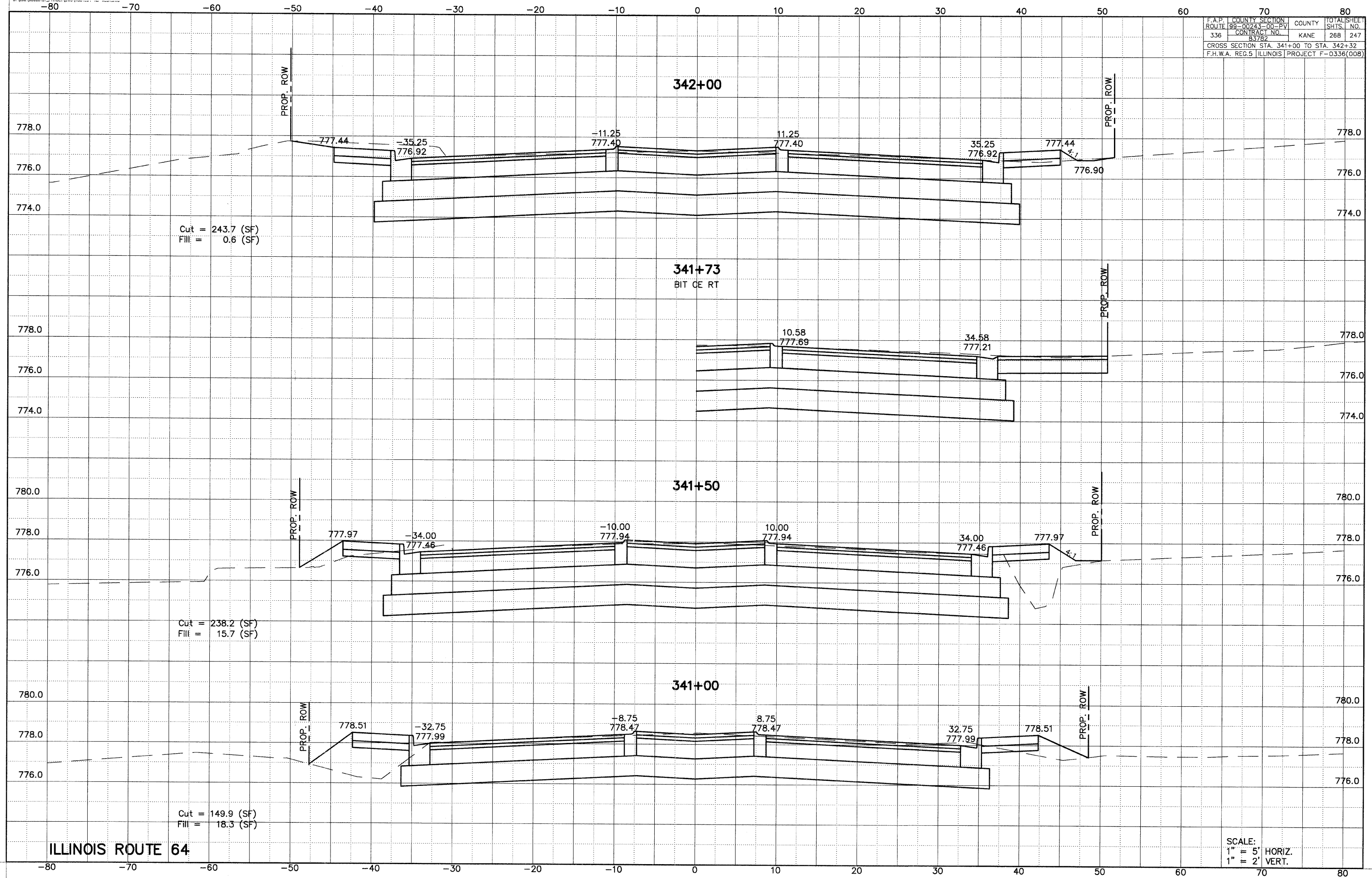


F.A.P. ROUTE	COUNTY	SECTION	COUNTY	TOTAL SHEETS
99-00243-00-EV	KANE	268	247	
336	CONTRACT NO.	83782		
CROSS SECTION STA. 341+00 TO STA. 342+32				
F.H.W.A. REG.5 ILLINOIS PROJECT F-0336(008)				



ILLINOIS ROUTE 64

SCALE:
1" = 5' HORIZ.
1" = 2' VERT.