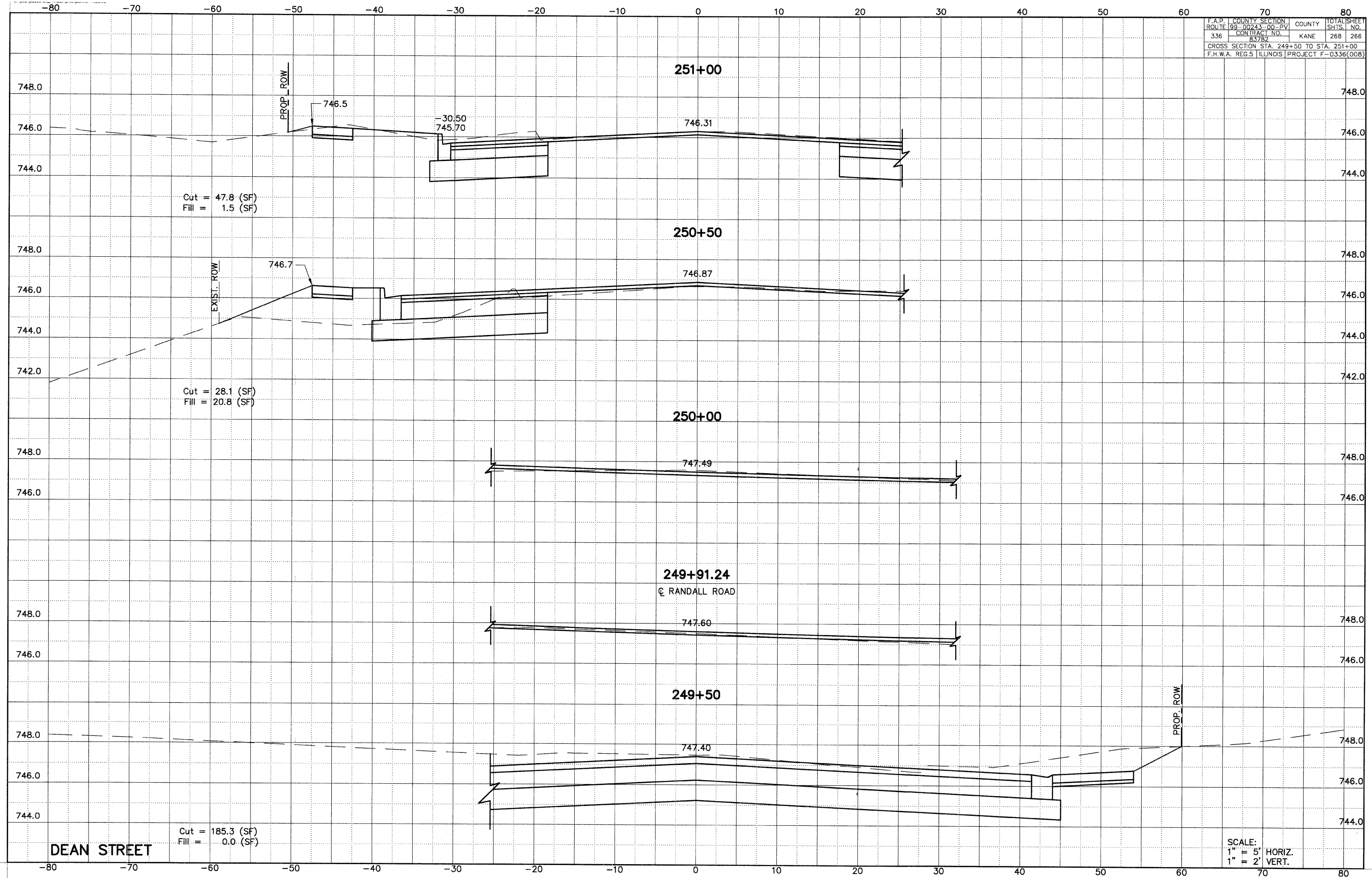


F.A.P.	COUNTY	SECTION	TOTAL SHEET
ROUTE 99-00243-00-PV	KANE		268
336	CONTRACT NO.	83782	266
CROSS SECTION STA. 249+50 TO STA. 251+00			
F.H.W.A. REG.5 ILLINOIS PROJECT F-0336(008)			



SCALE:
 1" = 5' HORIZ.
 1" = 2' VERT.