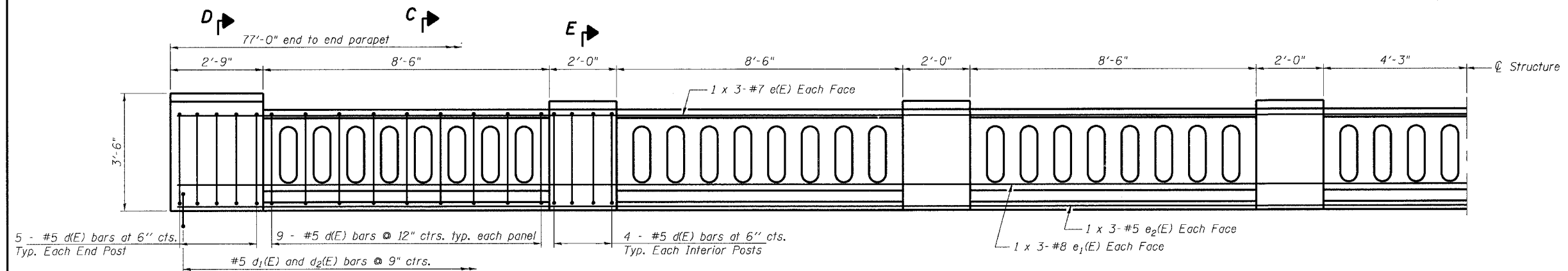


F.A.U. RTE.	SECTION	COUNTY	TOTAL SHEETS	SHEET NO.
266I	00-00095-II-BR	LAKE	28	14
SUPERSTRUCTURE DETAILS				
C-9-69-00	ILLINOIS			

CONTRACT NO.: 83789



5 - #5 d(E) bars at 6" cts. Typ. Each End Post

9 - #5 d(E) bars @ 12" ctrs. typ. each panel

4 - #5 d(E) bars at 6" cts. Typ. Each Interior Posts

1 x 3-#5 e2(E) Each Face  
1 x 3-#8 e1(E) Each Face

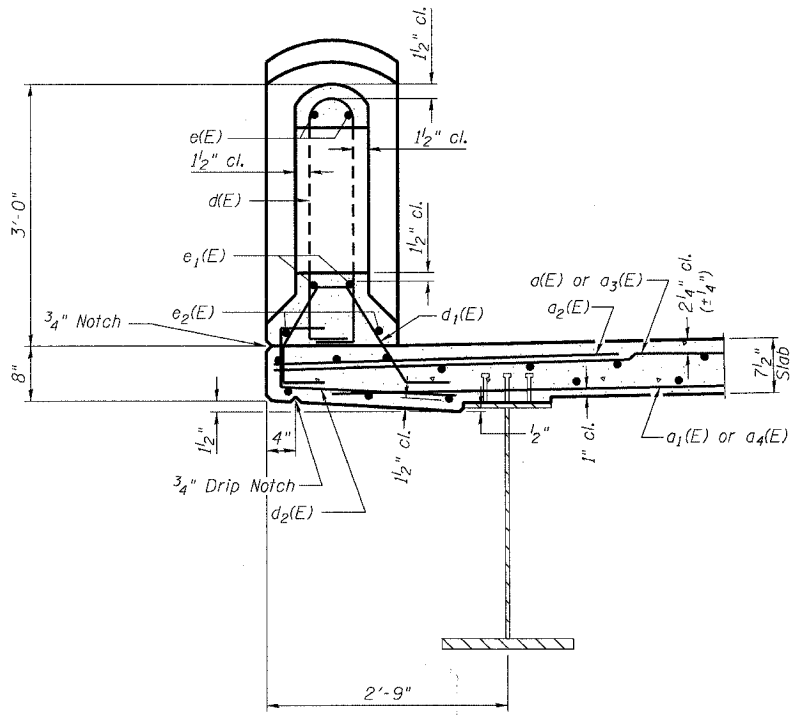
#5 d1(E) and d2(E) bars @ 9" ctrs.

**INSIDE HALF ELEVATION OF PARAPET**

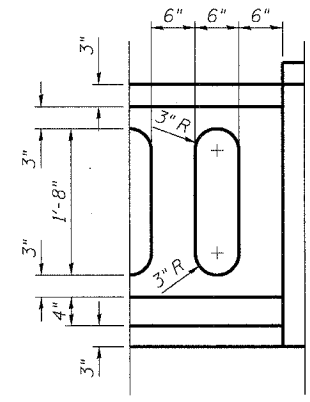
**MIN. BAR LAP**  
#5 bar = 2'-2"  
#7 bar = 3'-5"  
#8 bar = 4'-6"

**SUPERSTRUCTURE BILL OF MATERIAL**

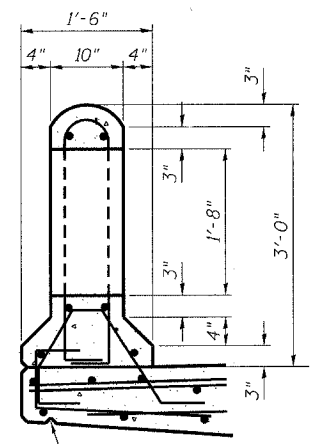
Bar	No.	Size	Length	Shape
a(E)	132	#5	25'-6"	—
a1(E)	93	#5	24'-9"	—
a2(E)	132	#6	4'-6"	—
a3(E)	132	#5	17'-0"	—
a4(E)	93	#5	16'-3"	—
b(E)	184	#5	20'-9"	—
b1(E)	108	#5	27'-0"	—
d(E)	194	#5	6'-10"	—
d1(E)	206	#5	3'-10"	—
d2(E)	206	#5	3'-2"	—
e(E)	12	#7	27'-11"	—
e1(E)	12	#8	28'-7"	—
e2(E)	12	#5	27'-1"	—
m(E)	4	#6	16'-3"	—
m1(E)	6	#6	17'-0"	—
m2(E)	20	#6	9'-0"	—
m3(E)	10	#6	6'-0"	—
m4(E)	4	#6	2'-5"	—
m5(E)	4	#6	24'-9"	—
m6(E)	6	#6	25'-6"	—
m7(E)	2	#6	1'-9"	—
m8(E)	2	#6	4'-0"	—
m9(E)	4	#6	6'-6"	—
m10(E)	4	#6	8'-9"	—
s(E)	84	#5	6'-11"	—
s1(E)	84	#4	10'-0"	—
v(E)	84	#5	3'-0"	—
Reinforcement Bars, Epoxy Coated			Pound	25,110
Concrete Superstructure			Cu. Yds.	112.3
Bar Splicers			Each	321
Concrete Handrail			Cu. Yd.	15.6
Protective Coat			Sq. Yd.	419



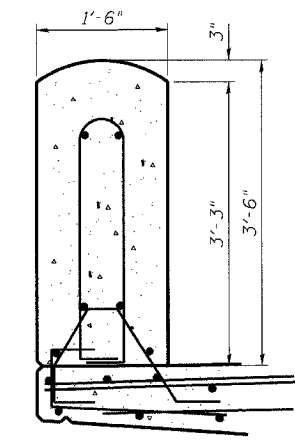
**SECTION B - B THRU PARAPET**  
(Showing Reinforcement)



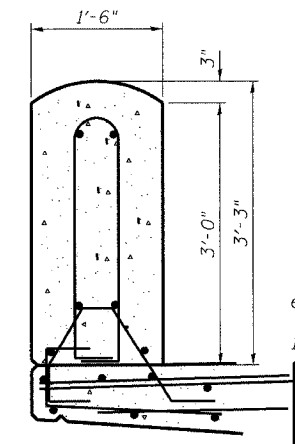
**TYPICAL RAIL OPENING**



**SECTION C - C**  
(Showing Concrete Dimensions)



**SECTION D - D**



**SECTION E - E**

**SUPERSTRUCTURE DETAILS**  
**HUNT CLUB ROAD OVER MILL CREEK**  
SECTION 00-00095-II-BR  
LAKE COUNTY  
STATION 116+60.00  
STRUCTURE NO. 049-3072

Reinforcement bars designated (E) shall be epoxy coated.  
Bars indicated thus 1 x 3-#5 etc. indicates 1 line of bars with 3 lengths per line.