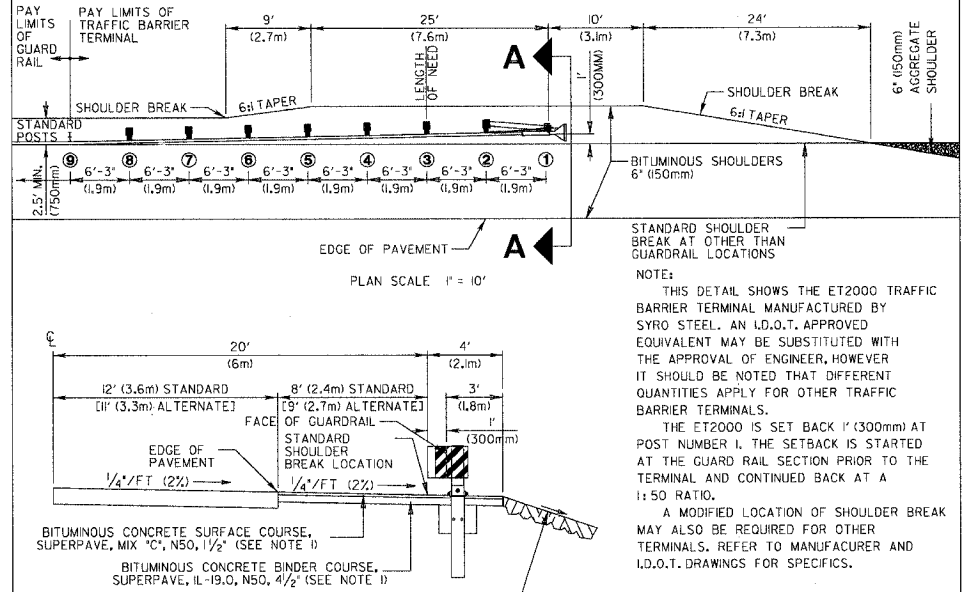


**TRIANGULAR SILT DIKE INSTALLATION FOR ROADWAY DITCH OR DRAINAGE DITCH**

APPROVED BY: G. N. WESNER  
DATE: JULY 23, 1999

REVISIONS	DATE
DUAL DIMENSIONS	10/23/02

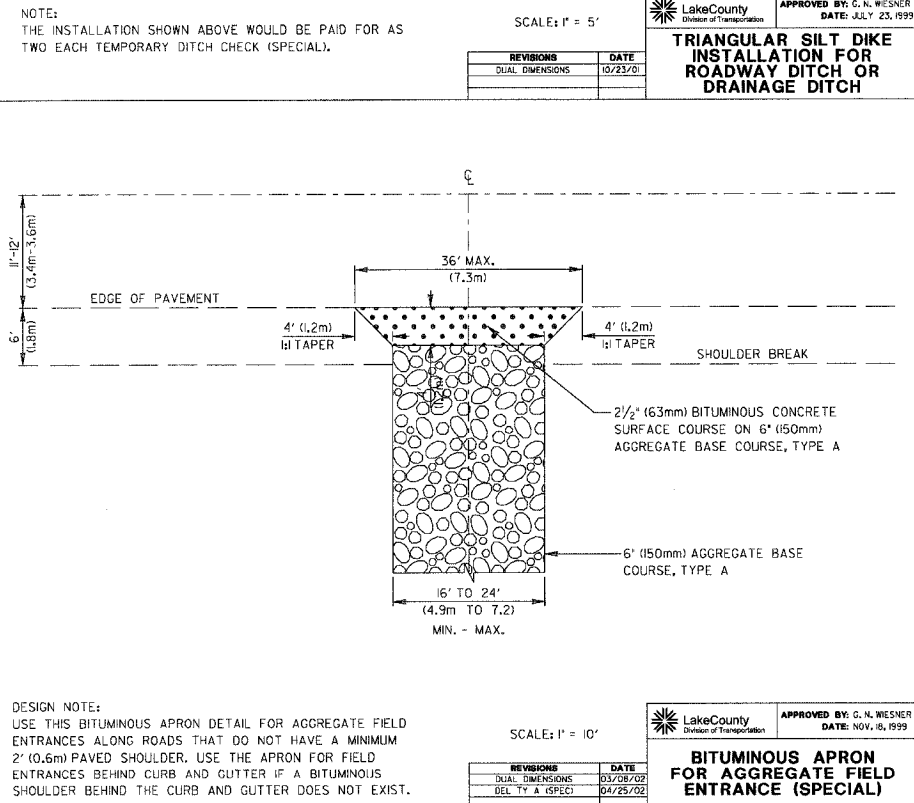


**SHOULDER BREAK AT TRAFFIC BARRIER TERMINAL, TYPE 1 SPECIAL**

APPROVED BY: G. N. WESNER  
DATE: AUG. 5, 1999

REVISIONS	DATE
DUAL DIMENSIONS	02/22/02
SUPERPAVE	07/03/04

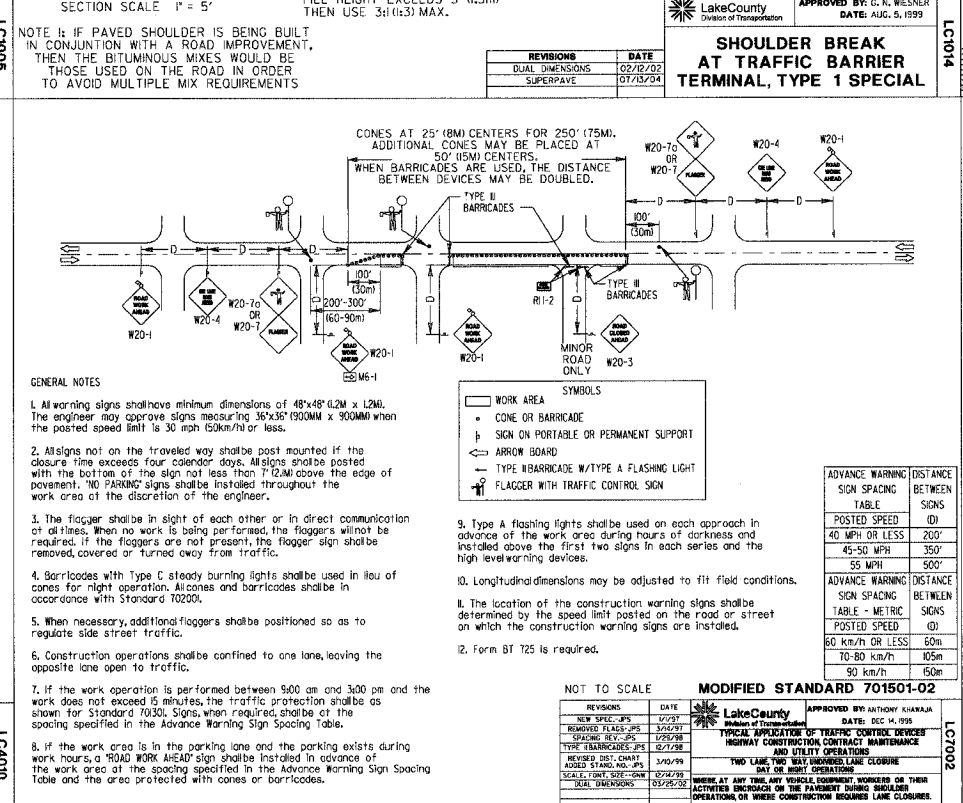
REVISIONS	DATE
DUAL DIMENSIONS	02/22/02
NUMBER & TITLE	07/08/04



**BITUMINOUS APRON FOR AGGREGATE FIELD ENTRANCE (SPECIAL)**

APPROVED BY: G. N. WESNER  
DATE: NOV. 16, 1999

REVISIONS	DATE
DUAL DIMENSIONS	03/26/02
DEL. TV & SPECI.	04/25/02

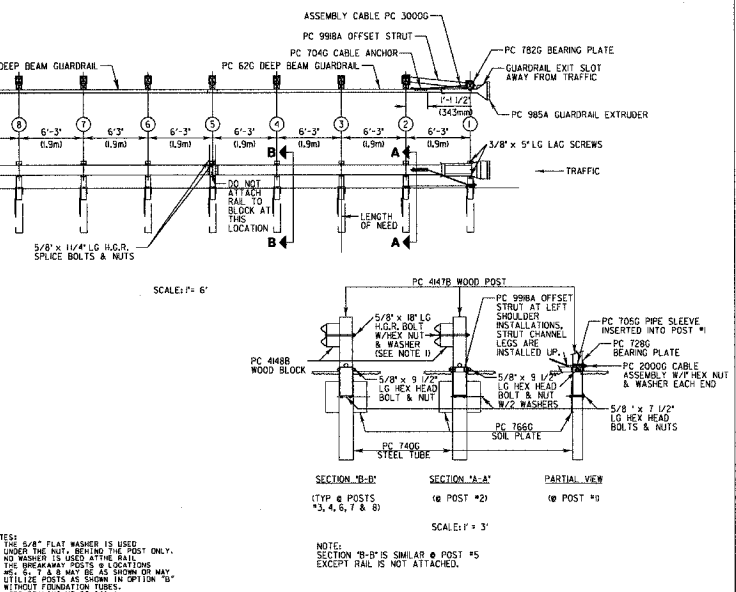


**MODIFIED STANDARD 701501-02**

APPROVED BY: ANTHONY KHARAKA  
DATE: DEC. 4, 1999

REVISIONS	DATE
DUAL DIMENSIONS	03/29/02

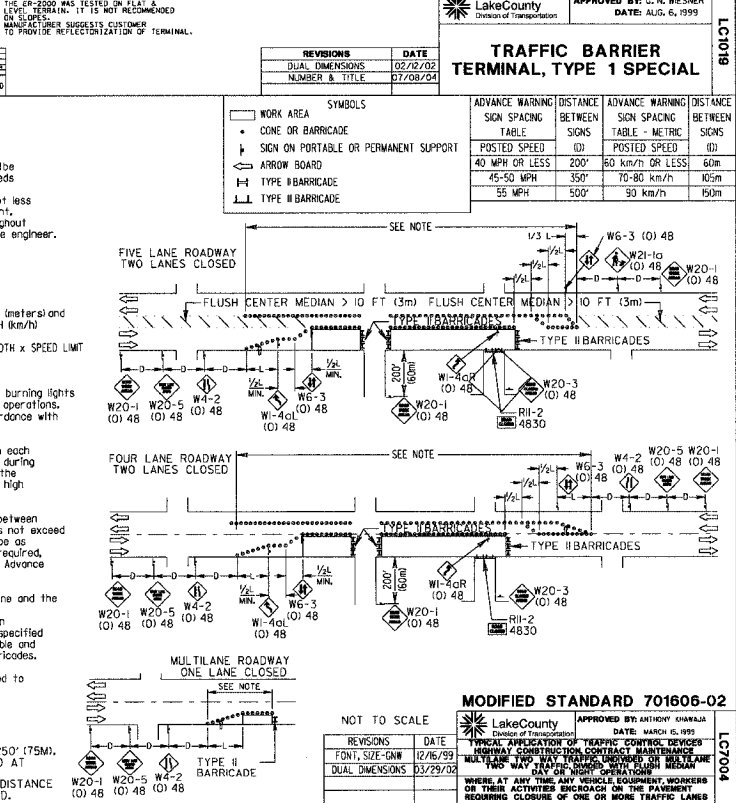
REVISIONS	DATE
DUAL DIMENSIONS	03/29/02



**TRAFFIC BARRIER TERMINAL, TYPE 1 SPECIAL**

APPROVED BY: G. N. WESNER  
DATE: AUG. 6, 1999

REVISIONS	DATE
DUAL DIMENSIONS	02/22/02
NUMBER & TITLE	07/08/04



**MODIFIED STANDARD 701606-02**

APPROVED BY: ANTHONY KHARAKA  
DATE: DEC. 4, 1999

REVISIONS	DATE
DUAL DIMENSIONS	03/29/02