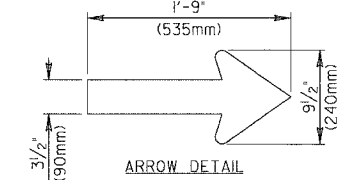
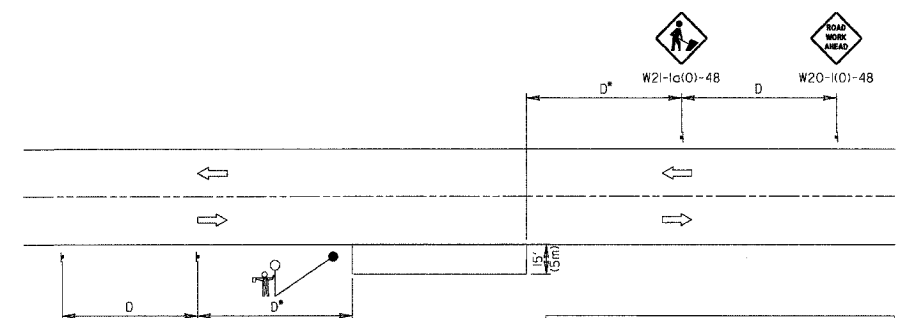


GENERAL NOTES

- 1) Direction Indicator Barricades shall be constructed from non-metallic Type II barricades meeting the requirements of Article 702.03 (e) of the Standard Specifications.
- 2) The Direction Indicator Barricades shall be equipped with Type C steady burning lights if used to channelize traffic during the hours of darkness.
- 3) The reflective sheeting for the top panel shall be Type AZ fluorescent orange. The diagonal panels shall have orange and white Type A or better reflective sheeting.



REVISIONS	DATE	APPROVED BY:	DATE:
1	4/16/02	ANTHONY KHARAJA	JAN 27, 2008
LAKELAND COUNTY			
TYPICAL APPLICATION OF TRAFFIC CONTROL DEVICES			
HIGHWAY CONSTRUCTION CONTRACT MAINTENANCE			
DIRECTION INDICATOR BARRICADES			
LC7008			



POSTED SPEED LIMIT	DISTANCE BETWEEN SIGNS 'D'
40 MPH or less	200 FT. (60 m)
45-50 MPH	350 FT. (105 m)
55 MPH	500 FT. (150 m)

GENERAL NOTES

This special detail is used at any time, any vehicle, equipment, workers or their activities require a stationary, intermittent or continuous moving operation within 15 feet (5 m) of the traffic lane, where the average speed is 1mph (2 km) or less.

Minimum distance 'D' is shown in the Advance Warning Sign Spacing Table. If the work is a moving operation, the maximum distance 'D' may be extended to 1/2 the length required for one normal working day's operation or 4 miles (6.4 km), whichever is less.

SYMBOLS

WORK AREA

SIGN ON PORTABLE OR PERMANENT SUPPORT

FLAGGER WITH TRAFFIC CONTROL SIGN WHEN REQUIRED

REVISIONS	DATE	APPROVED BY:	DATE:
LAKELAND COUNTY			
TYPICAL APPLICATION OF TRAFFIC CONTROL DEVICES			
HIGHWAY CONSTRUCTION CONTRACT MAINTENANCE			
AND UTILITY OPERATIONS			
TWO LANE TWO WAY OFF-ROAD OPERATIONS DAY ONLY OPERATIONS			
LC7008			

REVISIONS	NAME	DATE

ILLINOIS DEPARTMENT OF TRANSPORTATION

DETAILS

SCALE: VERT. N.T.S.
HORIZ. N.T.S.

DATE

DRAWN BY: AJP
CHECKED BY: CRF