

F.A. RTE.	SECTION	COUNTY	TOTAL SHEETS	SHEET NO.
1419	04-00239-00-TL	COOK	34	20
STA.		TO STA.		
FED. ROAD DIST. NO.		ILLINOIS FED. AID PROJECT		

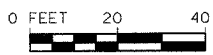
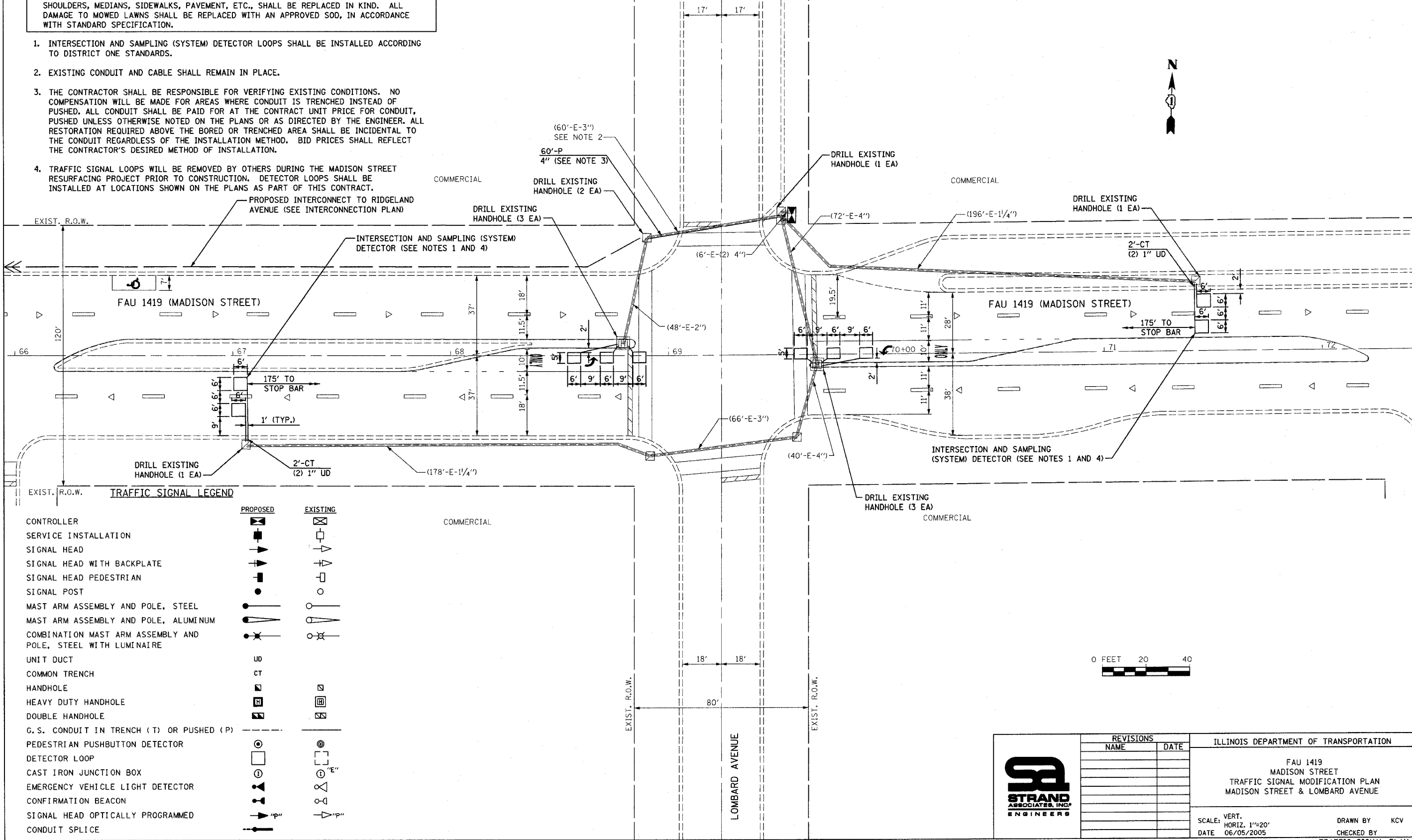
83792

RESTORATION OF WORK AREA

RESTORATION OF THE TRAFFIC SIGNAL WORK AREA SHALL BE INCIDENTAL TO THE RELATED PAY ITEM SUCH AS FOUNDATION, CONDUIT, HANDHOLE, TRENCH AND BACKFILL, ETC., AND NO EXTRA COMPENSATION SHALL BE ALLOWED. ALL ROADWAY SURFACES SUCH AS SHOULDERS, MEDIANS, SIDEWALKS, PAVEMENT, ETC., SHALL BE REPLACED IN KIND. ALL DAMAGE TO MOWED LAWNS SHALL BE REPLACED WITH AN APPROVED SOD, IN ACCORDANCE WITH STANDARD SPECIFICATION.

THE TRAFFIC SIGNAL CONTROL EQUIPMENT FOR THIS PROJECT SHALL BE "ECONOLITE" TO MATCH THE EXISTING ADJACENT SYSTEM

- INTERSECTION AND SAMPLING (SYSTEM) DETECTOR LOOPS SHALL BE INSTALLED ACCORDING TO DISTRICT ONE STANDARDS.
- EXISTING CONDUIT AND CABLE SHALL REMAIN IN PLACE.
- THE CONTRACTOR SHALL BE RESPONSIBLE FOR VERIFYING EXISTING CONDITIONS. NO COMPENSATION WILL BE MADE FOR AREAS WHERE CONDUIT IS TRENCHED INSTEAD OF PUSHED. ALL CONDUIT SHALL BE PAID FOR AT THE CONTRACT UNIT PRICE FOR CONDUIT, PUSHED UNLESS OTHERWISE NOTED ON THE PLANS OR AS DIRECTED BY THE ENGINEER. ALL RESTORATION REQUIRED ABOVE THE BORED OR TRENCHED AREA SHALL BE INCIDENTAL TO THE CONDUIT REGARDLESS OF THE INSTALLATION METHOD. BID PRICES SHALL REFLECT THE CONTRACTOR'S DESIRED METHOD OF INSTALLATION.
- TRAFFIC SIGNAL LOOPS WILL BE REMOVED BY OTHERS DURING THE MADISON STREET RESURFACING PROJECT PRIOR TO CONSTRUCTION. DETECTOR LOOPS SHALL BE INSTALLED AT LOCATIONS SHOWN ON THE PLANS AS PART OF THIS CONTRACT.



TRAFFIC SIGNAL LEGEND

	PROPOSED	EXISTING
CONTROLLER		
SERVICE INSTALLATION		
SIGNAL HEAD		
SIGNAL HEAD WITH BACKPLATE		
SIGNAL HEAD PEDESTRIAN		
SIGNAL POST		
MAST ARM ASSEMBLY AND POLE, STEEL		
MAST ARM ASSEMBLY AND POLE, ALUMINUM		
COMBINATION MAST ARM ASSEMBLY AND POLE, STEEL WITH LUMINAIRE		
UNIT DUCT	UD	
COMMON TRENCH	CT	
HANDHOLE		
HEAVY DUTY HANDHOLE		
DOUBLE HANDHOLE		
G.S. CONDUIT IN TRENCH (T) OR PUSHED (P)	T / P	
PEDESTRIAN PUSHBUTTON DETECTOR		
DETECTOR LOOP		
CAST IRON JUNCTION BOX		
EMERGENCY VEHICLE LIGHT DETECTOR		
CONFIRMATION BEACON		
SIGNAL HEAD OPTICALLY PROGRAMMED		
CONDUIT SPLICE		



REVISIONS	
NAME	DATE

ILLINOIS DEPARTMENT OF TRANSPORTATION

FAU 1419
MADISON STREET
TRAFFIC SIGNAL MODIFICATION PLAN
MADISON STREET & LOMBARD AVENUE

SCALE: VERT. 1"=20'
HORIZ. 1"=20'
DATE: 06/05/2005

DRAWN BY: KCV
CHECKED BY: [Signature]
TRAFFIC SIGNAL PLAN

TIME: 10:52:09 PM

DATE: 06/05/2005

FILENAME: s:\@san\751-800\7841432\micross\modernization\lombard.dgn