

PLAN PREPARATION ENGINEER STEVEN W. MEGGINSON, P.E., S.E. (217) 546-3400

FEDERAL AID PROGRAM ENGINEER CHARLES RIDDLE, P.E. (847) 705-4406

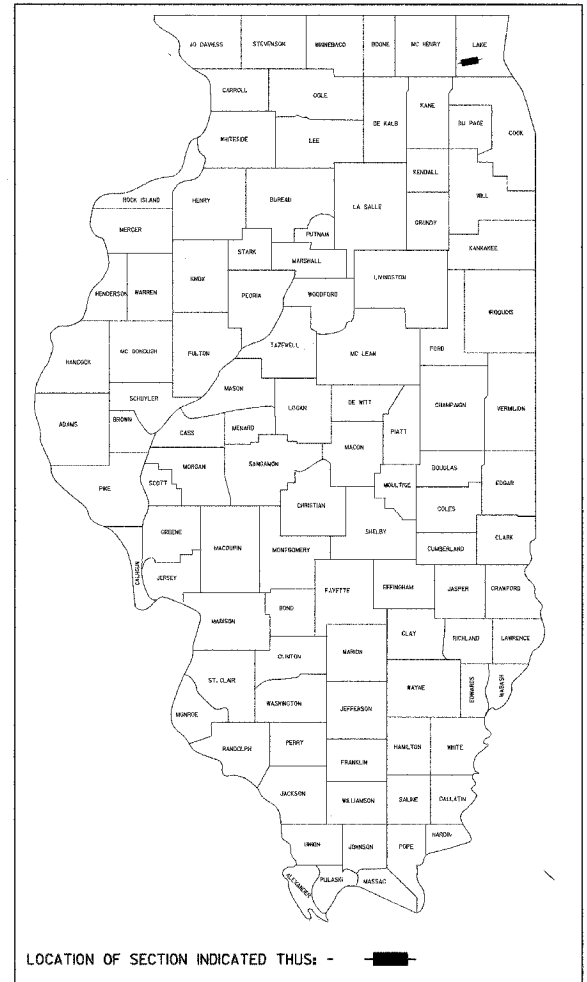
ROUTE NO. F.A.U. 3706	SECTION 00-00068 -07-BR	COUNTY LAKE	SHEET 50	PIECE 1
FED. ROAD DIST. NO.		ILLINOIS	FED. AID PROJECT - BRM-7003(876)	
CONTRACT NO: 83763-83806 BRM-7003(876)				

- INDEX OF SHEETS**
- COVER SHEET
 - GENERAL NOTES
 - SUMMARY OF QUANTITIES AND HIGHWAY STANDARDS
 - 5. SCHEDULE OF QUANTITIES
 - EXISTING TYPICAL CROSS SECTIONS
 - 8. PROPOSED TYPICAL CROSS SECTIONS
 - 11. ROADWAY DETAILS
 - 13. EROSION CONTROL PLAN
 - 15. DETOUR PLAN
 - 18. PLAN AND PROFILE - MAINLINE
 - PLAN AND PROFILE - BIKE PATH
 - ALIGNMENT
 - STRIPING PLAN
 - 23. TYPICAL PAVEMENT MARKINGS FOR COUNTY HIGHWAYS
 - 31. BRIDGE PLANS
 - 33. BORINGS
 - 47. MAINLINE STATION CROSS SECTIONS
 - 50. BIKE PATH STATION CROSS SECTIONS

BRIDGE REPLACEMENT AND REHABILITATION PROGRAM

STATE OF ILLINOIS DEPARTMENT OF TRANSPORTATION DIVISION OF HIGHWAYS PLANS FOR PROPOSED

F.A.U. 3706 / C.H. 30 / KELSEY ROAD OVER FLINT CREEK SECTION 00-00068-07-BR PROJECT BRM-7003(876) JOB NO.: C-91-170-00 LAKE COUNTY



HIGHWAY STANDARDS
SEE SHEET 3

UTILITIES

SBC
1200 N. ARLINGTON HEIGHTS ROAD
2ND FLOOR
ARLINGTON HEIGHTS, IL 60004
LEANNE RODGERS
(847) 506-8082

COMCAST
1575 ROHLING ROAD
ROLLING MEADOWS, IL 60008

AT&T LOCAL NETWORK SERVICES
4513 WESTERN AVE.
LISLE, IL 60532

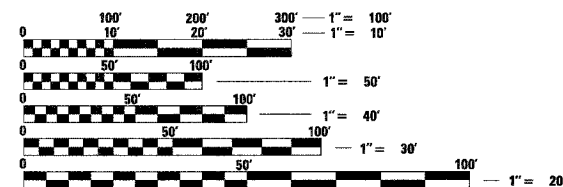
NICOR
1844 FERRY RD
NAPERVILLE, IL 60563-9600

LAKE COUNTY PUBLIC WORKS
650 W. WINCHESTER ROAD
LIBERTYVILLE, IL 60048

DESIGN FUNCTIONAL CLASSIFICATION:
MINOR ARTERIAL URBAN
DESIGN SPEED, 45MPH
DESIGN ADT 15,200 (2025)
DESIGN DESIGNATION: 1783 (25) MINOR ARTERIAL URBAN 0.86 B(20)

SCALES

- PLAN 0" = 20'
- PROFILE HORIZ. 0" = 20'
- PROFILE VERT. 0" = 5'
- CROSS SECTIONS 0" = 5'



FULL SIZE PLANS HAVE BEEN PREPARED USING STANDARD ENGINEERING SCALES. REDUCED SIZED PLANS WILL NOT CONFORM TO STANDARD SCALES. IN MAKING MEASUREMENTS ON REDUCED PLANS, THE ABOVE SCALES MAY BE USED.

J.U.L.I.E.
JOINT UTILITY LOCATION INFORMATION FOR EXCAVATION
1-800-892-0123

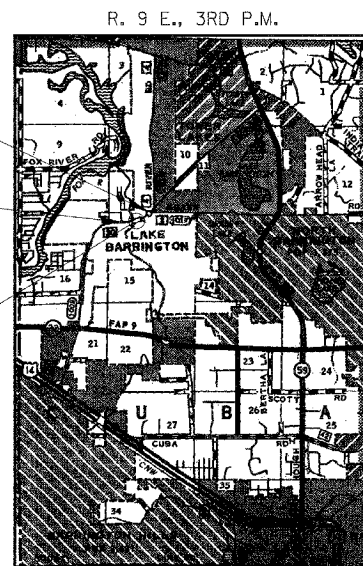


IMPROVEMENT ENDS
STATION 129+00

IMPROVEMENT BEGINS
STATION 119+50

STA. 124+70 - SPECIAL BRIDGE DESIGN
PRECAST PRESTRESSED CONCRETE DECK BEAM
BRIDGE. THREE SPANS @ 39'-0", 45'-3" RDWY.
SKEW = 0°
PROPOSED STRUCTURE NO. 049-3071

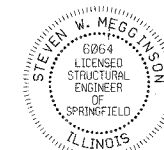
EXISTING STRUCTURE NO. 049-3036



LAYOUT

APPROXIMATE SCALE: 0 1 MILE

GROSS LENGTH = NET LENGTH OF SECTION = 950 FEET = 0.180 MILES



Expires 11-30-06

Steven W. Megginson 5-26-05
ILLINOIS STRUCTURAL NO. 6064

APPROVED May 31 2005
Charles Riddle
COUNTY ENGINEER

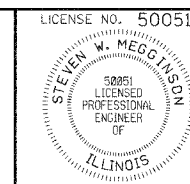
PASSED June 2 2005
Clayton
DISTRICT ENGINEER OF LOCAL ROADS & STREETS

APPROVED June 6 2005
Dina O'Keefe
REGIONAL ENGINEER
STATE OF ILLINOIS
DEPARTMENT OF TRANSPORTATION

DATE: May 26, 2005

BY: Steven W. Megginson

LICENSE EXPIRES: NOVEMBER 30, 2005



Rice, Berry and Associates
A Division of Hampton,
Lenzini and Renwick, Inc.
Civil & Structural Engineers
801 S. Durkin Drive
Springfield, Illinois 62704
217-546-3400

Account Number
12-07-0047-1

P.O. Box 1036
DuQuoin, Illinois 62832
618-790-4637