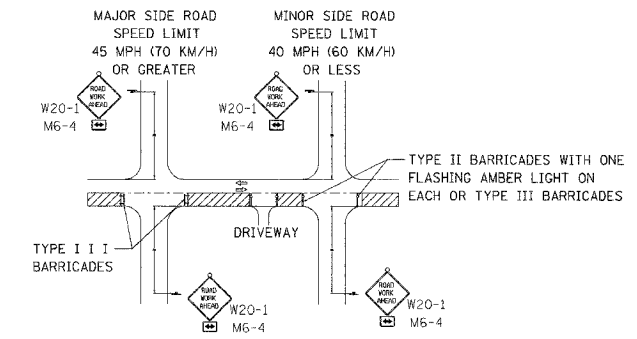


CONTRACT NO. 83806



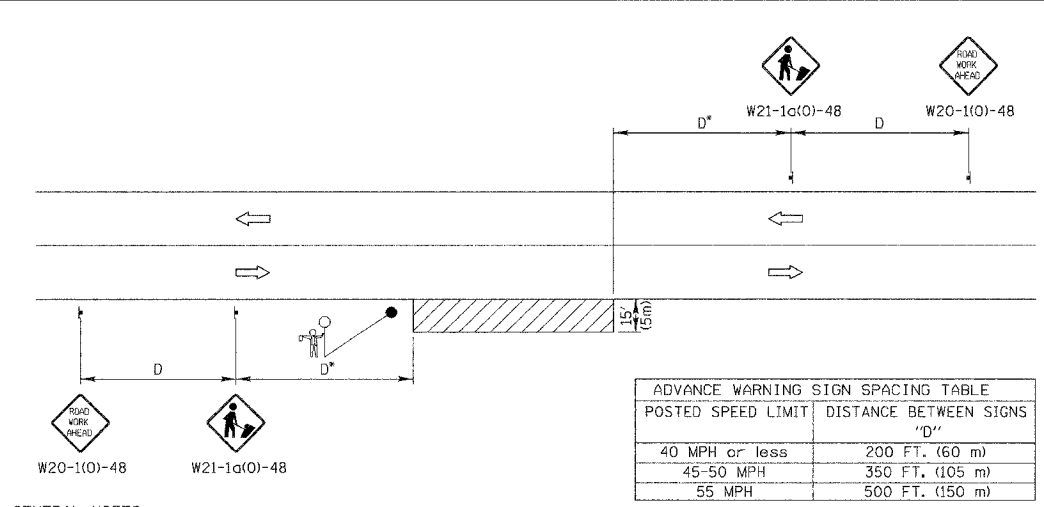
- For a side road with a speed limit of 40 mph (60 km/h) or less, the closed portion of the main route shall be protected by blocking with Type II or Type III barricades, 1/3 of the cross section of the closed portion of the roadway.
- For a side road with a speed limit of 45 mph (70 km/h) or greater, the closed portion of the main route shall be protected by blocking with Type III barricades, 1/2 of the cross section of the closed portion of the roadway.
- All W20-1 "ROADWORK AHEAD" signs shall be 48" x 48" (1.2m x 1.2m) with fluorescent orange reflective sheeting with an amber Type A flashing light mounted on the sign.
- When the side road lies between the beginning of the mainline signing and the work zone, a M6-1 Single Headed Arrow shall be used in lieu of the M6-4 Double Headed Arrow.
- For a lane closure on a side road or driveway, use the applicable portions of the appropriate Highway Standard or Traffic Control Detail. The spacing of the signs and barricades shall be adjusted for field conditions as directed by the engineer. The directional arrow shall be covered or removed when no longer consistent with the side road lane closure.
- Advance warning signs shall be omitted on driveways unless otherwise noted.
- The traffic control and protection for side roads and intersections shall be included in the contract unit lump sum price for "TRAFFIC CONTROL AND PROTECTION."

ADVANCE WARNING SIGN SPACING TABLE	DISTANCE BETWEEN SIGNS (D)
POSTED SPEED	
40 MPH OR LESS	200'
45 MPH OR GREATER	350'
55 MPH	500'

ADVANCE WARNING SIGN SPACING TABLE - METRIC	DISTANCE BETWEEN SIGNS (D)
POSTED SPEED	
60 km/h OR LESS	60m
70-80 km/h	105m
90 km/h	150m

REVISIONS	DATE	REVISIONS	DATE
DUAL DIMENSIONS	03/27/02	REMOVED FLAGS-JPS SPACING REV.-JPS	3/14/97
		REVISED BARRICADES, DIST CHART AND ADDED DETAIL, NO.-JPS	1/23/98
		SCALE, FONT, SIZE -- GNW	3/10/99
			12/14/99

MODIFIED DISTRICT ONE SIDE ROAD DETAIL



ADVANCE WARNING SIGN SPACING TABLE	
POSTED SPEED LIMIT	DISTANCE BETWEEN SIGNS "D"
40 MPH or less	200 FT. (60 m)
45-50 MPH	350 FT. (105 m)
55 MPH	500 FT. (150 m)

GENERAL NOTES
This special detail is used at any time, any vehicle, equipment, workers or their activities require a stationary, intermittent or continuous moving operation within 15 feet (5 m) of the traffic lane, where the average speed is 1 mph (2 km) or less.

*Minimum distance "D" is shown in the Advance Warning Sign Spacing Table. If the work is a moving operation, the maximum distance "D" may be extended to 1/2 the length required for one normal working day's operation or 4 miles (6.4 km), whichever is less.

If the work operation does not exceed 60 minutes, traffic control may be in accordance with I.D.O.T. Highway Standard 701301.

- SYMBOLS
- WORK AREA
 - SIGN ON PORTABLE OR PERMANENT SUPPORT
 - FLAGGER WITH TRAFFIC CONTROL SIGN WHEN REQUIRED

MODIFIED STANDARD 701011

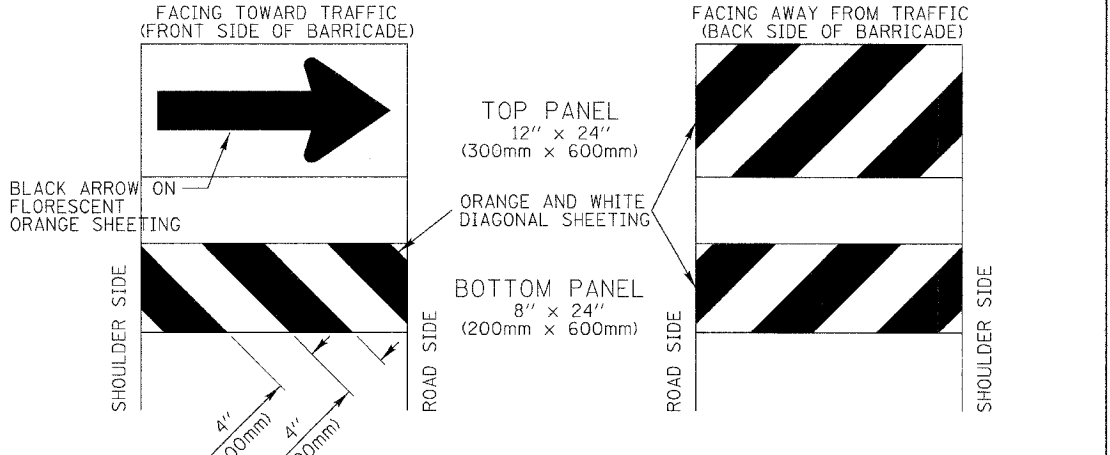
LakeCounty Division of Transportation

APPROVED BY: A. KHAWAJA DATE: 01/20/2003

TYPICAL APPLICATION OF TRAFFIC CONTROL DEVICES HIGHWAY CONSTRUCTION, CONTRACT MAINTENANCE AND UTILITY OPERATIONS

TWO LANE, TWO WAY, OFF-ROAD OPERATIONS DAY ONLY OPERATIONS

DIRECTION INDICATOR BARRICADES



- GENERAL NOTES
- Direction Indicator Barricades shall be constructed from non-metallic Type II barricades meeting the requirements of Article 702.03 (e) of the Standard Specifications.
 - The Direction Indicator Barricades shall be equipped with Type C steady burning lights if used to channelize traffic during the hours of darkness.
 - The reflective sheeting for the top panel shall be Type AZ fluorescent orange. The diagonal panels shall have orange and white Type A or better reflective sheeting.

REVISIONS	DATE	REVISIONS	DATE
DUAL DIMENSIONS	4/25/02		

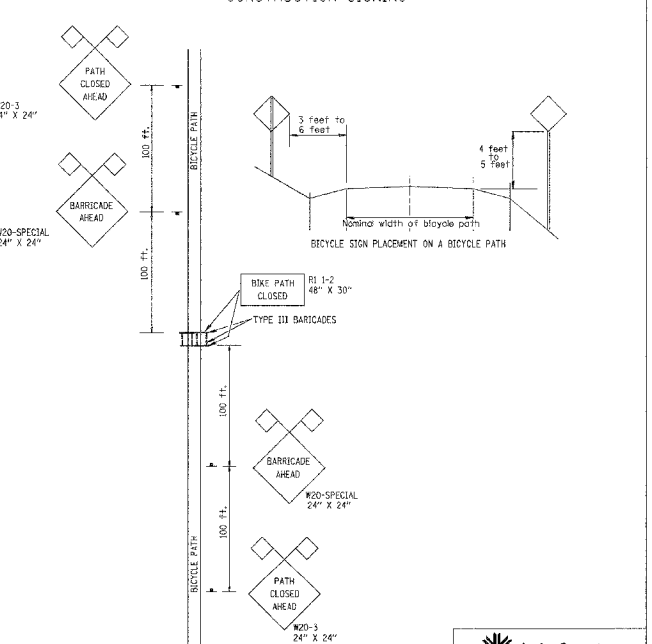
LakeCounty Division of Transportation

APPROVED BY: ANTHONY KHAWAJA DATE: JAN. 27, 2000

TYPICAL APPLICATION OF TRAFFIC CONTROL DEVICES HIGHWAY CONSTRUCTION, CONTRACT MAINTENANCE

DIRECTION INDICATOR BARRICADES

BICYCLE PATH CONSTRUCTION SIGNING



NOTES:

- BICYCLE PATH CONSTRUCTION SIGNS SHALL BE POST MOUNTED IF THE CONSTRUCTION WORK IS TO EXCEED 7000 HOURS CALENDAR DAYS.
- ALL BICYCLE PATH CONSTRUCTION WARNING SIGNS SHALL HAVE BLACK LETTERS ON FLUORESCENT ORANGE BACKGROUNDS AND STANDARD BLACK BORDERS. ALL SIGNS SHALL BE NEW OR LIKE NEW CONDITION.
- THE MINIMUM DIMENSIONS OF THE ORANGE WARNING FLAGS SHOWN IN THIS DETAIL ARE 18" x 18".

LakeCounty Division of Transportation

TRAFFIC CONTROL DETAIL FOR BICYCLE PATH CONSTRUCTION

SCALE: VERT: NONE HORIZ: NONE

DATE: 05/20/05

Rice, Berry and Associates
A Division of Hampton, Lenzini and Renwick, Inc.
Civil & Structural Engineers
801 S. Durkin Drive
Springfield, Illinois 62704
217-546-3400

P.O. Box 1036
DuQuoin, Illinois 62832
618-790-4637

Account Number: 12-07-0047-1
Date: 05/20/05

DESIGNED: T.P.L. CHECKED: S.W.M. DRAWN: W.J.S.

ROADWAY DETAILS
SECTION 00-00068-07-BR
F.A.U. 3706 / C.H. 30 / KELSEY ROAD
LAKE COUNTY