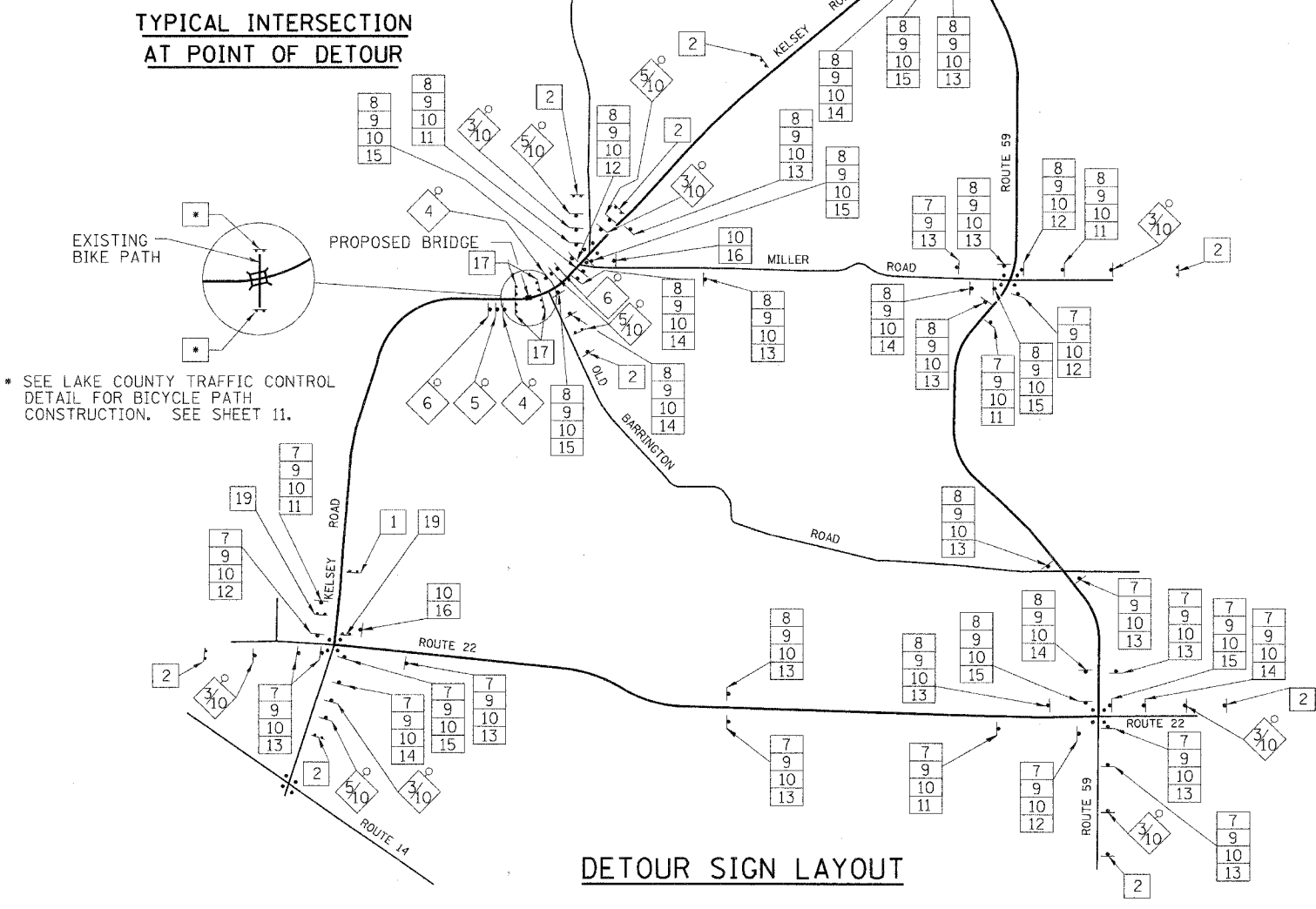
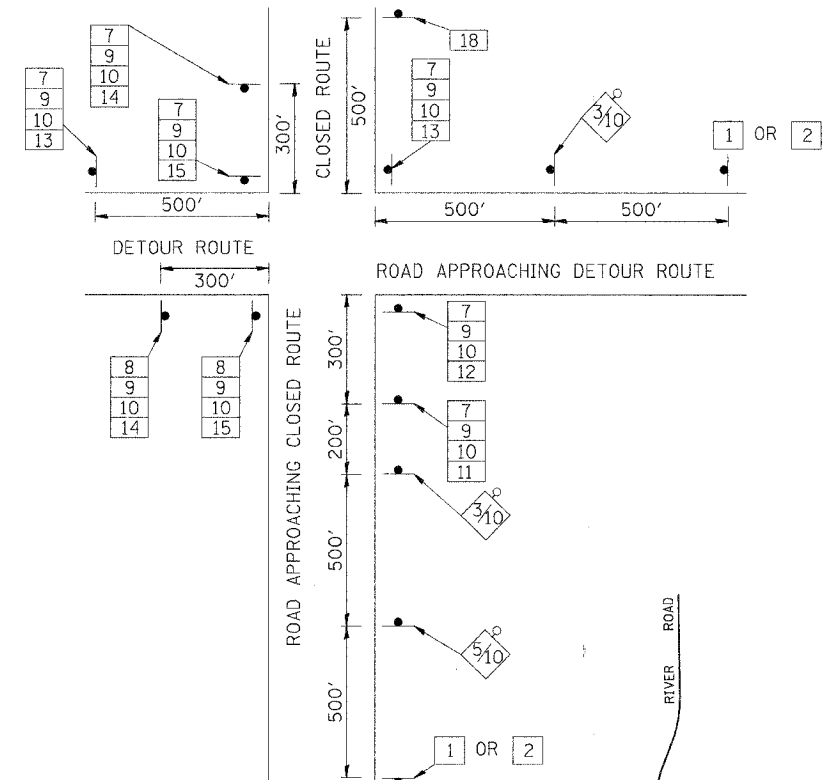


ROUTE NO.	SECTION	COUNTY	SHEET NO.	TOTAL SHEETS
F.A.U. 3706	00-00068-07-BR	LAKE	50	14
FED. ROAD DIST. NO.		ILLINOIS	FED. AID PROJECT- BRM-7003(876)	

CONTRACT NO. 83806



* SEE LAKE COUNTY TRAFFIC CONTROL DETAIL FOR BICYCLE PATH CONSTRUCTION. SEE SHEET 11.

SIGN LEGEND

①		R11-3 WITH 2 AMBER FLASHING LIGHTS. (3 REQ'D)	⑪		M5-1 L (2 REQ'D)
②		R11-3 WITH 2 AMBER FLASHING LIGHTS. (5 REQ'D)	⑫		M6-1 (4 REQ'D)
③		W20-2, 48" x 48" WITH AMBER FLASHING LIGHT AND FLAG. OPTIONAL (TYP). (4 REQ'D)	⑬		M6-3 (10 REQ'D)
④		W20, 48" x 48" WITH AMBER FLASHING LIGHT AND FLAG. (2 REQ'D)	⑭		M5-1 R (3 REQ'D)
⑤		W20-3, 48" x 48" WITH AMBER FLASHING LIGHT AND FLAG. (3 REQ'D)	⑮		M6-1 (4 REQ'D)
⑥		W20-3, 48" x 48" WITH AMBER FLASHING LIGHT AND FLAG. (2 REQ'D)	⑯		M4-8A (2 REQ'D)
⑦		M3-2 (13 REQ'D)	⑰		R11-2 (6 REQ'D)
⑧		M3-4 (12 REQ'D)	⑱		R11-4 (0 REQ'D)
⑨		M4-8 (25 REQ'D)			R11-36 (2 REQ'D)
⑩		M1-I100 (25 REQ'D)			

TYPE III BARRICADES WITH TWO FLASHING LIGHTS EACH AND SIGN.

LEGEND

- DETOUR ROUTE
- ROAD OPEN TO LOCAL TRAFFIC ONLY
- SIGNALIZED INTERSECTION
- ◇ 48" x 48" CONSTRUCTION SIGN, WITH AMBER FLASHING LIGHT NUMBER DENOTES SIGN TYPE
- M4-9 SERIES DETOUR SIGN WITH DIRECTION AND ROAD NAME PLATES NUMBER DENOTES TYPE
- OTHER DETOUR SIGNS, NUMBER DENOTES TYPE

SPECIAL DETOUR NOTES

1. THE CONTRACTOR SHALL PAY PARTICULAR ATTENTION TO THE DETOUR GENERAL NOTES, SEE SHEET 15 FOR THE DETOUR GENERAL NOTES.
2. SEE SHEET 15 FOR INFORMATION ON THE DESIGN AND LOCATION OF THE DETOUR INFORMATION SIGNS.
3. FOUR (4) TYPE III BARRICADES WILL BE NEEDED FOR THIS DETOUR AND ROAD CLOSURE.
4. THE TOTAL LENGTH OF THE DETOUR IS 8 MILES.
5. ALL DETOUR SIGNS, SHALL BE COMPLETELY COVERED AT ALL TIMES THE ROADWAY IS NOT CLOSED TO TRAFFIC.

HLR
 Rice, Berry and Associates
 A Division of Hampton, Lenzini and Renwick, Inc.
 Civil & Structural Engineers
 801 S. Durkin Drive
 Springfield, Illinois 62704
 217-546-3400
 P.O. Box 1036
 DuQuoin, Illinois 62832
 618-790-4637
 Account Number 12-07-0047-1
 Date: 05/23/05
 DESIGNED: S.W.M. | CHECKED: S.W.M. | DRAWN: D.T.M.

DETOUR PLAN
 SECTION 00-00068-07-BR
 F.A.U. 3706 / C.H. 30 / KELSEY ROAD
 LAKE COUNTY