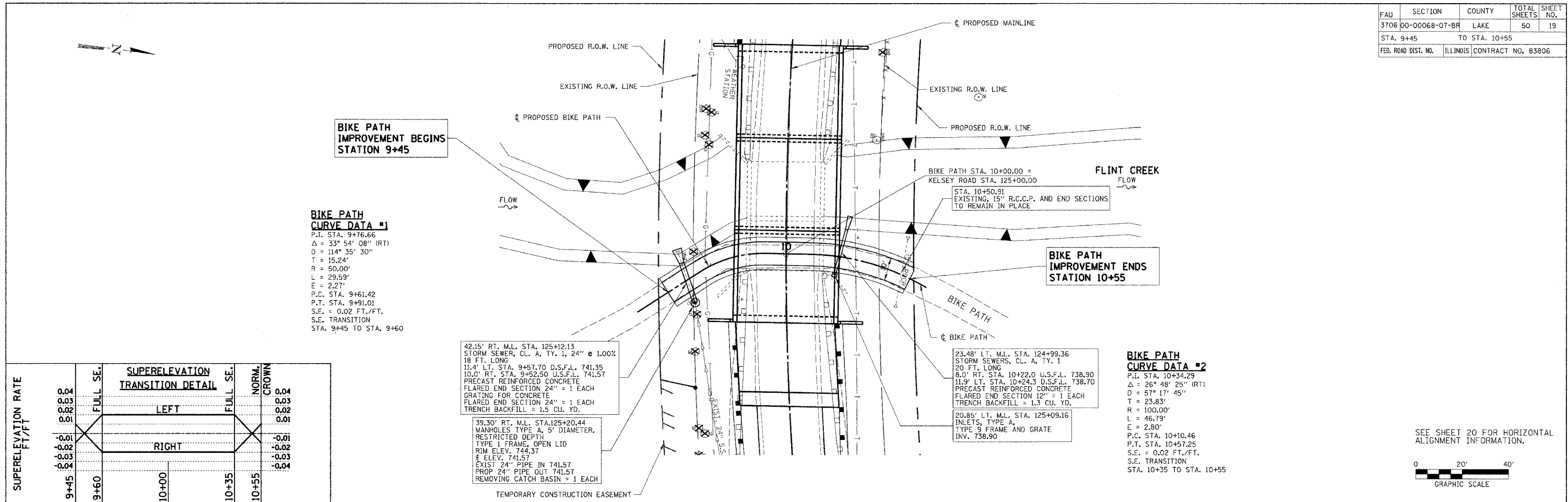


FAU	SECTION	COUNTY	TOTAL SHEETS	SHEET NO.
3706	00-00068-07-BR	LAKE	50	19
STA. 9+45		TO STA. 10+55		
FED. ROAD DIST. NO.		ILLINOIS	CONTRACT NO. 83806	

PLAN	SUBMITTED	DATE
NO. 899852	BY	02/27/02
	IN CHARGE	
	CHECKED	
	DATE	

PROFILE	SUBMITTED	DATE
NO. 899852	BY	
	IN CHARGE	
	CHECKED	
	DATE	



BIKE PATH CURVE DATA #1
 P.I. STA. 9+76.66
 $\Delta = 33^\circ 54' 08''$ (RT)
 $D = 114^\circ 35' 30''$
 $T = 15.24'$
 $R = 50.00'$
 $L = 29.59'$
 $E = 2.27'$
 P.C. STA. 9+61.42
 P.T. STA. 9+91.01
 S.E. = 0.02 FT./FT.
 S.E. TRANSITION
 STA. 9+45 TO STA. 9+60

42.15' RT. M.L. STA. 125+12.13
 STORM SEWER, CL. A, TY. 1, 24" @ 1.00%
 18 FT. LONG
 11.4' LT. STA. 9+57.70 D.S.F.L. 741.35
 10.0' RT. STA. 9+52.50 U.S.F.L. 741.57
 PRECAST REINFORCED CONCRETE
 FLARED END SECTION 24" = 1 EACH
 GRATING FOR CONCRETE
 FLARED END SECTION 24" = 1 EACH
 TRENCH BACKFILL = 1.5 CU. YD.

39.30' RT. M.L. STA. 125+20.44
 MANHOLES TYPE A, 5' DIAMETER,
 RESTRICTED DEPTH
 TYPE 1 FRAME, OPEN LID
 RIM ELEV. 744.37
 4' ELEV. 741.57
 EXIST 24" PIPE IN 741.57
 PROP 24" PIPE OUT 741.57
 REMOVING CATCH BASIN = 1 EACH

23.48' LT. M.L. STA. 124+99.36
 STORM SEWERS, CL. A, TY. 1
 20 FT. LONG
 8.0' RT. STA. 10+22.0 U.S.F.L. 738.90
 11.9' LT. STA. 10+24.3 D.S.F.L. 738.70
 PRECAST REINFORCED CONCRETE
 FLARED END SECTION 12" = 1 EACH
 TRENCH BACKFILL = 1.3 CU. YD.

BIKE PATH CURVE DATA #2
 P.I. STA. 10+34.29
 $\Delta = 26^\circ 48' 25''$ (RT)
 $D = 57^\circ 17' 45''$
 $T = 23.83'$
 $R = 100.00'$
 $L = 46.79'$
 $E = 2.80'$
 P.C. STA. 10+10.46
 P.T. STA. 10+57.25
 S.E. = 0.02 FT./FT.
 S.E. TRANSITION
 STA. 10+35 TO STA. 10+55

SUPERELEVATION RATE FT/FT	SUPERELEVATION TRANSITION DETAIL			NORM. CROWN
	FULL SE.	LEFT	FULL SE.	
0.04				0.04
0.03				0.03
0.02				0.02
0.01				0.01
-0.01				-0.01
-0.02				-0.02
-0.03				-0.03
-0.04				-0.04
	9+45	10+00	10+35	

