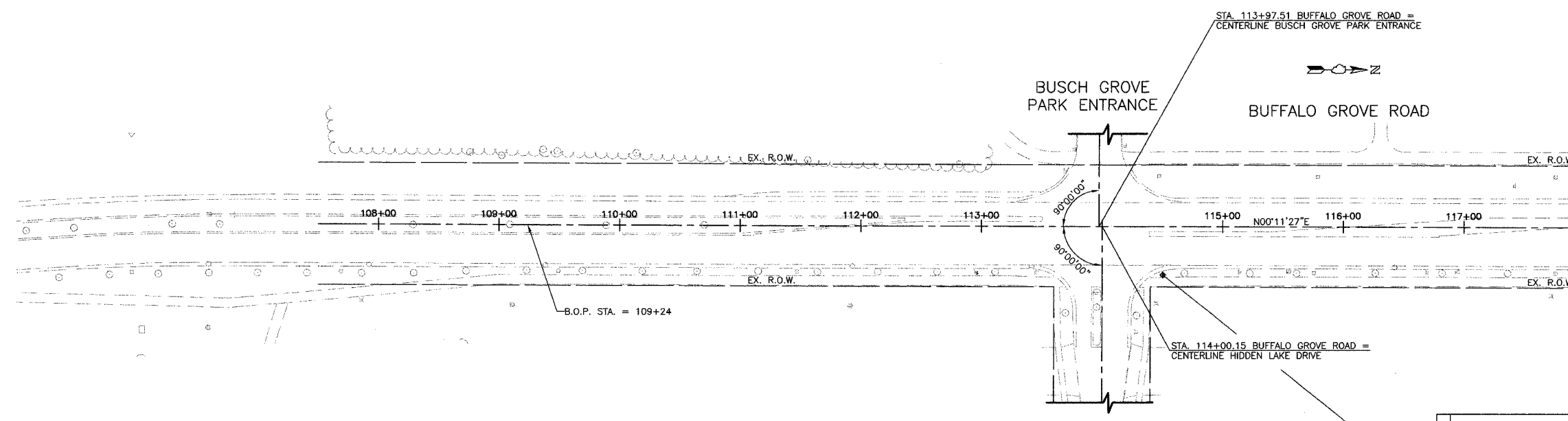


CH	SECTION	COUNTY	TOTAL SHEETS	SHEET NO.
107+50	A47	LAKE	176	23
STA. 107+50		TO STA. 132+50		
03-00088-00-PP		ELABOR		
		SURFACE TRANSPORTATION FUNDING		
CONTRACT NUMBER 83807				



BUFFALO GROVE ROAD
 MATCH LINE STA. 118+00
 (SEE SHEET NO. 21)

BUFFALO GROVE ALIGNMENT DATA

DESCRIPTION	STATION	NORTHING	EASTING
B.O.A.	107+50.00	2004141.67	1084009.74
E.O.A.	132+50.00	2006641.66	1084018.06

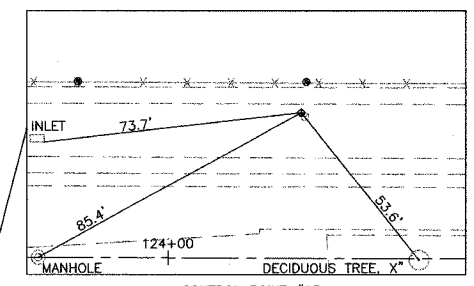
CONTROL POINTS

C.P. #	NORTHING	EASTING	STATION	OFFSET	ELEVATION
15	2006619.41	1084063.25	132+27.90	45.26' RT.	684.35
16	2005829.54	1083974.11	124+37.74	41.25' LT.	682.76
17	2004842.08	1084052.10	114+50.55	40.03' RT.	684.18

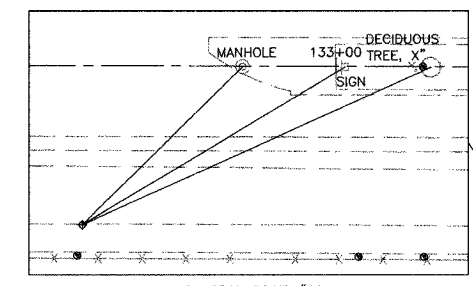
NOTE:
 THREE POINT TIES ARE PROVIDED ONLY TO FIND GENERAL LOCATION OF CONTROL POINT, NOT TO ACCURATELY RECREATE POINT.

BENCH MARKS

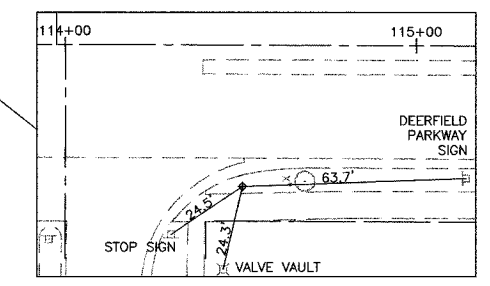
NO.	DESCRIPTION	ELEVATION
B.M. #6	"X" CUT IN WEST-SOUTHWEST FLANGE BOLT ON FIRE HYDRANT ±90' SOUTH OF LARRAWAY DRIVE WEST OF BUFFALO GROVE ROAD	688.77



CONTROL POINT #15
 "X" CUT IN HANDHOLE FRAME
 (NORTH BUFFALO GROVE ROAD AND SOUTH OF LARRAWAY DRIVE)
 STA. 124+37.74, 41.25' LT.

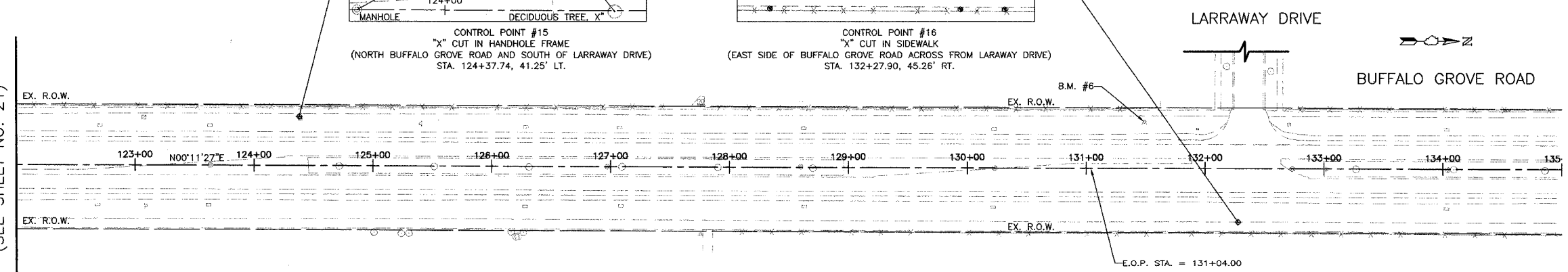


CONTROL POINT #16
 "X" CUT IN SIDEWALK
 (EAST SIDE OF BUFFALO GROVE ROAD ACROSS FROM LARRAWAY DRIVE)
 STA. 132+27.90, 45.26' RT.



CONTROL POINT #17
 REBAR
 (NORTHEAST QUADRANT OF BUFFALO GROVE ROAD AND HIDDEN LAKE DRIVE)
 STA. 114+50.55, 40.03' RT.

BUFFALO GROVE ROAD
 MATCH LINE STA. 122+00
 (SEE SHEET NO. 21)



NOTES:
 EXISTING ROADWAY CONFIGURATION SHOWN
 B.O.A. = BEGINNING OF ALIGNMENT
 B.O.P. = BEGINNING OF PROJECT
 P.C. = POINT OF CURVATURE
 P.C.C. = POINT OF COMMON CURVATURE
 P.T. = POINT OF TANGENT
 P.I. = POINT OF INTERSECTION
 E.O.A. = END OF ALIGNMENT
 E.O.P. = END OF PROJECT
 C.P. = CONTROL POINT
 B.M. = BENCH MARK

REVISIONS	
NAME	DATE

VILLAGE OF BUFFALO GROVE

ALIGNMENT, TIES AND BENCHMARKS
 BUFFALO GROVE ROAD IMPROVEMENT
 STA. 107+50 TO 132+50

DATE: 6/2/2005
 DESIGNED BY: RTM
 TECHNICIAN: JRR
 CHECKED BY: MLH

50 0 50 HORIZ.
 SCALE IN FEET