

FILE #	SECTION	COUNTY	TOTAL SHEETS	SHEET NO.
CH	A47	LAKE	176	30
STA.	57+00	TO STA.	81+00	
03-00088-00-PP	ELIMOS	SURFACE TRANSPORTATION FUNDING		
CONTRACT NUMBER 83807				

PROPOSED HIGHLAND GROVE DRIVE PHASE 1B CONSTRUCTION SEQUENCE:

- PHASE 1B-1: STORM SEWER, PAVEMENT WIDENING & CURB & GUTTER ON WEST SIDE
- PHASE 1B-2: STORM SEWER, PAVEMENT WIDENING & CURB & GUTTER ON EAST SIDE

NOTE: SEE SHEET 38 FOR TYPICAL SECTIONS & CONSTRUCTION SEQUENCE.

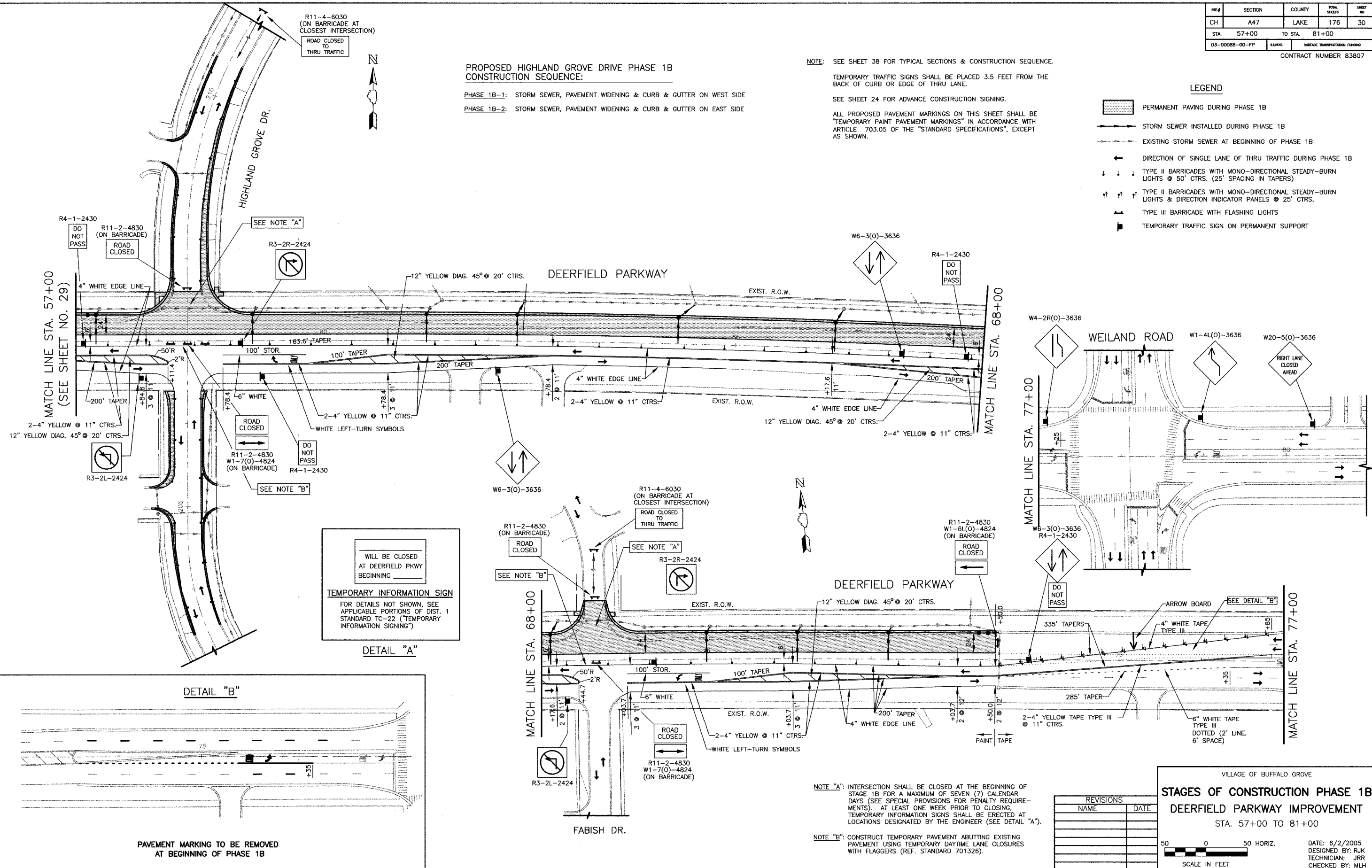
TEMPORARY TRAFFIC SIGNS SHALL BE PLACED 3.5 FEET FROM THE BACK OF CURB OR EDGE OF THRU LANE.

SEE SHEET 24 FOR ADVANCE CONSTRUCTION SIGNING.

ALL PROPOSED PAVEMENT MARKINGS ON THIS SHEET SHALL BE "TEMPORARY PAINT PAVEMENT MARKINGS" IN ACCORDANCE WITH ARTICLE 703.05 OF THE "STANDARD SPECIFICATIONS", EXCEPT AS SHOWN.

LEGEND

- PERMANENT PAVING DURING PHASE 1B
- STORM SEWER INSTALLED DURING PHASE 1B
- EXISTING STORM SEWER AT BEGINNING OF PHASE 1B
- DIRECTION OF SINGLE LANE OF THRU TRAFFIC DURING PHASE 1B
- TYPE II BARRICADES WITH MONO-DIRECTIONAL STEADY-BURN LIGHTS @ 50' CTRS. (25' SPACING IN TAPERS)
- TYPE II BARRICADES WITH MONO-DIRECTIONAL STEADY-BURN LIGHTS & DIRECTION INDICATOR PANELS @ 25' CTRS.
- TYPE III BARRICADE WITH FLASHING LIGHTS
- TEMPORARY TRAFFIC SIGN ON PERMANENT SUPPORT

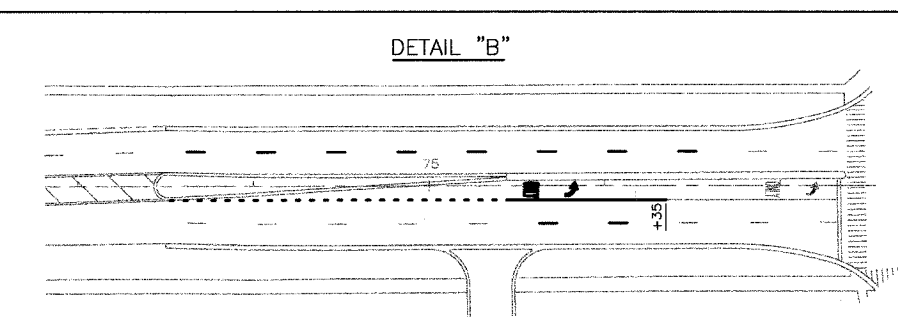


WILL BE CLOSED AT DEERFIELD PKWY BEGINNING

TEMPORARY INFORMATION SIGN

FOR DETAILS NOT SHOWN, SEE APPLICABLE PORTIONS OF DIST. 1 STANDARD TC-22 ("TEMPORARY INFORMATION SIGNING")

DETAIL "A"



PAVEMENT MARKING TO BE REMOVED AT BEGINNING OF PHASE 1B

NOTE "A": INTERSECTION SHALL BE CLOSED AT THE BEGINNING OF STAGE 1B FOR A MAXIMUM OF SEVEN (7) CALENDAR DAYS (SEE SPECIAL PROVISIONS FOR PENALTY REQUIREMENTS). AT LEAST ONE WEEK PRIOR TO CLOSING, TEMPORARY INFORMATION SIGNS SHALL BE ERRECTED AT LOCATIONS DESIGNATED BY THE ENGINEER (SEE DETAIL "A").

NOTE "B": CONSTRUCT TEMPORARY PAVEMENT ABUTTING EXISTING PAVEMENT USING TEMPORARY DAYTIME LANE CLOSURES WITH FLAGGERS (REF. STANDARD 701326).

REVISIONS	
NAME	DATE

VILLAGE OF BUFFALO GROVE

STAGES OF CONSTRUCTION PHASE 1B

DEERFIELD PARKWAY IMPROVEMENT

STA. 57+00 TO 81+00

SCALE IN FEET

DATE: 6/2/2005
DESIGNED BY: RJK
TECHNICIAN: JRR
CHECKED BY: MLH