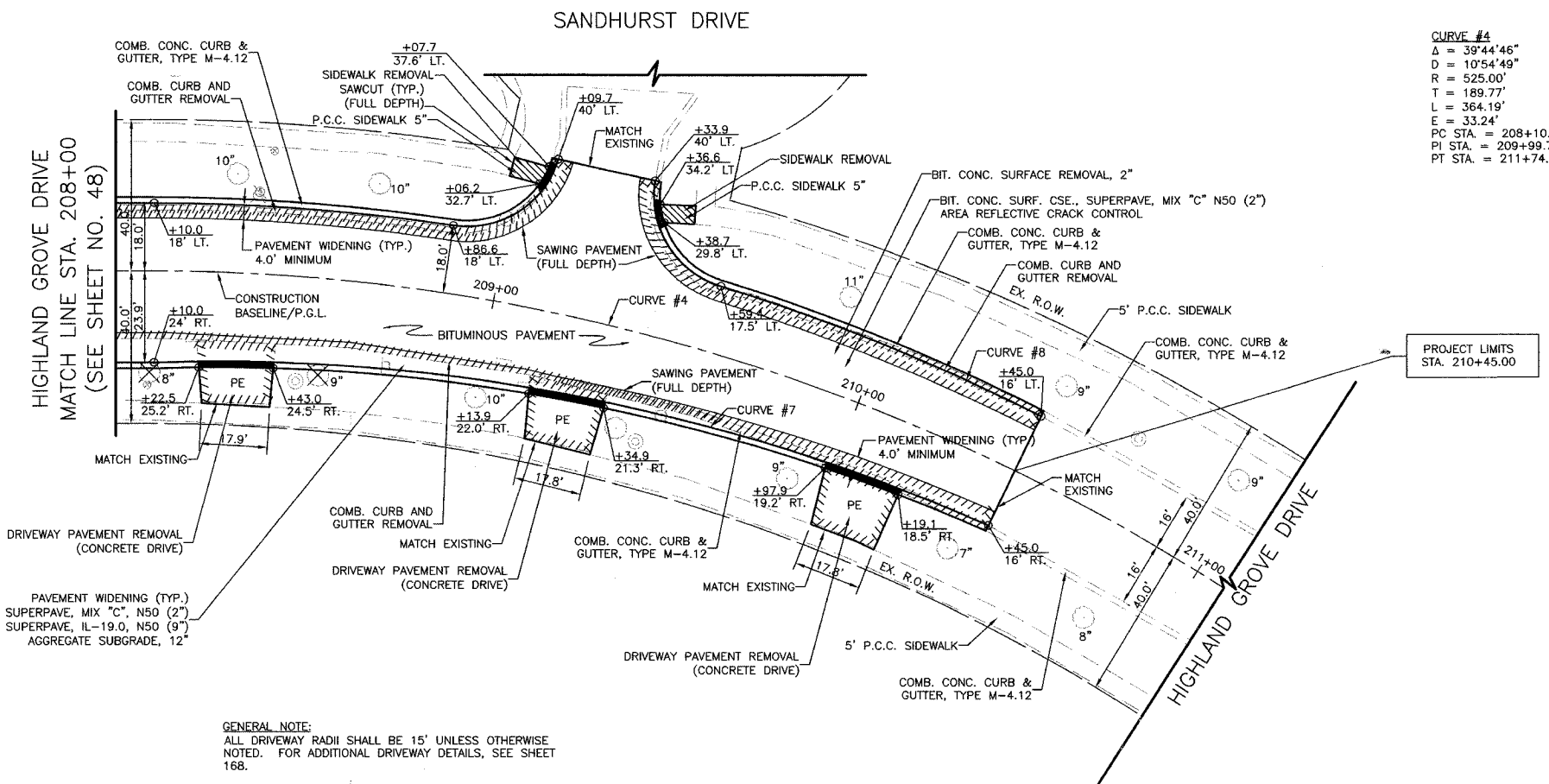


PREP	SECTION	COUNTY	TOTAL SHEETS	SHEET NO
CH	A47	LAKE	176	57
STA.	208+00	TO STA.	211+00	
03-00088-00-PP	LINE	SURFACE TRANSPORTATION FUNDING		
CONTRACT NUMBER 83807				



**CURVE #4**  
 $\Delta = 39^{\circ}44'46''$   
 $D = 10^{\circ}54'49''$   
 $R = 525.00'$   
 $T = 189.77'$   
 $L = 364.19'$   
 $E = 33.24'$   
 PC STA. = 208+10.00  
 PI STA. = 209+99.77  
 PT STA. = 211+74.19

**CURVE #7**  
 $\Delta = 25^{\circ}40'31''$   
 $D = 11^{\circ}21'10''$   
 $R = 504.68'$   
 $T = 115.00'$   
 $L = 226.16'$   
 $E = 12.94'$

**CURVE #8**  
 $\Delta = 09^{\circ}38'20''$   
 $D = 10^{\circ}34'21''$   
 $R = 541.93'$   
 $T = 45.69'$   
 $L = 91.17'$   
 $E = 1.92'$

PAVEMENT WIDENING (TYP.)  
 BIT. CONC. SURF. CSE., SUPERPAVE, MIX "C", N50 (2")  
 BIT. CONC. BIND. CSE., SUPERPAVE, IL-19.0, N50 (9")  
 AGGREGATE SUBGRADE, 12"

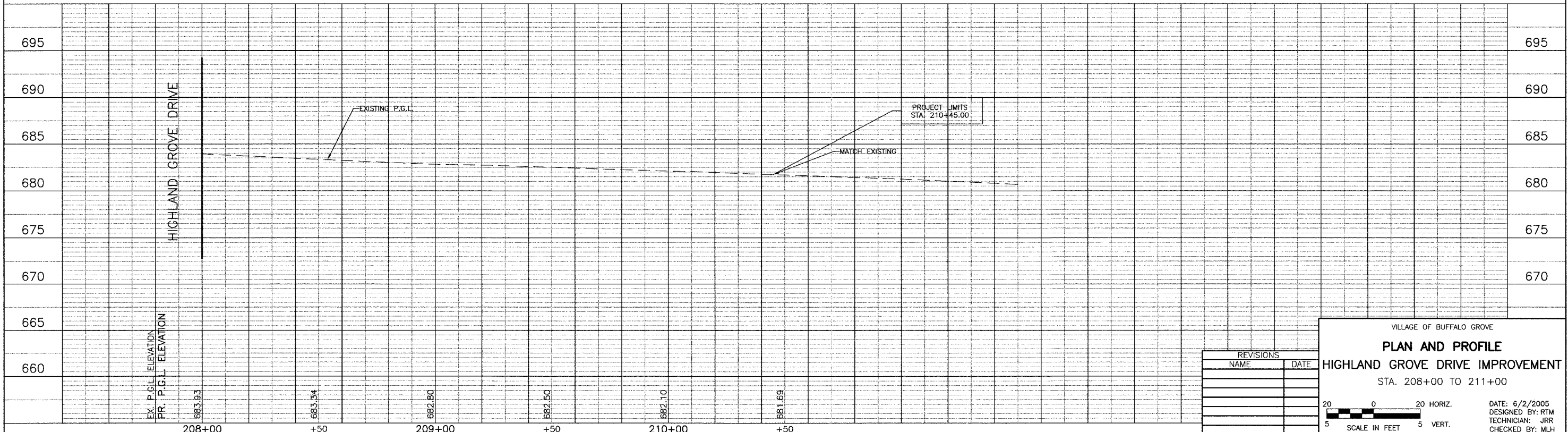
GENERAL NOTE:  
 ALL DRIVEWAY RADII SHALL BE 15' UNLESS OTHERWISE NOTED. FOR ADDITIONAL DRIVEWAY DETAILS, SEE SHEET 168.

LEFT PROPOSED EDGE OF PAVEMENT TABLE

STATION	OFFSET	ELEVATION
208+00	18.0' LT.	683.57
208+50	18.0' LT.	682.98
209+00	22.5' LT.	682.35
209+50	18.6' LT.	682.13
210+00	16.8' LT.	681.76

RIGHT PROPOSED EDGE OF PAVEMENT TABLE

STATION	OFFSET	ELEVATION
208+00	24.0' RT.	683.45
208+50	22.5' RT.	682.89
209+00	20.9' RT.	682.38
209+50	19.3' RT.	682.11
210+00	17.5' RT.	681.75



VILLAGE OF BUFFALO GROVE

**PLAN AND PROFILE**

**HIGHLAND GROVE DRIVE IMPROVEMENT**

STA. 208+00 TO 211+00

REVISIONS	
NAME	DATE

DATE: 6/2/2005  
 DESIGNED BY: RTM  
 TECHNICIAN: JRR  
 CHECKED BY: MLH

20 0 20 HORIZ.  
 5 SCALE IN FEET 5 VERT.

**BID SET**