

BUFFALO GROVE ROAD

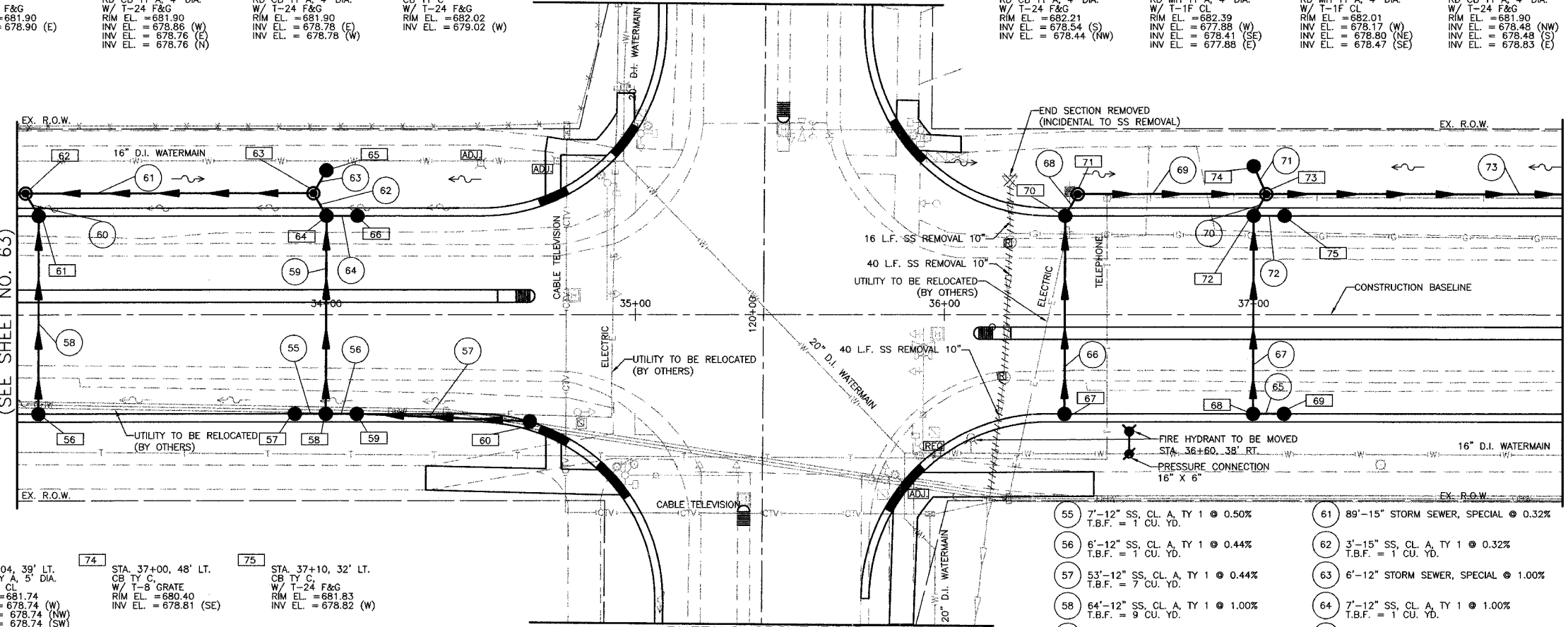
MATCH LINE STA. 121+00 (SEE SHEET NO. 75)

BUFFALO GROVE ROAD

MATCH LINE STA. 119+00 (SEE SHEET NO. 74)

DEERFIELD PARKWAY  
MATCH LINE STA. 33+00  
(SEE SHEET NO. 63)

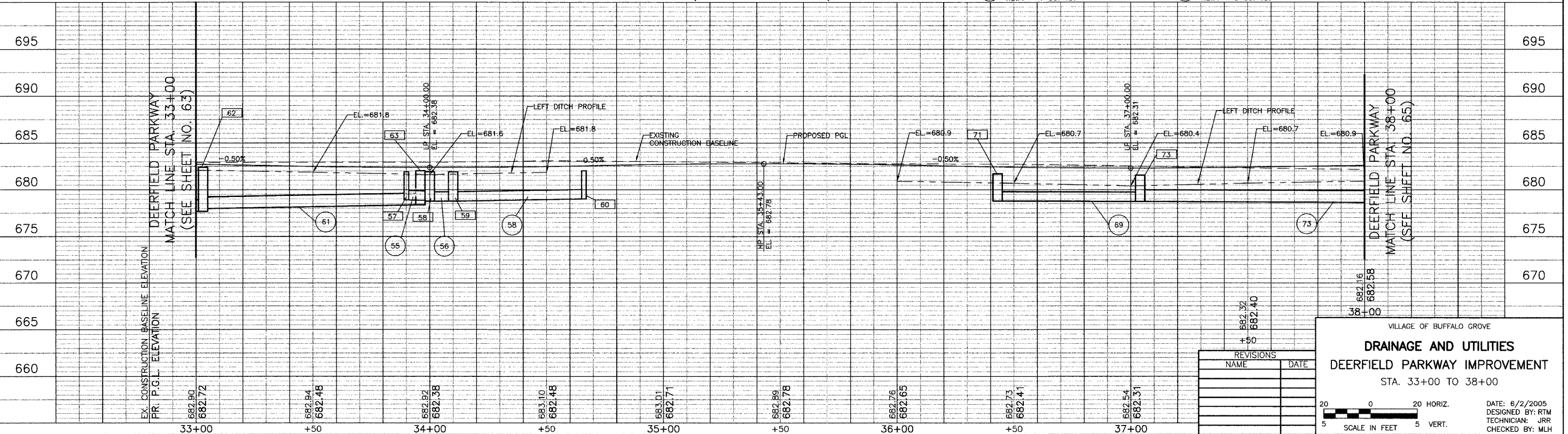
DEERFIELD PARKWAY  
MATCH LINE STA. 38+00  
(SEE SHEET NO. 65)



- 56 STA. 33+07, 32' RT. CB TY C W/ T-24 F&G RIM EL = 682.21 INV EL = 679.18 (N)
- 57 STA. 33+90, 32' RT. CB TY C W/ T-24 F&G RIM EL = 681.90 INV EL = 678.90 (E)
- 58 STA. 34+00, 32' RT. RD CB TY A, 4' DIA. W/ T-24 F&G RIM EL = 681.90 INV EL = 678.86 (W)
- 59 STA. 34+10, 32' RT. RD CB TY A, 4' DIA. W/ T-24 F&G RIM EL = 681.90 INV EL = 678.78 (E)
- 60 STA. 34+66, 34.4' RT. CB TY C W/ T-24 F&G RIM EL = 682.02 INV EL = 679.02 (W)
- 61 STA. 33+07, 32' LT. RD CB TY A, 4' DIA. W/ T-24 F&G RIM EL = 682.21 INV EL = 678.54 (S)
- 62 STA. 33+03, 39' LT. RD MH TY A, 4' DIA. W/ T-1F CL RIM EL = 682.39 INV EL = 677.88 (W)
- 63 STA. 33+96, 39' LT. RD MH TY A, 4' DIA. W/ T-1F CL RIM EL = 682.01 INV EL = 678.17 (W)
- 64 STA. 34+00, 32' LT. RD CB TY A, 4' DIA. W/ T-24 F&G RIM EL = 681.90 INV EL = 678.48 (NW)
- 65 STA. 34+00, 47' LT. CB TY C W/ T-8 GRATE RIM EL = 681.59 INV EL = 678.86 (SW)
- 66 STA. 34+10, 32' LT. CB TY C W/ T-24 F&G RIM EL = 681.90 INV EL = 678.90 (W)
- 67 STA. 36+39, 32' RT. CB TY C W/ T-24 F&G RIM EL = 681.98 INV EL = 679.10 (N)
- 68 STA. 37+00, 32' RT. RD CB TY A, 4' DIA. W/ T-24 F&G RIM EL = 681.83 INV EL = 679.03 (E)
- 69 STA. 37+10, 32' RT. CB TY C W/ T-24 F&G RIM EL = 681.83 INV EL = 679.06 (W)
- 70 STA. 36+39, 32' LT. RD CB TY A, 4' DIA. W/ T-24 F&G RIM EL = 681.98 INV EL = 678.81 (S)
- 71 STA. 36+43, 39' LT. RD MH TY A, 5' DIA. W/ T-1F CL RIM EL = 681.68 INV EL = 678.80 (E)
- 72 STA. 37+00, 32' LT. RD CB TY A, 4' DIA. W/ T-24 F&G RIM EL = 681.83 INV EL = 678.75 (E)
- 73 STA. 37+04, 39' LT. RD MH TY A, 5' DIA. W/ T-1F CL RIM EL = 681.74 INV EL = 678.74 (W)
- 74 STA. 37+00, 48' LT. CB TY C W/ T-8 GRATE RIM EL = 680.40 INV EL = 678.81 (SE)
- 75 STA. 37+10, 32' LT. CB TY C W/ T-24 F&G RIM EL = 681.83 INV EL = 678.82 (W)
- 55 7'-12" SS, CL. A, TY 1 @ 0.50% T.B.F. = 1 CU. YD.
- 56 6'-12" SS, CL. A, TY 1 @ 0.44% T.B.F. = 1 CU. YD.
- 57 53'-12" SS, CL. A, TY 1 @ 0.44% T.B.F. = 7 CU. YD.
- 58 64'-12" SS, CL. A, TY 1 @ 1.00% T.B.F. = 9 CU. YD.
- 59 64'-12" SS, CL. A, TY 1 @ 0.44% T.B.F. = 9 CU. YD.
- 60 3'-12" SS, CL. A, TY 1 @ 1.00% T.B.F. = 1 CU. YD.
- 61 89'-15" STORM SEWER, SPECIAL @ 0.32%
- 62 3'-15" SS, CL. A, TY 1 @ 0.32% T.B.F. = 1 CU. YD.
- 63 6'-12" STORM SEWER, SPECIAL @ 1.00%
- 64 7'-12" SS, CL. A, TY 1 @ 1.00% T.B.F. = 1 CU. YD.
- 65 7'-12" SS, CL. A, TY 1 @ 0.44% T.B.F. = 1 CU. YD.
- 66 64'-12" SS, CL. A, TY 1 @ 0.44% T.B.F. = 9 CU. YD.
- 67 64'-12" SS, CL. A, TY 1 @ 0.44% T.B.F. = 9 CU. YD.
- 68 2'-12" SS, CL. A, TY 1 @ 0.50% T.B.F. = 1 CU. YD.
- 69 57'-SS, TYP 1, REINF. CONC. ELLIPTICAL PIPE, SPAN 45', RISE 29 @ 0.10%
- 70 2'-12" SS, CL. A, TY 1 @ 0.44% T.B.F. = 1 CU. YD.
- 71 7'-12" SS, CL. A, TY 1 @ 1.00% T.B.F. = 1 CU. YD.
- 72 7'-12" SS, CL. A, TY 1 @ 1.00% T.B.F. = 1 CU. YD.
- 73 256'-SS, TYP 1, REINF. CONC. ELLIPTICAL PIPE, SPAN 45', RISE 29 @ 0.10%

ITEM	SECTION	COUNTY	TOTAL SHEETS	SHEET NO
CH	A47	LAKE	176	64

CONTRACT NUMBER 83807



REVISIONS	
NAME	DATE

VILLAGE OF BUFFALO GROVE

**DRAINAGE AND UTILITIES**

DEERFIELD PARKWAY IMPROVEMENT

STA. 33+00 TO 38+00

DATE: 6/2/2005  
DESIGNED BY: RTM  
TECHNICIAN: JRR  
CHECKED BY: MLH

SCALE IN FEET  
20 0 20 HORIZ.  
5 5 VERT.

BID SET