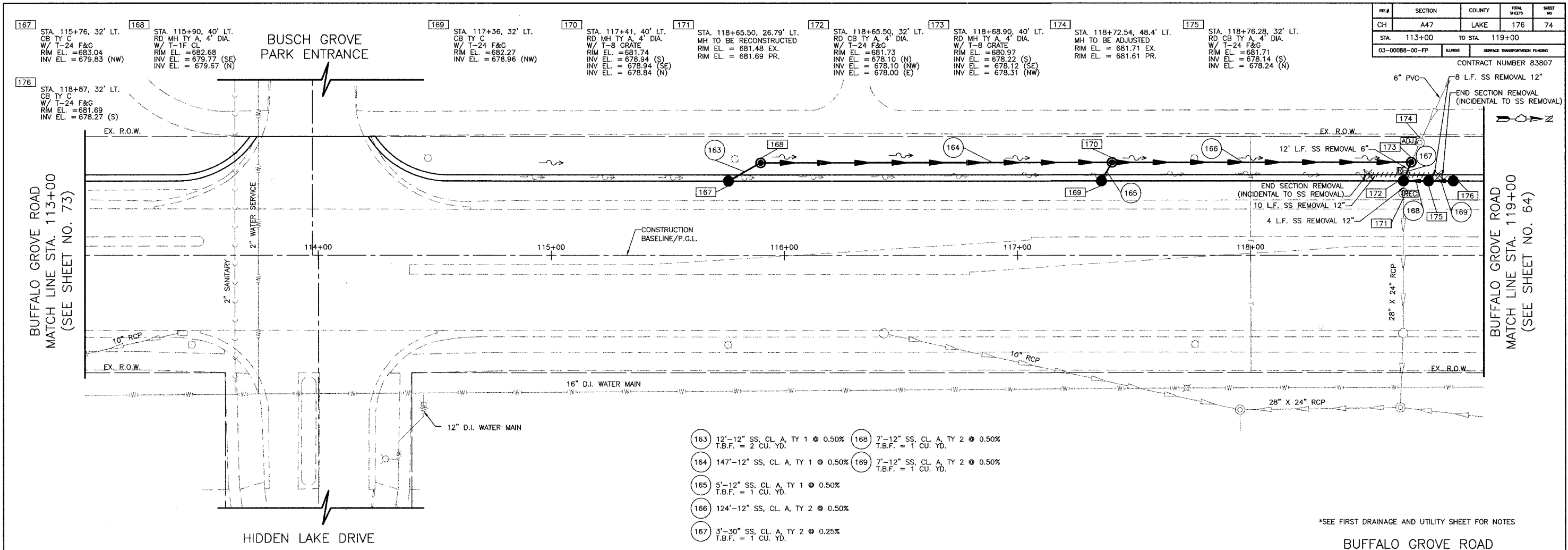


PREP	SECTION	COUNTY	TOTAL SHEETS	SHEET NO.
CH	A47	LAKE	176	74

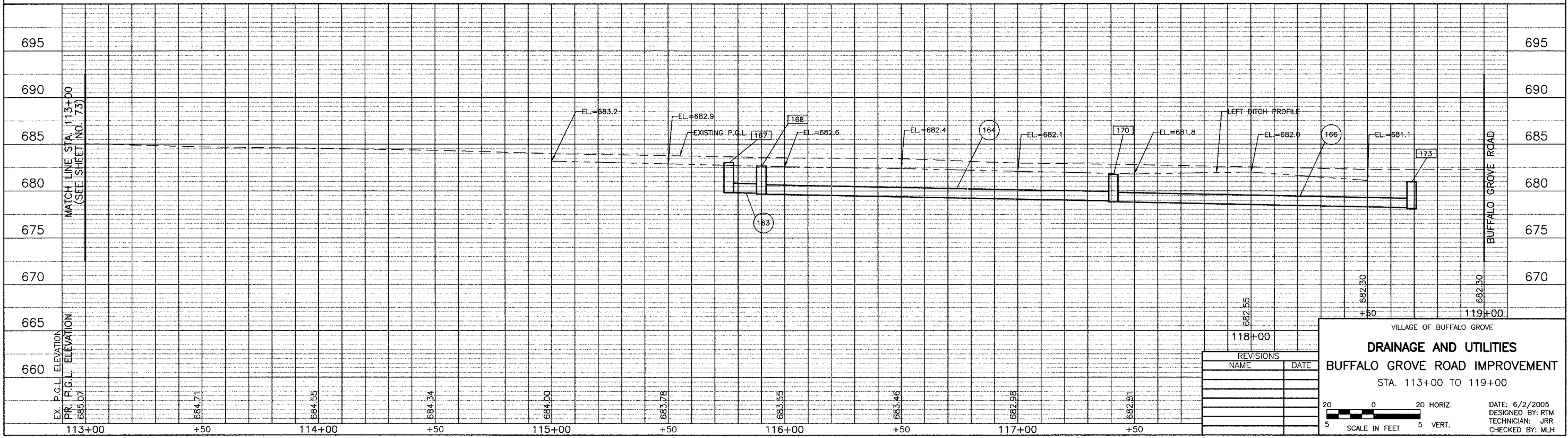
STA. 113+00	TO STA. 119+00
03-00088-00-FP	ELABOR SURFACE TRANSPORTATION FUNDING

CONTRACT NUMBER 83807



- 163 12'-12" SS, CL. A, TY 1 @ 0.50% T.B.F. = 2 CU. YD.
- 164 147'-12" SS, CL. A, TY 1 @ 0.50% T.B.F. = 1 CU. YD.
- 165 5'-12" SS, CL. A, TY 1 @ 0.50% T.B.F. = 1 CU. YD.
- 166 124'-12" SS, CL. A, TY 2 @ 0.50% T.B.F. = 1 CU. YD.
- 167 3'-30" SS, CL. A, TY 2 @ 0.25% T.B.F. = 1 CU. YD.
- 168 7'-12" SS, CL. A, TY 2 @ 0.50% T.B.F. = 1 CU. YD.
- 169 7'-12" SS, CL. A, TY 2 @ 0.50% T.B.F. = 1 CU. YD.

\*SEE FIRST DRAINAGE AND UTILITY SHEET FOR NOTES



REVISIONS	
NAME	DATE

VILLAGE OF BUFFALO GROVE

**DRAINAGE AND UTILITIES**

**BUFFALO GROVE ROAD IMPROVEMENT**

STA. 113+00 TO 119+00

DATE: 6/2/2005  
 DESIGNED BY: RTM  
 TECHNICIAN: JRR  
 CHECKED BY: MLH

20 0 20 HORIZ.  
 5 SCALE IN FEET 5 VERT.

BID SET