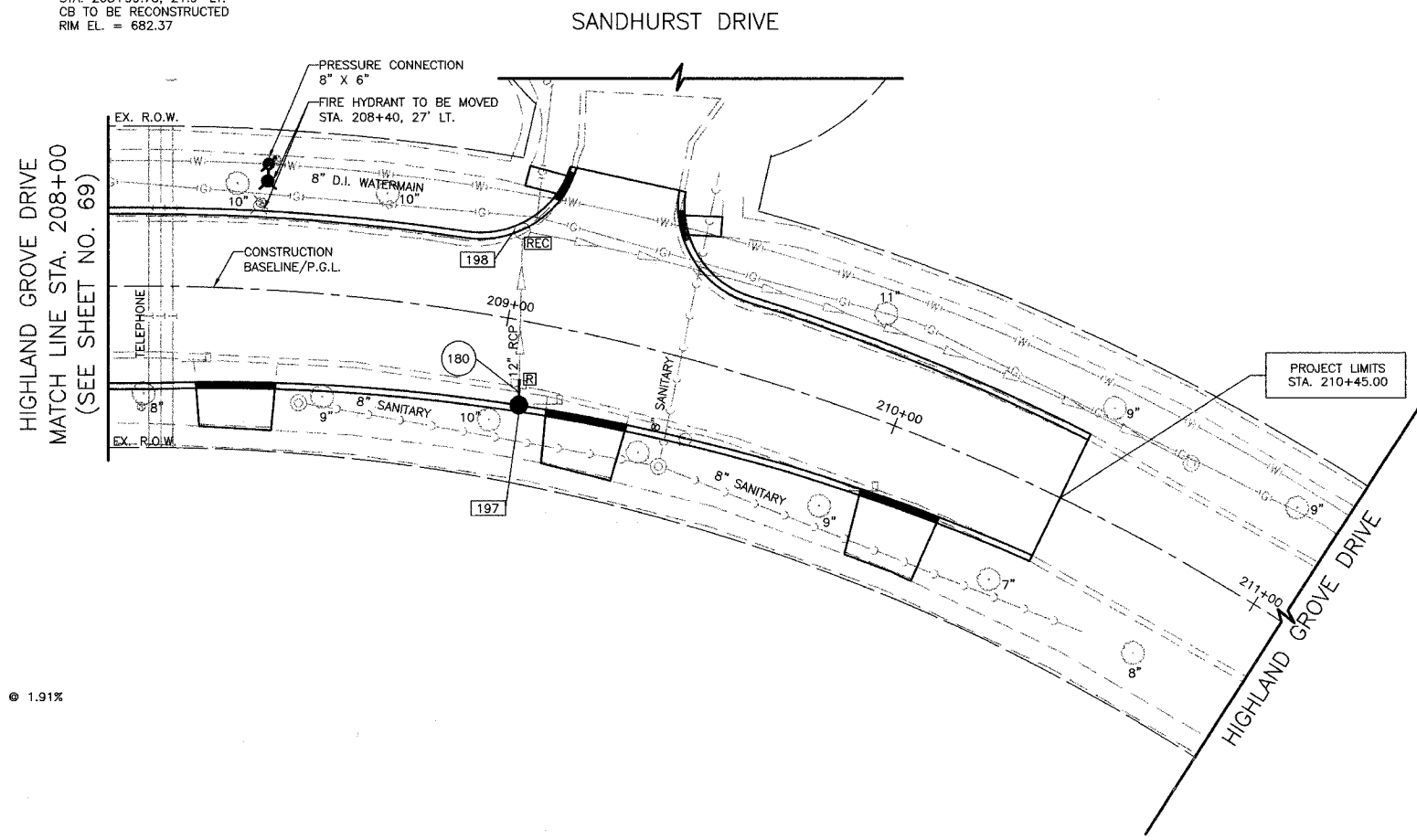


| | | | | |
|-----------------------|---------|--------------------------------|--------------|-----------|
| FILE # | SECTION | COUNTY | TOTAL SHEETS | SHEET NO. |
| CH | A47 | LAKE | 176 | 78 |
| STA. 208+00 | | TO STA. 211+00 | | |
| 03-00088-00-FP | | SURFACE TRANSPORTATION FUNDING | | |
| CONTRACT NUMBER 83807 | | | | |

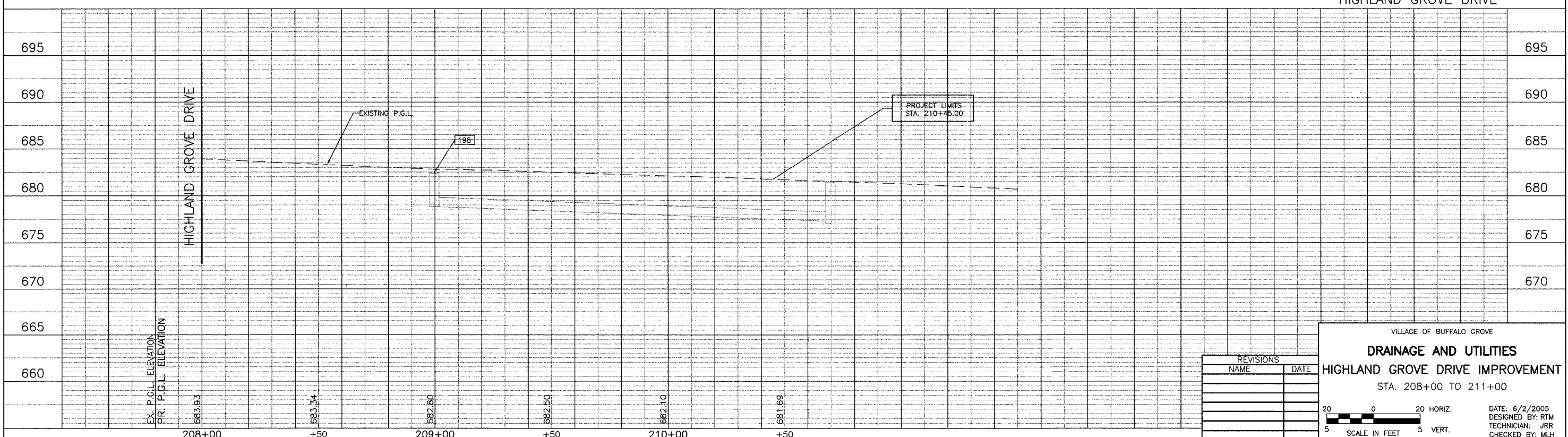
197 STA. 209+06.63, 20.7' RT.
 CB TY C
 W/T-12 F&G
 RIM EL. = 682.36
 INV EL. = 679.62 (W)

198 STA. 208+99.75, 21.9' LT.
 CB TO BE RECONSTRUCTED
 RIM EL. = 682.37



180 7'-12" SS, CL. A, TY 1 @ 1.91%
 T.B.F. = 1 CU. YD.

*SEE FIRST DRAINAGE AND UTILITY SHEET FOR NOTES



| REVISIONS | |
|-----------|------|
| NAME | DATE |
| | |
| | |
| | |
| | |

VILLAGE OF BUFFALO GROVE
DRAINAGE AND UTILITIES
HIGHLAND GROVE DRIVE IMPROVEMENT
 STA. 208+00 TO 211+00

DATE: 6/2/2005
 DESIGNED BY: RTM
 TECHNICIAN: JRR
 CHECKED BY: MLH

20 0 20 HORIZ.
 5 5 VERT.
 SCALE IN FEET

BID SET