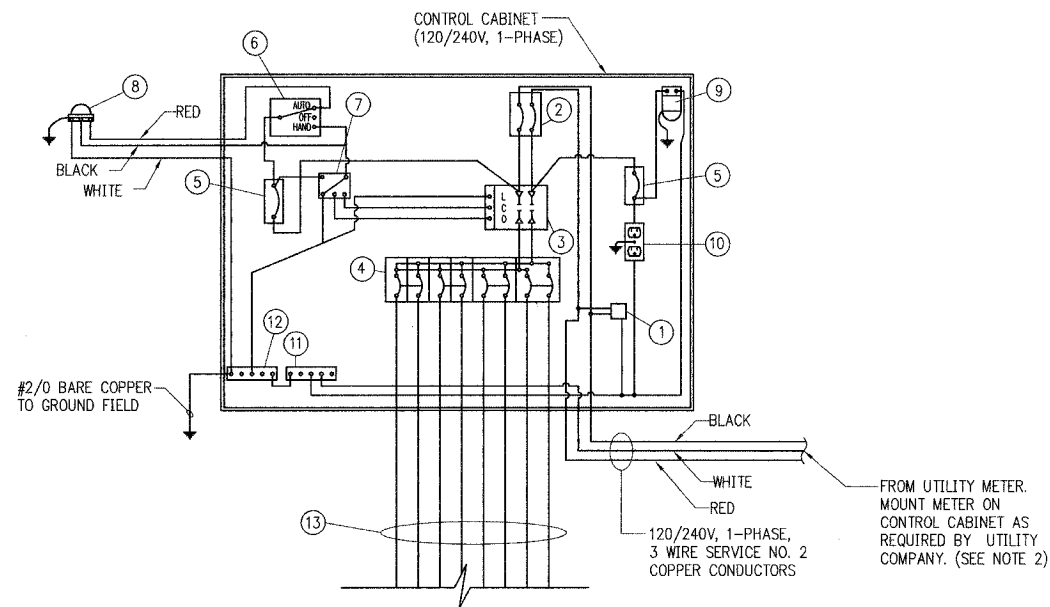


NO. #	SECTION	COUNTY	TOTAL SHEETS	SHEET NO.
CH	A47	LAKE	176	131
STA.	TO STA.			
03-00088-00-FP	ELABOS	SURFACE TRANSPORTATION FUNDING		
CONTRACT NUMBER 83807				

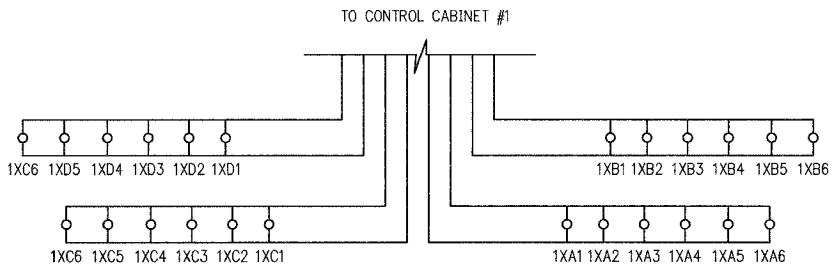


CONTROL CABINET NOMENCLATURE:

- ① 10,000 AMP SURGE ARRESTOR (ELECTRONIC GUARD, EG 240 RC BY INTERMATIC).
- ② 100AMP, 2 POLE MAIN CIRCUIT BREAKER, 240V, 22KAIC (TYPE "TEB" BY GENERAL ELECTRIC OR TYPE "FAL" BY SQUARE D).
- ③ 100AMP, 2 POLE SINGLE THROW, ELECTRICALLY OPERATED, MECHANICALLY HELD CONTACTOR (GENERAL ELECTRIC OR SQUARE D).
- ④ FOUR 40AMP, 2 POLE CIRCUIT BREAKERS, 240V, 22KAIC (TYPE "TEB" BY GENERAL ELECTRIC OR TYPE "FAL" BY SQUARE D).
- ⑤ 15AMP, 1 POLE CIRCUIT BREAKER, 240V, 22KIAC (TYPE "TEB" BY GENERAL ELECTRIC OR EQUAL).
- ⑥ 20AMP, H-O-A SWITCH, 120V MOUNTED ON 4" X 4" BOX.
- ⑦ AUXILIARY CONTROL RELAY WITH CONTACTS RATED FOR CONTACTOR INRUSH CURRENT.
- ⑧ PHOTOCELL WITH 2 MINUTE TIME DELAY. 120V, MOUNTED ON LUMINAIRE CLOSEST TO THE CONTROL CABINET, BY "TORK" OR APPROVED EQUAL. PROVIDE 3#12 THWN, 1#12 GND. TO LIGHT POLE AS REQUIRED.
- ⑨ WATER PROOF INCANDESCENT LIGHTING FIXTURE WITH 120V, 60 WATT BULB AND PULL CHAIN SWITCH.
- ⑩ 15AMP, 120V, DUPLEX GFCI OUTLET.
- ⑪ 1" X 12" NEUTRAL STRIP LABELED "NEUTRAL" AND JOINED TO THE GROUND STRIP WITH A BONDING JUMPER.
- ⑫ 1" X 12" GROUND STRIP LABELED "GROUND" AND PAINTED GREEN.
- ⑬ 1 #8 GROUND WIRE REQUIRED FOR EACH CIRCUIT. GROUND WIRE NOT SHOWN FOR SAKE OF CLARITY.

PROPOSED CONTROL CABINET TYPICAL SCHEMATIC DIAGRAM

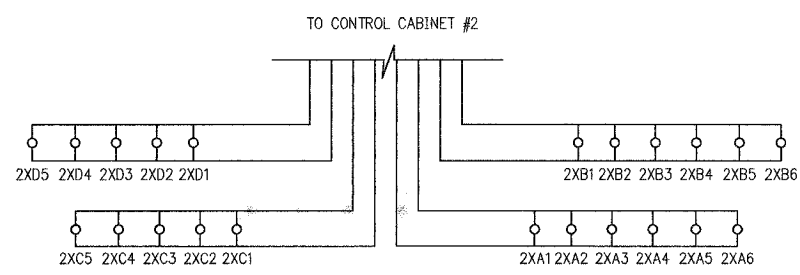
1. THIS DIAGRAM IS GENERAL IN NATURE. THE CONTRACTOR SHALL SUPPLY SHOP DRAWINGS AND CATALOG CUTS FOR THE SPECIFIC EQUIPMENT TO BE USED TO THE VILLAGE FOR THEIR APPROVAL PRIOR TO THE START OF CONSTRUCTION.
2. AVAILABLE SHORT CIRCUIT CURRENT FROM UTILITY - APPROXIMATELY 15,000 KAIC



PROPOSED CONTROL CABINET #1 CIRCUITING

CONTROL CABINET #1 CIRCUIT LOAD TABLE		
CIRCUIT #	TOTAL FIXTURE AMPS	kW LOAD
CCT A	9.6	1.84
CCT B	9.6	1.84
CCT C	9.6	1.84
CCT D	9.6	1.84
TOTAL LOAD:		7.36Kw

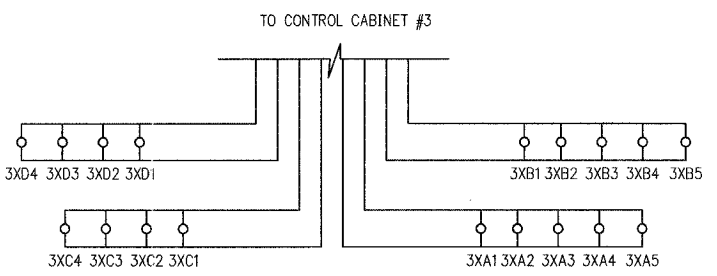
250W LUMINAIRE = 1.6A



PROPOSED CONTROL CABINET #2 CIRCUITING

CONTROL CABINET #2 CIRCUIT LOAD TABLE		
CIRCUIT #	TOTAL FIXTURE AMPS	kW LOAD
CCT A	9.6	1.84
CCT B	9.6	1.84
CCT C	8.0	1.54
CCT D	8.0	1.54
TOTAL LOAD:		6.76Kw

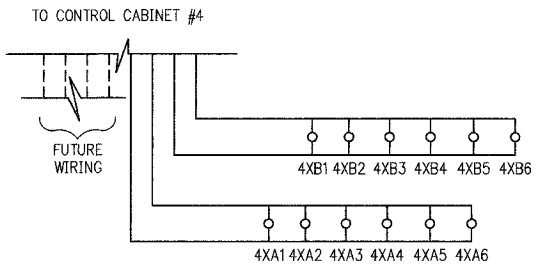
250W LUMINAIRE = 1.6A



PROPOSED CONTROL CABINET #3 CIRCUITING

CONTROL CABINET #3 CIRCUIT LOAD TABLE		
CIRCUIT #	TOTAL FIXTURE AMPS	kW LOAD
CCT A	8.0	1.54
CCT B	8.0	1.54
CCT C	6.4	1.23
CCT D	6.4	1.23
TOTAL LOAD:		5.54Kw

250W LUMINAIRE = 1.6A



PROPOSED CONTROL CABINET #4 CIRCUITING

CONTROL CABINET #4 CIRCUIT LOAD TABLE		
CIRCUIT #	TOTAL FIXTURE AMPS	kW LOAD
CCT A	9.6	1.84
CCT B	9.6	1.84
TOTAL LOAD:		3.68Kw

250W LUMINAIRE = 1.6A

E21 OF E22

VILLAGE OF BUFFALO GROVE
LIGHTING PLANS
ELECTRICAL DETAILS
(3 OF 4)



REVISIONS	
NAME	DATE

DATE: 6/2/2005
DESIGNED BY: CMW
TECHNICIAN: JRH
CHECKED BY: MAR