

# TYPICAL PAVEMENT MARKINGS AND RAISED PAVEMENT MARKERS

ROUTE	SECTION	COUNTY	SHEET	SHEETS
CH	A47	LAKE	176	166
TYPICAL PAVEMENT MARKINGS AND MARKERS				
8/18/07 ILLINOIS				

PAVEMENT MARKING GUIDELINES - ENGLISH MEASUREMENTS

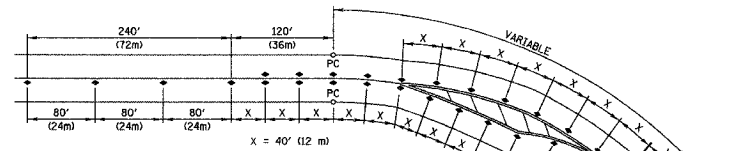
TYPE OF MARKING	WIDTH OF LINE	PATTERN	COLOR	SPACING / REMARKS
CENTERLINE OF 2 LANE PAVEMENT	4 IN.	SKIP-DASH	YELLOW	10 FT. LINE WITH 30 FT. SPACE
NO PASSING ZONE LINES: FOR ONE DIRECTION FOR BOTH DIRECTIONS	4 IN.	SOLID	YELLOW	6 IN. C-C FROM SKIP-DASH CENTERLINE
	2 @ 4 IN.	SOLID	YELLOW	12 IN. C-C (OMIT SKIP-DASH CENTERLINE BETWEEN)
CENTERLINE ON MULTI-LANE UNDIVIDED LANE LINES	2 @ 4 IN.	SOLID	YELLOW	12 IN. C-C
DOTTED LINES (EXTENSIONS OF CENTERLINE OR TURN LANE MARKINGS)	SAME AS LINE BEING EXTENDED	SKIP-DASH	WHITE	10 FT. LINE WITH 30 FT. SPACE
EDGE LINES	5 IN. WHITE 4 IN. YELLOW	SOLID	WHITE - RIGHT YELLOW - LEFT	OUTLINE RAISED MEDIANS IN YELLOW
TURN LANE MARKINGS	6 IN. LINE FULL SIZE LETTERS AND SYMBOLS (8 FT.)	SOLID	WHITE	TURN ARROW 15.6 SQ. FT. STRAIGHT ARROW 11.5 SQ. FT. ONLY 20.8 SQ. FT. COMB. ARROW 26.0 SQ. FT.
TWO WAY LEFT TURN MARKING	2 @ 4 IN. EACH DIRECTION	SKIP-DASH AND SOLID	YELLOW	10 FT. LINE WITH 30 FT. SPACE FOR SKIP-DASH 6 IN. C-C BETWEEN SKIP-DASH LINE AND SOLID LINE
CROSSWALK	12 IN. @ 90°	SOLID	WHITE	12 IN. LONGITUDINAL BAR WITH 24/36 IN. SPACE 6 FT. TO 12 FT. WIDE SEE TYPICAL CROSSWALK MARKING DETAIL
STOP BARS	24 IN.	SOLID	WHITE	PLACE 4 FT. IN ADVANCE OF AND PARALLEL TO CROSSWALK, IF PRESENT, OTHERWISE PLACE AT DESIRED STOPPING POINT.
PAINTED MEDIANS	2 @ 4 IN. WITH 12 IN. DIAGONALS @ 45° NO DIAGONALS USED FOR 4 FT. WIDE MEDIAN	SOLID	YELLOW - 2-WAY TRAFFIC WHITE - 1-WAY TRAFFIC	12 IN. C-C FOR THE DOUBLE LINE SEE TYPICAL PAINTED MEDIAN MARKING DETAIL MINIMUM OF 5 DIAGONALS
GORE MARKING AND CHANNELIZING LINES	8 IN. WITH 12 IN. DIAGONALS @ 45°	SOLID	WHITE	DIAGONALS 15 FT. C-C (LESS THAN 30 MPH) 20 FT. C-C (30 TO 45 MPH) 30 FT. C-C (OVER 45 MPH) MINIMUM OF 5 DIAGONALS
R.R. CROSSING	24 IN. TRANSVERSE LINES RR IS 6 FT. LETTER 16 IN. LINE FOR "X"	SOLID	WHITE	SEE I.D.D.T. STD. 780001 SQUARE METER AREA OF: "R" - 3.6 SQ. FT. / "R" "X" - 54.0 SQ. FT.
SHOULDER DIAGONALS	12 IN. @ 45°	SOLID	WHITE - RIGHT YELLOW - LEFT	50 FT. C-C (LESS THAN 30 MPH) 75 FT. C-C (30 TO 45 MPH) 150 FT. C-C (OVER 45 MPH) MINIMUM OF 5 DIAGONALS

FOR FURTHER DETAILS ON PAVEMENT MARKING REFER TO PART III "MARKINGS" IN THE "ILLINOIS MANUAL ON UNIFORM TRAFFIC CONTROL DEVICES". THE "STANDARD SPECIFICATIONS FOR ROAD AND BRIDGE CONSTRUCTION AND I.D.D.T. HIGHWAY STANDARD 780001 EFFECTIVE JAN. 9, 1998.

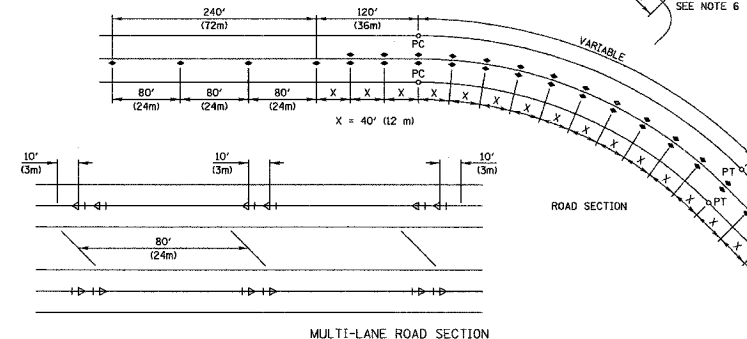
PAVEMENT MARKING GUIDELINES - METRIC MEASUREMENTS

TYPE OF MARKING	WIDTH OF LINE	PATTERN	COLOR	SPACING / REMARKS
CENTERLINE OF 2 LANE PAVEMENT	100 mm	SKIP-DASH	YELLOW	3 m LINE WITH 9 m SPACE
NO PASSING ZONE LINES: FOR ONE DIRECTION FOR BOTH DIRECTIONS	100 mm	SOLID	YELLOW	150 mm C-C FROM SKIP-DASH CENTERLINE
	2 @ 100 mm	SOLID	YELLOW	300 mm C-C (OMIT SKIP-DASH CENTERLINE BETWEEN)
CENTERLINE ON MULTI-LANE UNDIVIDED LANE LINES	2 @ 100 mm	SOLID	YELLOW	300 mm C-C
DOTTED LINES (EXTENSIONS OF CENTERLINE OR TURN LANE MARKINGS)	SAME AS LINE BEING EXTENDED	SKIP-DASH	WHITE	3 m LINE WITH 9 m SPACE
EDGE LINES	125 mm WHITE 100 mm YELLOW	SOLID	WHITE - RIGHT YELLOW - LEFT	OUTLINE RAISED MEDIANS IN YELLOW
TURN LANE MARKINGS	150 mm LINE FULL SIZE LETTERS AND SYMBOLS (2.4 m)	SOLID	WHITE	TURN ARROW 15 SQ. m COMB. ARROW 24 SQ. m STRAIGHT ARROW 15.0 SQ. m ONLY 19 SQ. m
TWO WAY LEFT TURN MARKING	2 @ 100 mm EACH DIRECTION	SKIP-DASH AND SOLID	YELLOW	3 m LINE WITH 9 m SPACE FOR SKIP-DASH 150 mm C-C BETWEEN SKIP-DASH LINE AND SOLID LINE
CROSSWALK	300 mm @ 90°	SOLID	WHITE	300 mm LONGITUDINAL BAR WITH 600/900 mm SPACE, 1.8 m TO 3.6 m WIDE SEE TYPICAL CROSSWALK MARKING DETAIL
STOP BARS	600 mm	SOLID	WHITE	PLACE 12 m IN ADVANCE OF AND PARALLEL TO CROSSWALK, IF PRESENT, OTHERWISE PLACE AT DESIRED STOPPING POINT.
PAINTED MEDIANS	2 @ 100 mm WITH 300 mm DIAGONALS @ 45° NO DIAGONALS USED FOR 12 m WIDE MEDIAN	SOLID	YELLOW - 2-WAY TRAFFIC WHITE - 1-WAY TRAFFIC	300 mm C-C FOR THE DOUBLE LINE SEE TYPICAL PAINTED MEDIAN MARKING DETAIL MINIMUM OF 5 DIAGONALS
GORE MARKING AND CHANNELIZING LINES	200 mm WITH 300 mm DIAGONALS @ 45°	SOLID	WHITE	DIAGONALS 46 m C-C (LESS THAN 30 MPH) 6 m C-C (30 TO 45 MPH) 9 m C-C (OVER 45 MPH) MINIMUM OF 5 DIAGONALS
R.R. CROSSING	400 mm TRANSVERSE LINES RR IS 1.8 m LETTER 400 mm LINE FOR "X"	SOLID	WHITE	SEE I.D.D.T. STD. 780001 SQUARE METER AREA OF: "R" - 0.33 SQ. m / "R" "X" - 5.0 SQ. m
SHOULDER DIAGONALS	300 mm @ 45°	SOLID	WHITE - RIGHT YELLOW - LEFT	15.2 m C-C (LESS THAN 30 MPH) 23.0 m C-C (30 TO 45 MPH) 45.7 m C-C (OVER 45 MPH) MINIMUM OF 5 DIAGONALS

FOR FURTHER DETAILS ON PAVEMENT MARKING REFER TO PART III "MARKINGS" IN THE "ILLINOIS MANUAL ON UNIFORM TRAFFIC CONTROL DEVICES". THE "STANDARD SPECIFICATIONS FOR ROAD AND BRIDGE CONSTRUCTION AND I.D.D.T. HIGHWAY STANDARD 780001 EFFECTIVE JAN. 9, 1998.

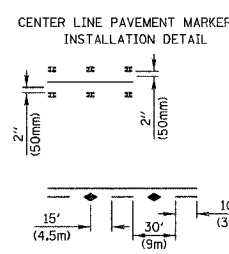


TYPICAL RAISED PAVEMENT MARKER INSTALLATION



MULTI-LANE ROAD SECTION

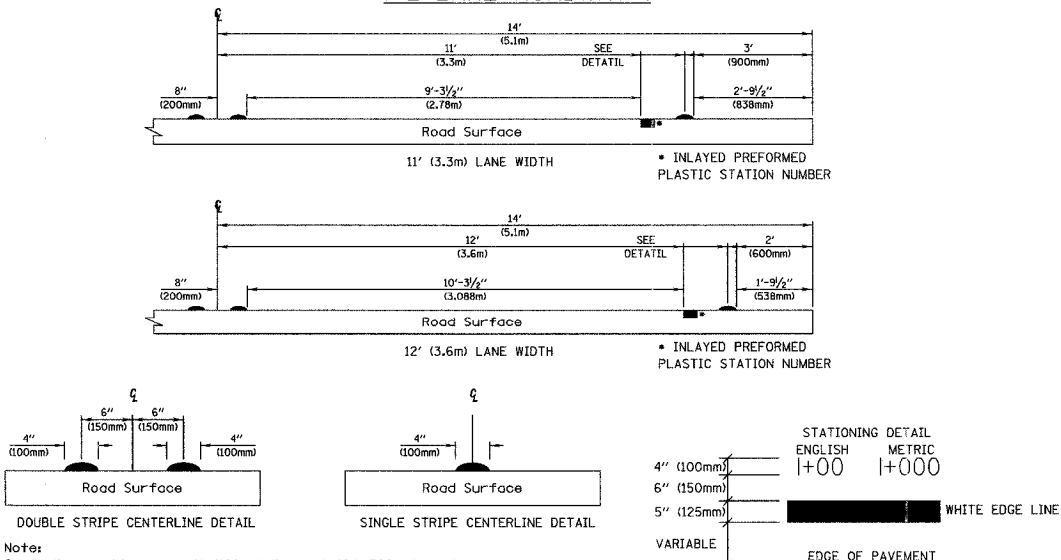
NOTES:  
1. SPACING = 40' (12 m) FOR CENTERLINE MARKERS.  
2. ALL RAISED PAVEMENT MARKERS ON CENTERLINE ARE 2-WAY YELLOW.  
3. LANE LINE MARKERS ARE WHITE/RED.  
4. MARKERS SHALL BE FIELD ADJUSTED TO BE LOCATED IN CENTER OF THE 30' (9 m) GAP OF A 30'/10' (9 m/3 m) SKIP/DASH CENTERLINE.  
5. PAVEMENT MARKERS WHICH ARE TO BE LOCATED WITHIN THE INTERSECTION OF A CROSS STREET, SHALL NOT BE INSTALLED.  
6. A MINIMUM OF 4 WHITE/RED MARKERS SHALL BE INSTALLED ALONG THE TURN LANE LINE.  
7. PAVEMENT MARKER PAIRS ON MULTI-LANE ROAD SECTIONS SHALL BE 80' (24 m) CENTER TO CENTER. SPACING WITHIN EACH PAIR SHALL BE 10', CENTERED WITHIN THE 30' (9m) SKIP.



CENTER LINE PAVEMENT MARKER INSTALLATION DETAIL

PAVEMENT MARKER LEGEND  
■ OR ◆ RAISED PAVEMENT MARKER, DOUBLE YELLOW  
◄ RAISED PAVEMENT MARKER, WHITE AND RED

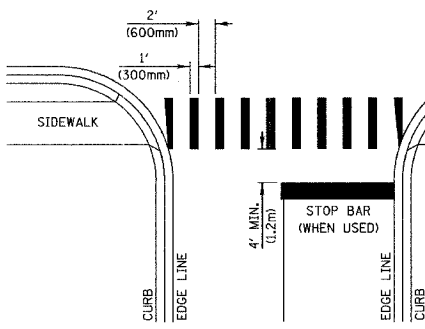
PAVEMENT CROSS SECTION SHOWING TYPICAL PAVEMENT MARKINGS (2-LANE ROADWAY)



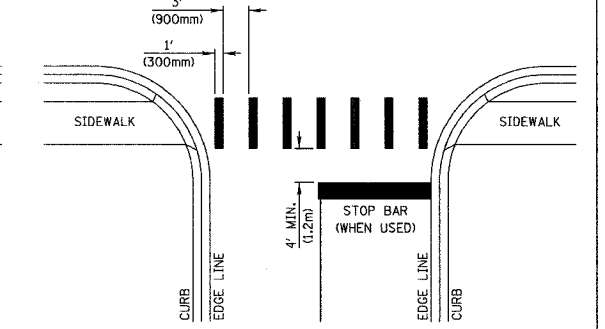
DOUBLE STRIPE CENTERLINE DETAIL  
SINGLE STRIPE CENTERLINE DETAIL  
STATIONING DETAIL  
ENGLISH METRIC  
+00 +000  
4" (100mm)  
6" (150mm)  
5" (125mm)  
VARIABLE  
EDGE OF PAVEMENT

## CROSSWALKS

TYPICAL CROSSWALK INSTALLATION ALL LOCATIONS EXCEPT SIGNALIZED INTERSECTIONS WITH VIDEO DETECTION

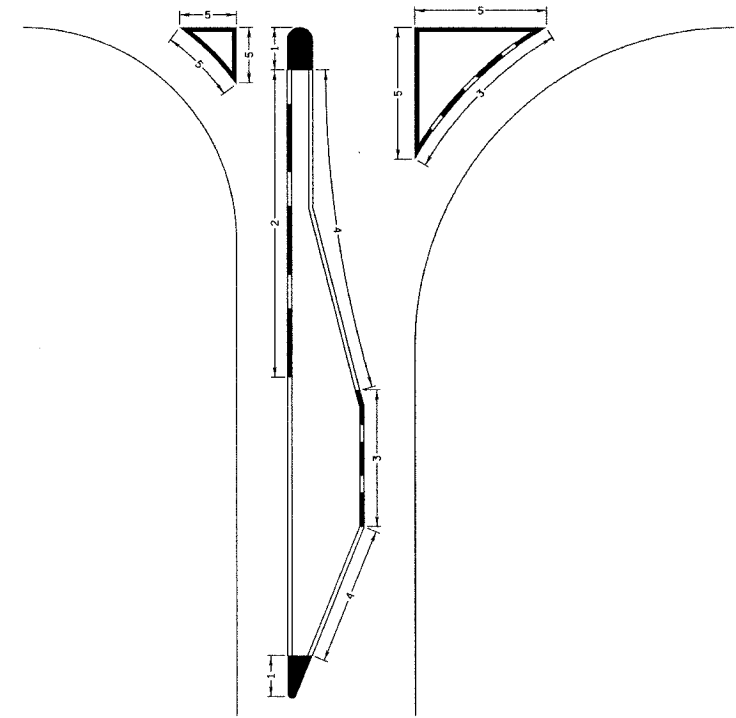


TYPICAL CROSSWALK INSTALLATION FOR SIGNALIZED INTERSECTIONS WITH VIDEO DETECTION



1. WIDTH OF THE CROSSWALK IS GENERALLY 6' (1.8 m) EXCEPT AT SCHOOL CROSSINGS AND BICYCLE CROSSINGS, WHICH CAN BE 8' (2.4 m).
2. THE STOP BAR SHOULD BE INSTALLED A MINIMUM OF 4' (1.2 m) IN ADVANCE OF THE CROSSWALK.

## CURB MARKING



- NOTES:  
1. PAINT CURB AND NOSE SOLID FOR 10' (3m) OR RADIUS OF NOSE, WHICHEVER IS GREATER.  
2. PAINT MINIMUM OF 3 STRIPES IN DIRECTION OF TRAFFIC.  
3. REDUCED SPACING USED TO OBTAIN 3 STRIPE MINIMUM.  
4. STRIPING RECOMMENDED ONLY WHERE OPERATIONAL PROBLEMS DICTATE.  
5. PAINT SOLID WHERE A MINIMUM OF 3 STRIPES CANNOT BE PLACED.
- (CURB MARKINGS SHALL BE PAID FOR AT THE CONTRACT UNIT PRICE PER SQUARE FOOT FOR "PAINT PAVEMENT MARKING, RAISED MEDIAN")

REVISIONS	
NAME	DATE
JOHN SAUTER	7/7/99
JOHN SAUTER	11/01/00

TYPICAL PAVEMENT MARKINGS FOR COUNTY HIGHWAYS

SCALE: NONE SHEET 2 OF 3 DRAWN BY: JPS  
DATE: JAN. 12, 1998 CHECKED BY: ANK