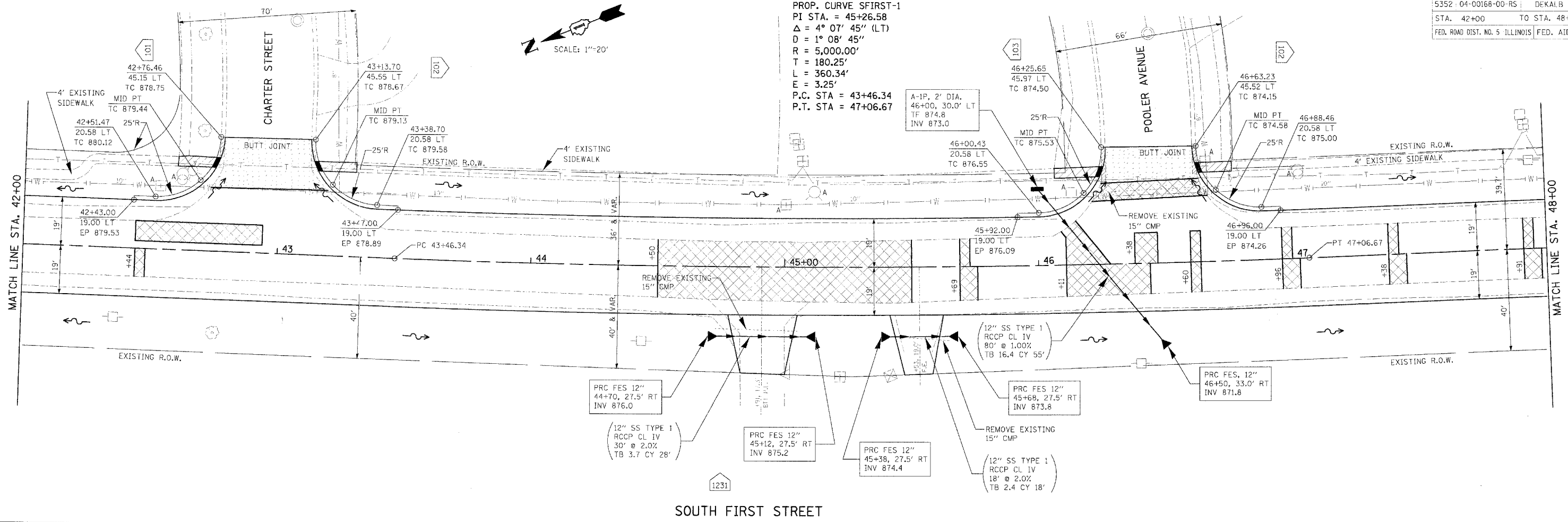
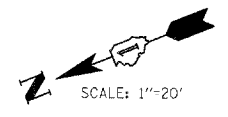
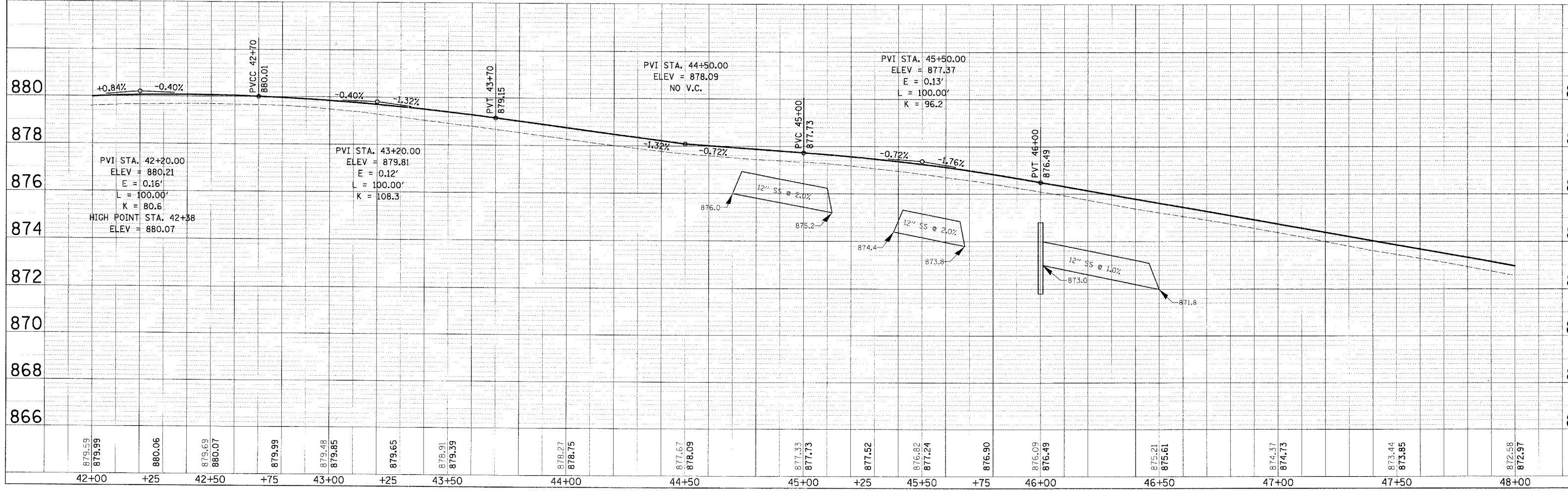


F.A.U. RTE.	SECTION	COUNTY	TOTAL SHEETS
5352	04-00168-00-RS	DEKALB	67
STA. 42+00	TO STA. 48+00		
FED. ROAD DIST. NO. 5 ILLINOIS			FED. AID PROJECT

PROP. CURVE SFIRST-1
 PI STA. = 45+26.58
 $\Delta = 4^\circ 07' 45''$ (LT)
 $D = 1^\circ 08' 45''$
 $R = 5,000.00'$
 $T = 180.25'$
 $L = 360.34'$
 $E = 3.25'$
 P.C. STA = 43+46.34
 P.T. STA = 47+06.67



SOUTH FIRST STREET



DATE	
BY	
DESIGNED	
CHECKED	
IN CHARGE	
PROJECT NO.	
DATE	
BY	
DESIGNED	
CHECKED	
IN CHARGE	
PROJECT NO.	

Small text at the bottom left corner, likely a reference to a drawing standard or software used.