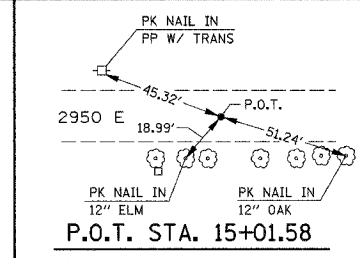
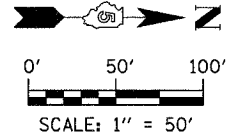


S.E. 1/4, N.W. 1/4, SEC. 24, T. 12 N., R. 5 E., 3rd P.M.



F.A. RTE.	SECTION	COUNTY	TOTAL SHEETS	SHEET NO.
15	99-24115-00-BR	SHELBY	15	5
STA. 5+00 TO STA. 15+00				
FED. ROAD DIST. NO. ILLINOIS FED. AID PROJECT				



LEGEND

- ⊕ INLET AND PIPE PROTECTION
- ⊕ TEMPORARY DITCH CHECK
- PERIMETER EROSION BARRIER
- ⊗ TREE TO BE REMOVED

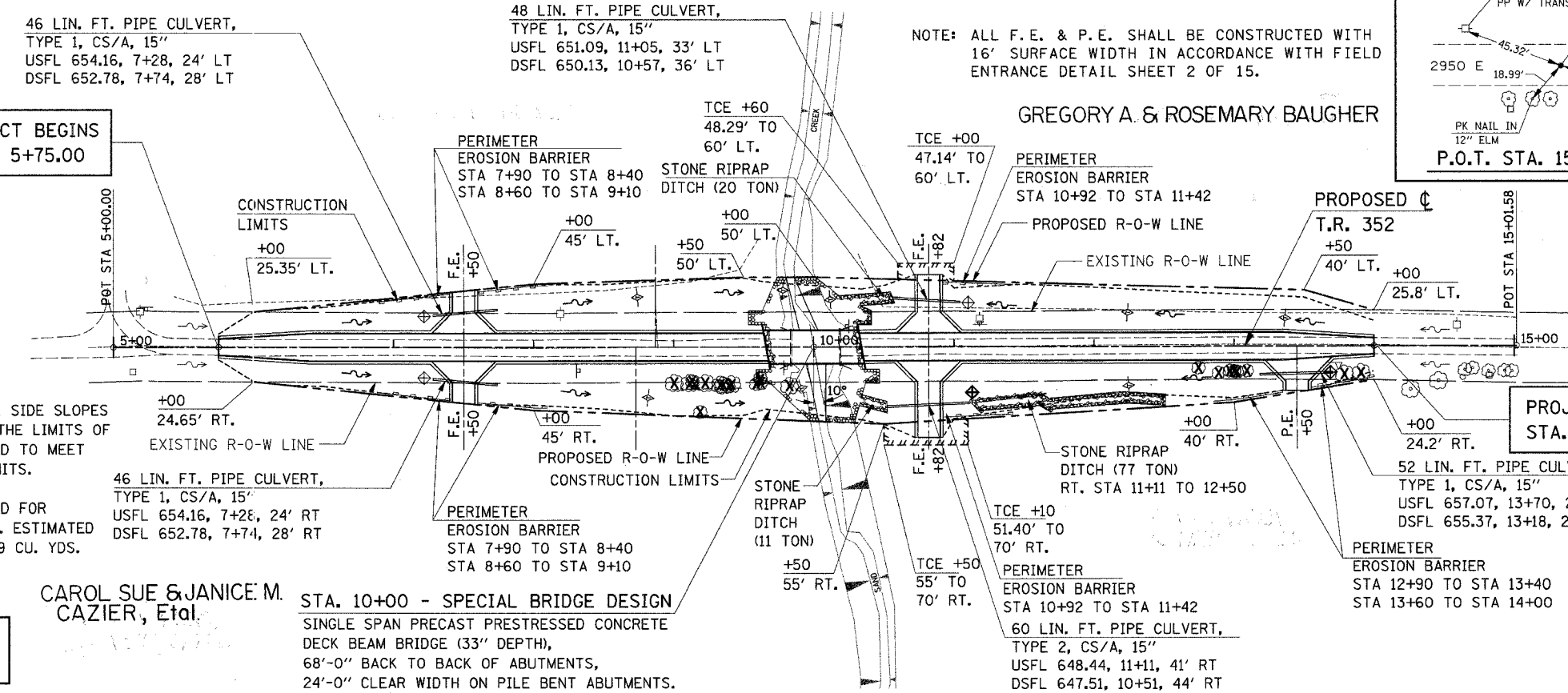
TEMPORARY DITCH CHECK SCHEDULE

STA.	OFFSET
8+75	LT RT
9+75	LT RT
10+90	RT
10+11	LT RT
12+25	LT RT
13+40	LT RT
TOTAL=	8 EACH

TRANSITION FROM PROPOSED ROADWAY SECTION AT STA. 13+34 TO EXISTING ROADWAY SECTION AT STA. 14+00

NOTE: ALL F.E. & P.E. SHALL BE CONSTRUCTED WITH 16' SURFACE WIDTH IN ACCORDANCE WITH FIELD ENTRANCE DETAIL SHEET 2 OF 15.

GREGORY A. & ROSEMARY BAUGHER



CHANNEL EXCAVATION

THE CHANNEL SHALL BE EXCAVATED WITH 2:1 SIDE SLOPES AT RIGHT ANGLES TO THE CHANNEL WITHIN THE LIMITS OF THE PROPOSED STRUCTURE AND TRANSITIONED TO MEET THE EXISTING CHANNEL AT THE "R-O-W" LIMITS. ESTIMATED QUANTITY = 318 CU. YDS. SUITABLE EXCAVATED MATERIAL MAY BE USED FOR EMBANKMENT AS DIRECTED BY THE ENGINEER. ESTIMATED QUANTITY AVAILABLE FOR EMBANKMENT = 159 CU. YDS.

CAROL SUE & JANICE M. CAZIER, Etal.

STA. 10+00 - SPECIAL BRIDGE DESIGN
SINGLE SPAN PRECAST PRESTRESSED CONCRETE DECK BEAM BRIDGE (33" DEPTH), 68'-0" BACK TO BACK OF ABUTMENTS, 24'-0" CLEAR WIDTH ON PILE BENT ABUTMENTS. SKEW = 10° RT. FWD.

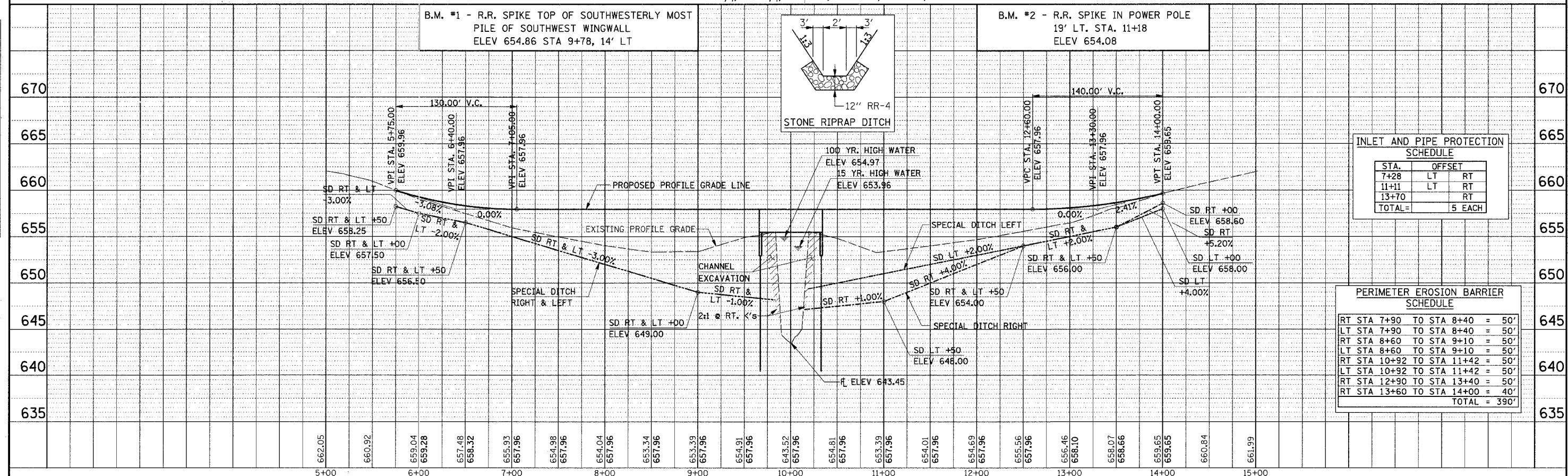
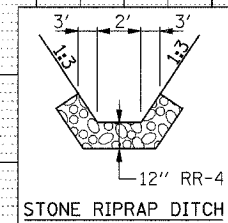
TRANSITION FROM EXISTING ROADWAY SECTION AT STA. 5+75 TO PROPOSED ROADWAY SECTION AT STA. 6+42

S.W. 1/4, N.E. 1/4, SEC. 24, T. 12 N., R. 5 E., 3rd P.M.

FOR TREE REMOVAL SCHEDULES, SEE SHEET 2 OF 15.

B.M. #1 - R.R. SPIKE TOP OF SOUTHWESTERLY MOST PILE OF SOUTHWEST WINGWALL
ELEV 654.86 STA 9+78, 14' LT

B.M. #2 - R.R. SPIKE IN POWER POLE
19' LT. STA. 11+18
ELEV 654.08



INLET AND PIPE PROTECTION SCHEDULE

STA.	OFFSET
7+28	LT RT
11+11	LT RT
13+70	RT
TOTAL=	5 EACH

PERIMETER EROSION BARRIER SCHEDULE

RT STA 7+90 TO STA 8+40	= 50'
LT STA 7+90 TO STA 8+40	= 50'
RT STA 8+60 TO STA 9+10	= 50'
LT STA 8+60 TO STA 9+10	= 50'
RT STA 10+92 TO STA 11+42	= 50'
LT STA 10+92 TO STA 11+42	= 50'
RT STA 12+90 TO STA 13+40	= 50'
RT STA 13+60 TO STA 14+00	= 40'
TOTAL	= 390'

PLAN & PROFILE T.R. 352 - STA. 5+00 TO STA. 15+00